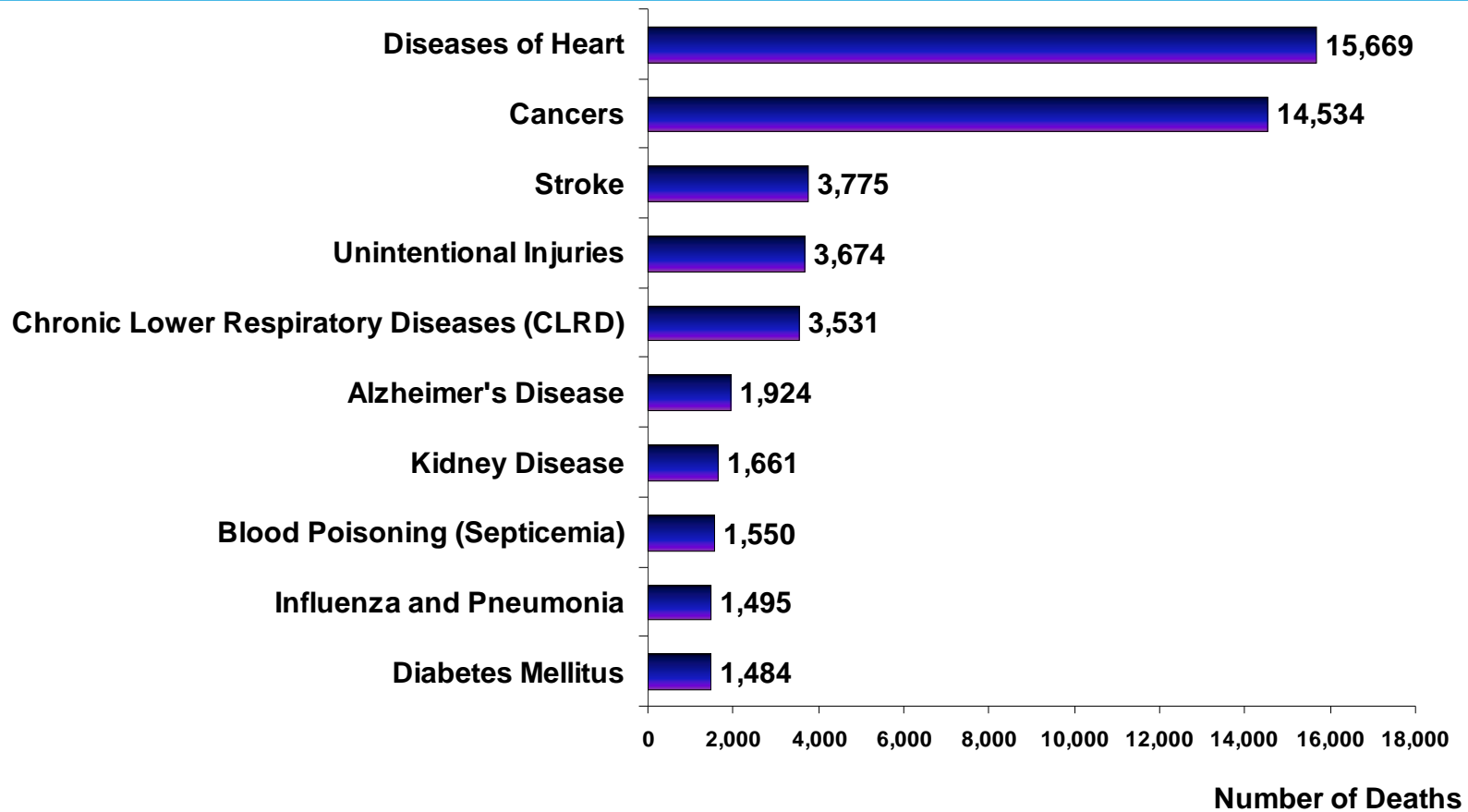


Georgia Annual Health Status Measures 2010



with time-series comparisons to the U.S. and Healthy
People 2000 & 2010 objectives

Leading Causes of Death*, Georgia, 2008

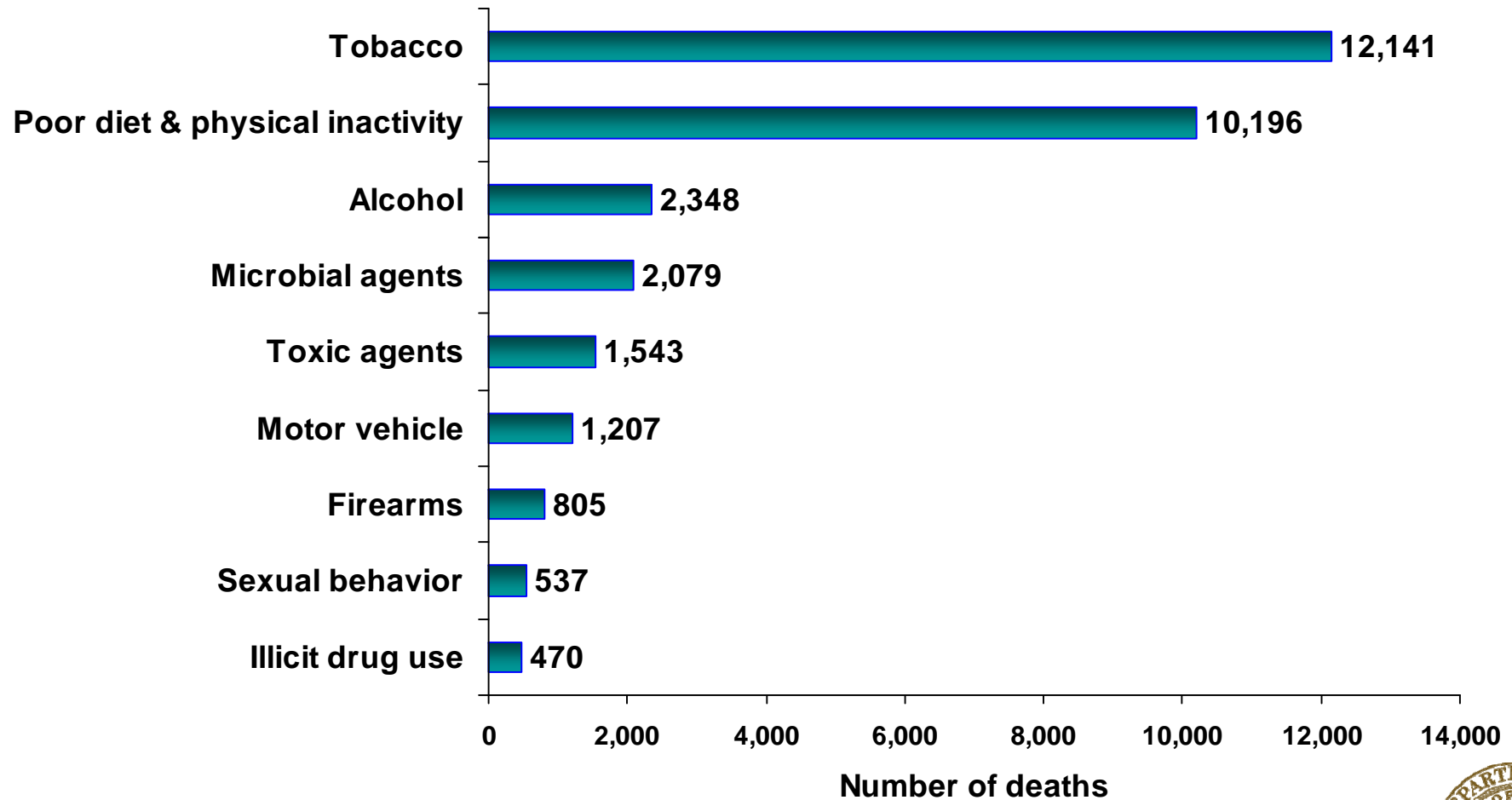


* Method used is the National Centers for Health Statistics (NCHS), rankable causes of deaths applied to Georgia.

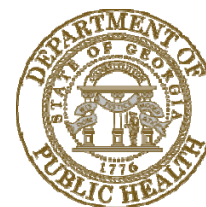
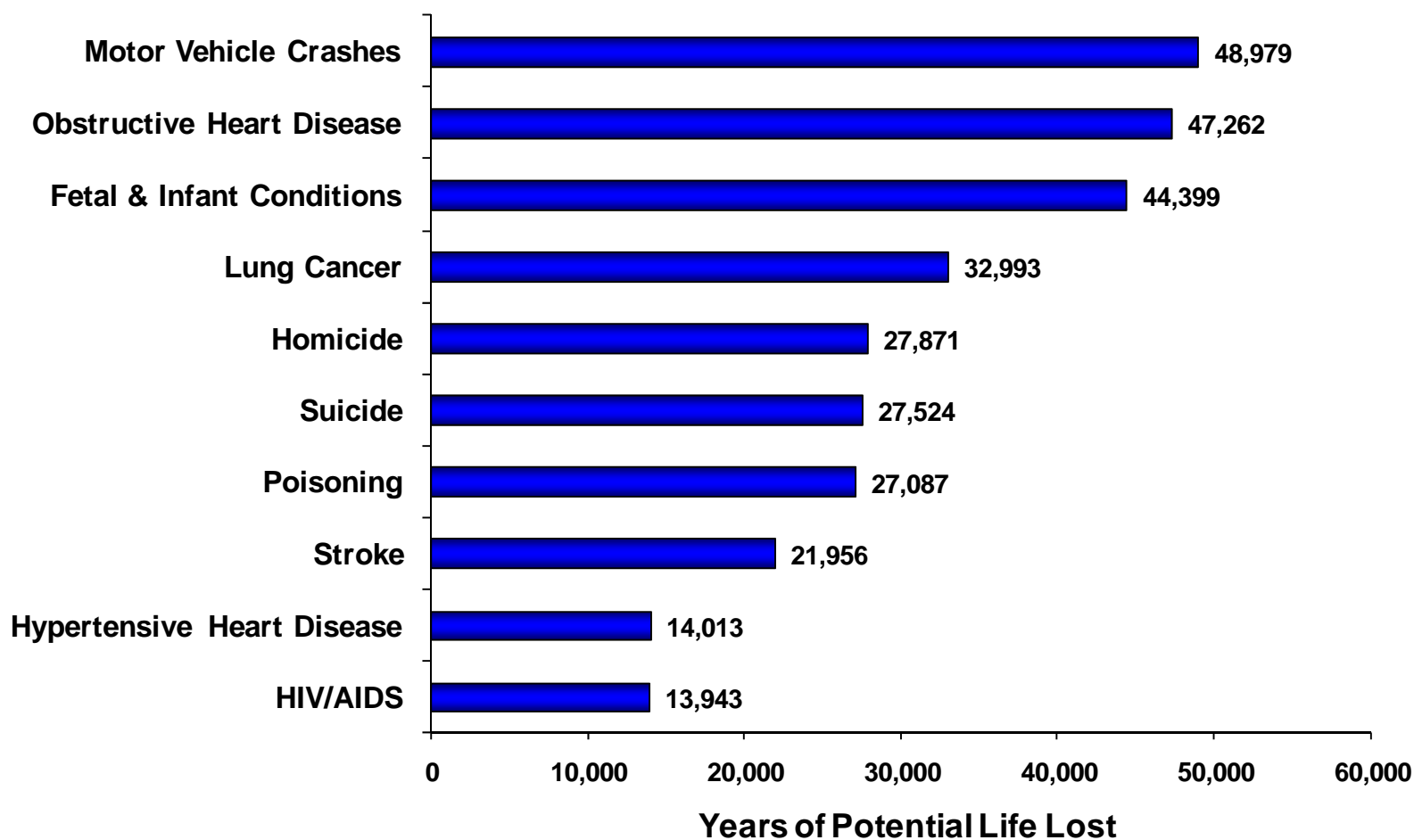


Actual Causes of Death, Georgia, 2006

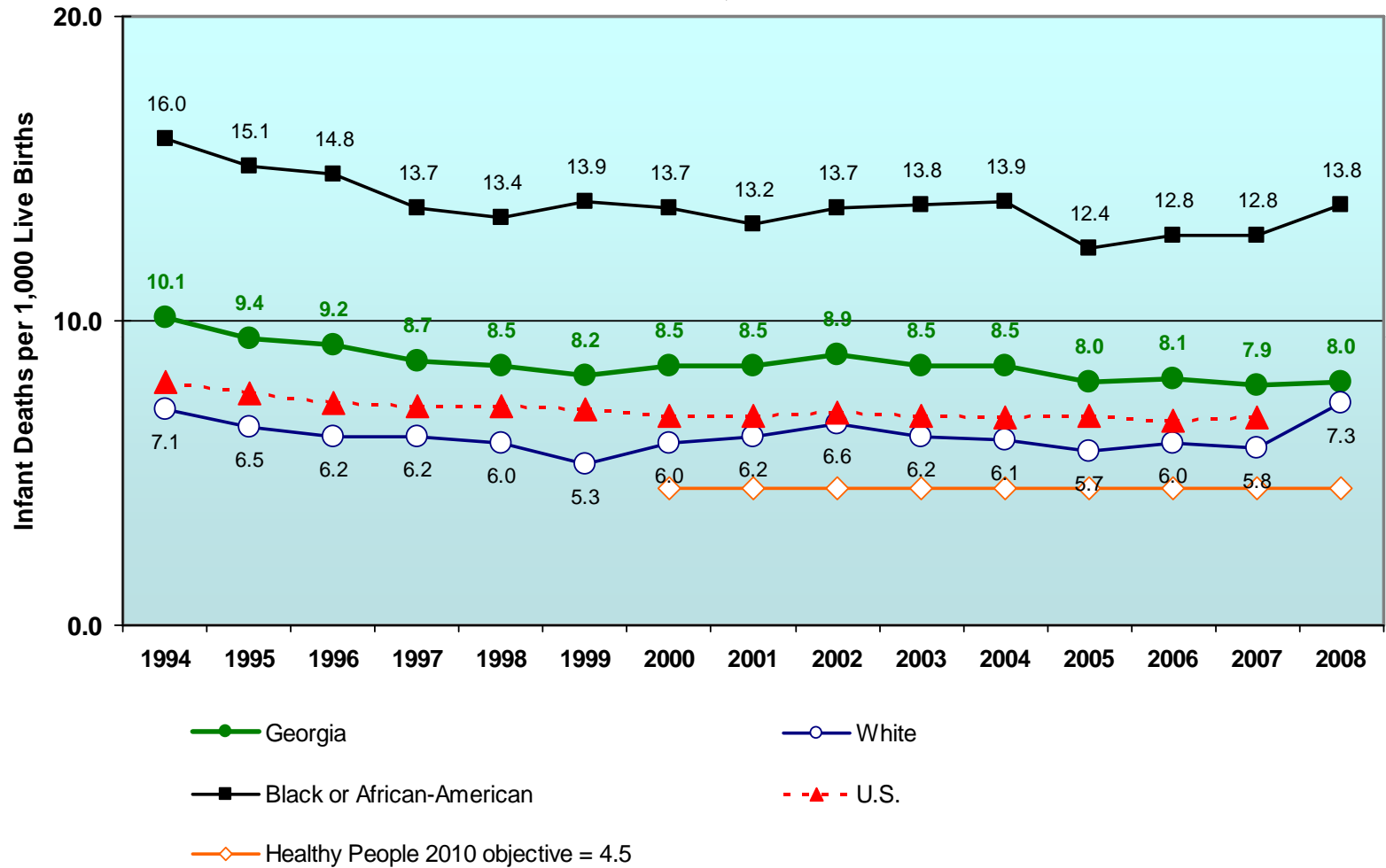
N=31,326



Leading Causes of Premature Deaths (before age 75), Georgia, 2008



Infant Mortality Rate, Total and by Race, Georgia, and U.S. Total, 1994-2008

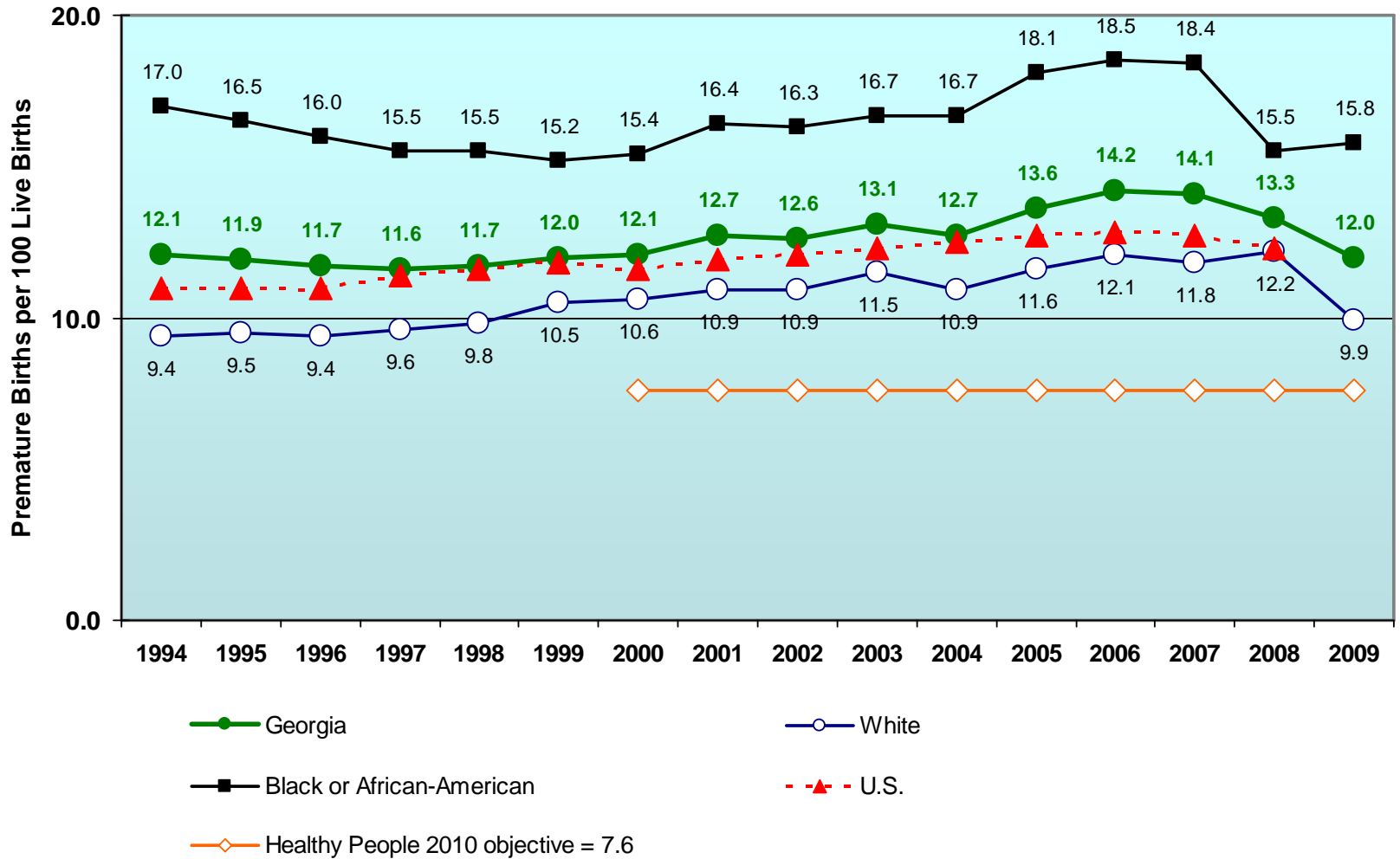


Sources: Centers for Disease Control, Vital Statistics System, Mortality Data. September 14, 2009 <http://www.cdc.gov/nchs/deaths.htm>

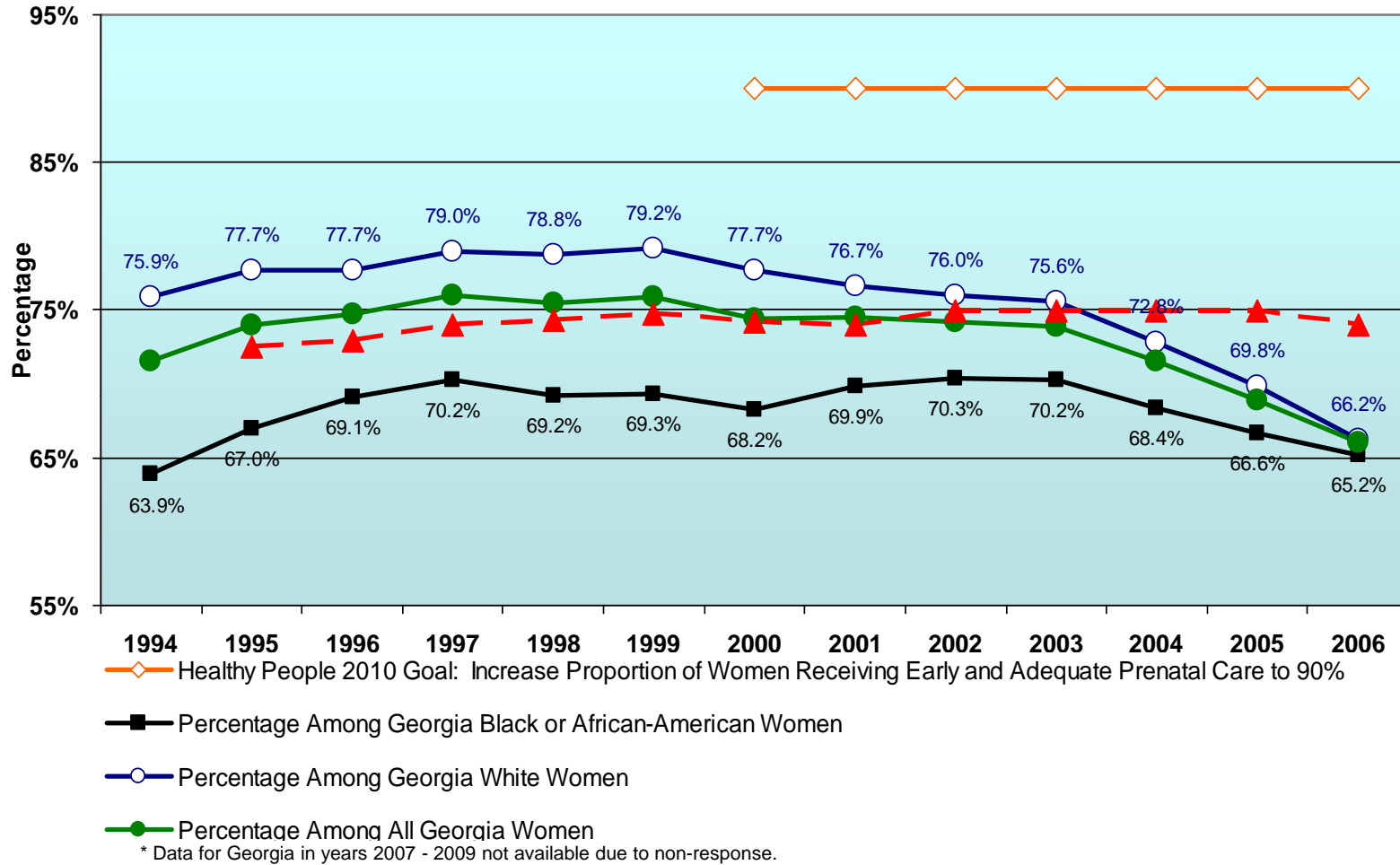
Online Analytical Statistical Information System (OASIS) Georgia Department of Public Health, Office of Health Indicators for Planning (OHIP). <http://oasis.state.ga.us/>



Premature (<37 weeks) Births, Total and by Race, Georgia, and U.S. Total, 1994-2009



Percentage¹ of Women Delivering an Infant Who Received Early and Adequate Prenatal Care^{2,3}, by Race, U.S. and Georgia, 1994-2009*

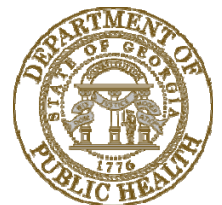


¹ Formula = [Total Number of Live Births with Adequate and Adequate Plus Kotelchuck Values / Total Number of Live Births] * 100.

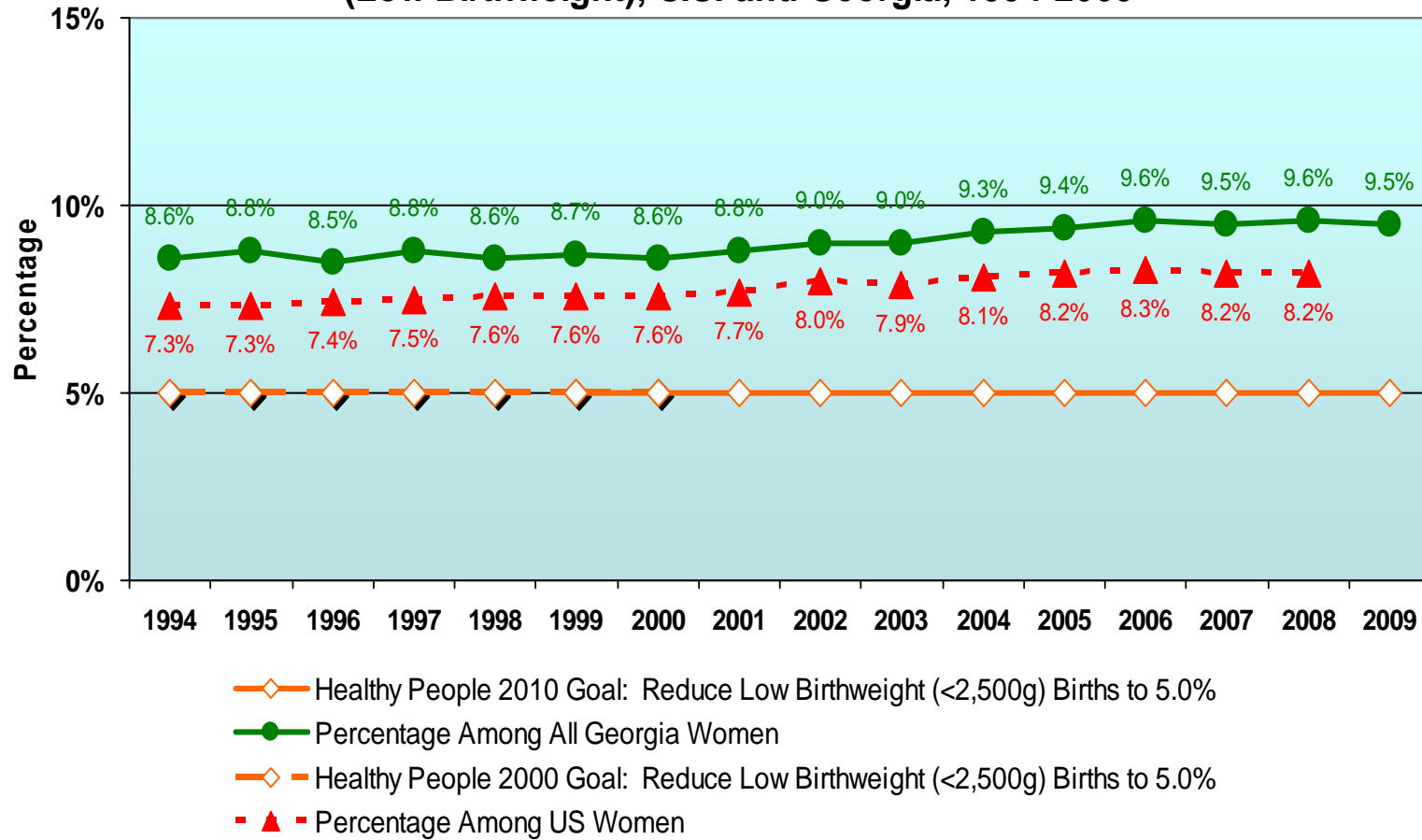
For race-specific percentages, both the numerator and denominator are filtered by race.

² Early and Adequate Prenatal Care is Defined in HP2010 as: The Adequacy of Prenatal Care Utilization Index (APNCU) which measures two dimensions of care: the adequacy of initiation of care and the adequacy of the use of prenatal services once care has begun (by comparing actual use to the recommended number of visits based on the month of initiation of care and the length of the pregnancy).

³ Georgia statistics obtained using Kotelchuck index values of "Adequate": and "Adequate Plus".



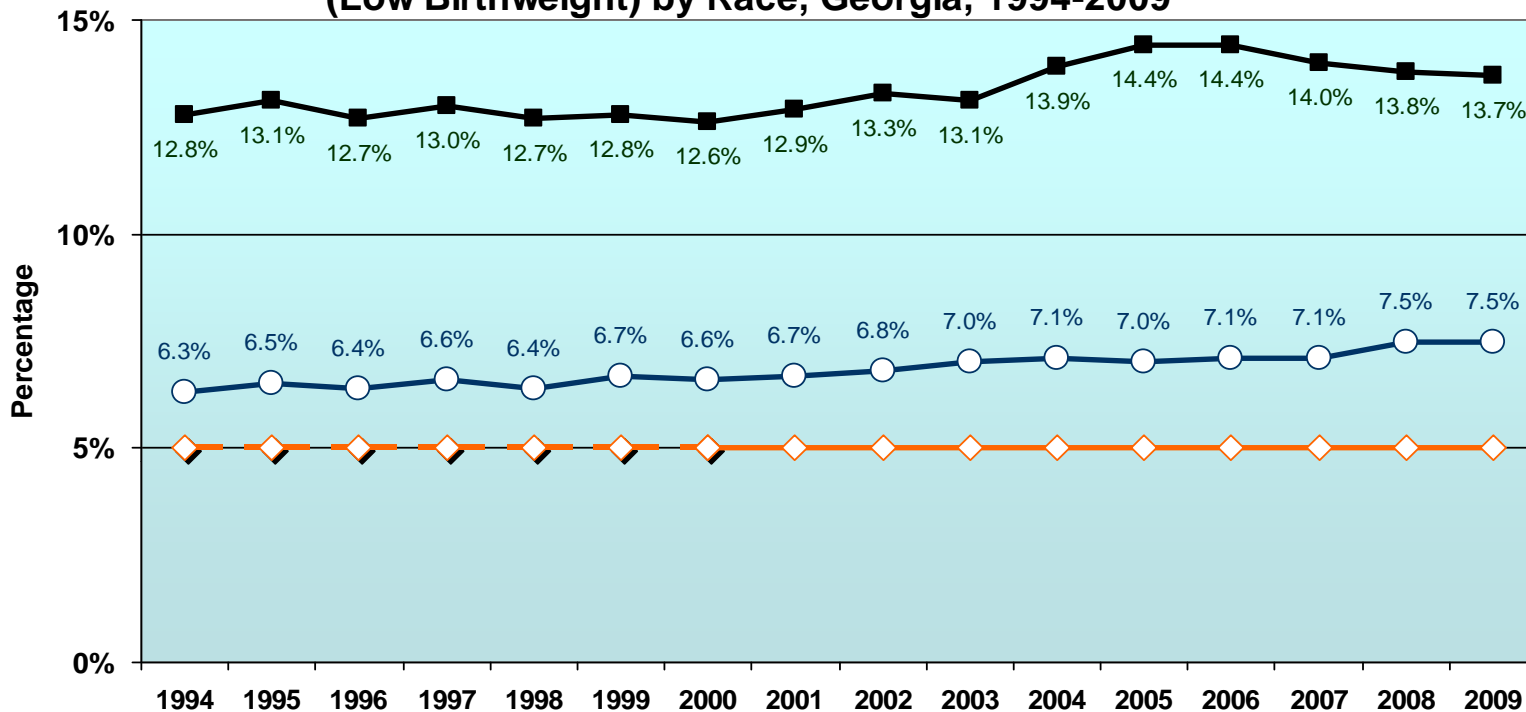
Percentage¹ of Live Births Weighing Less than 2,500 Grams (Low Birthweight), U.S. and Georgia, 1994-2009



¹ Formula = [Total Number of Live Births under 2,500 grams / Total Number of Live Births] * 100.
For race-specific percentages, both the numerator and denominator are filtered by race.

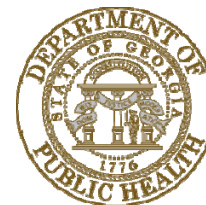


Percentage¹ of Live Births Weighing Less than 2,500 Grams (Low Birthweight) by Race, Georgia, 1994-2009

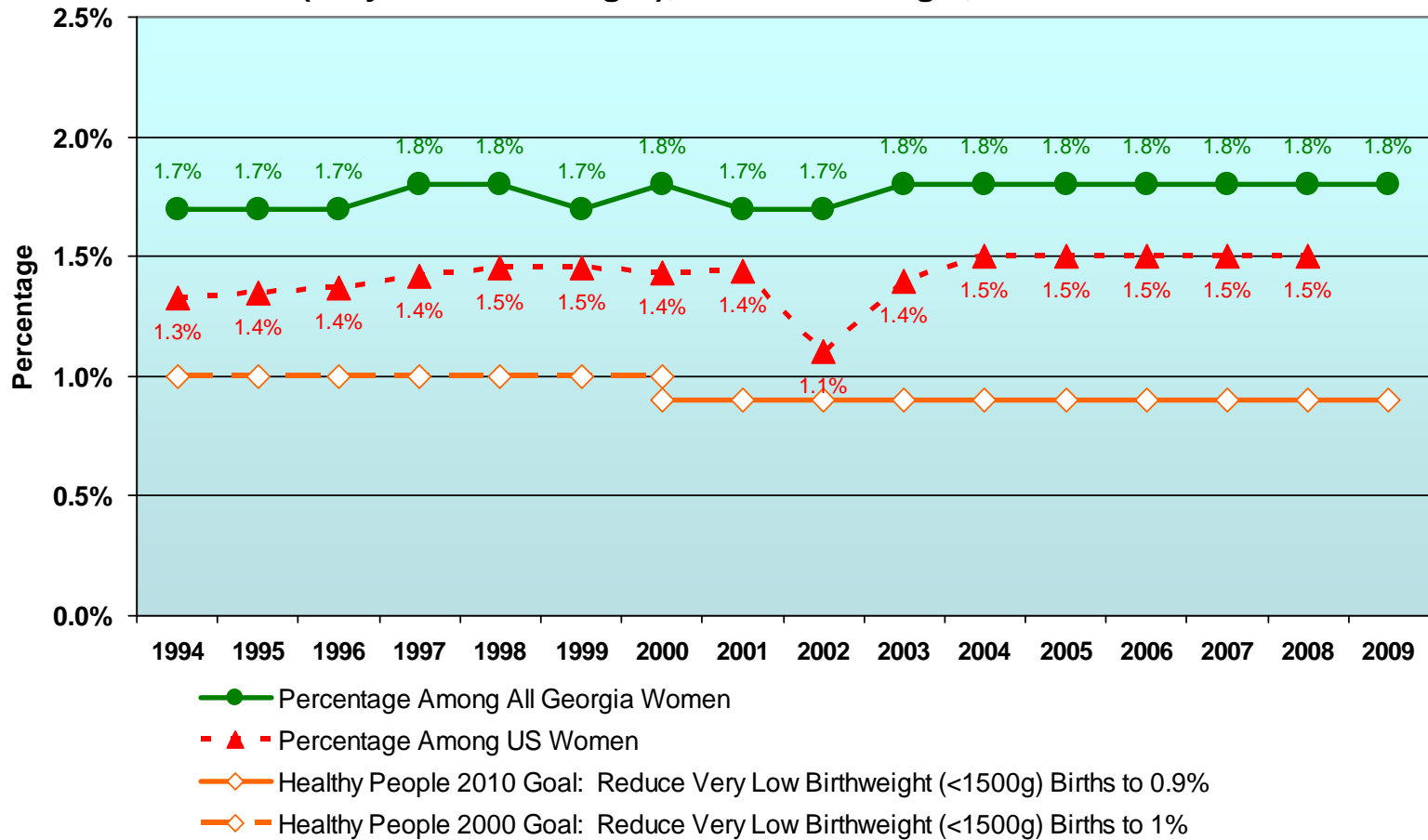


- ◆ Healthy People 2010 Goal: Reduce Low Birthweight (<2500g) Births to 5.0%
- Percentage Among Georgia Black or African-American Women
- Percentage Among Georgia White Women
- ◆ Healthy People 2000 Goal: Reduce Low Birthweight (<2500g) Births to 5.0%

¹ Formula = [Total Number of Live Births under 2,500 grams / Total Number of Live Births] * 100.
For race-specific percentages, both the numerator and denominator are filtered by race.



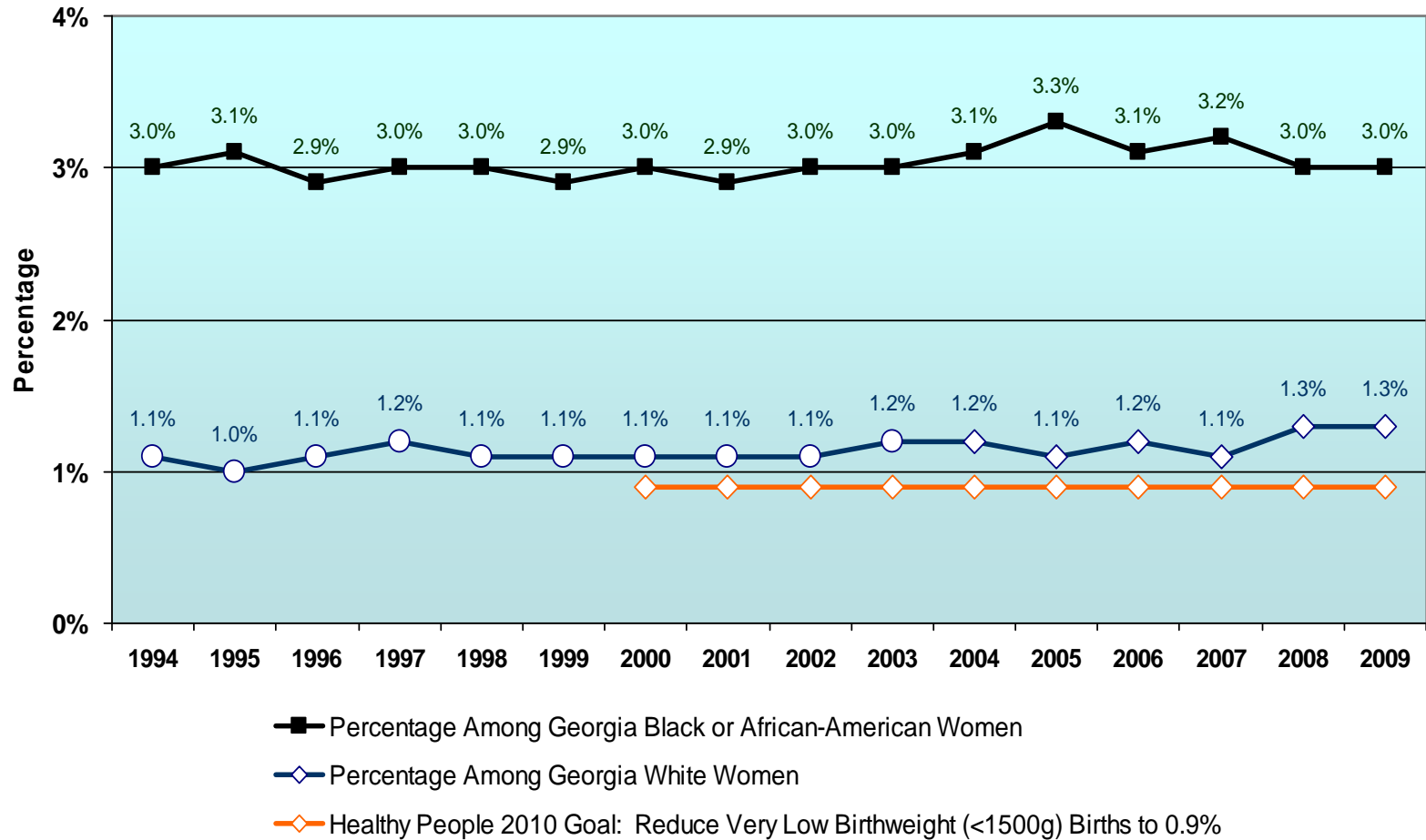
Percentage¹ of Live Births Weighing Less than 1,500 Grams (Very Low Birthweight), U.S. and Georgia, 1994-2009



¹Formula = [Total Number of Live Births under 2,500 grams / Total Number of Live Births] * 100.



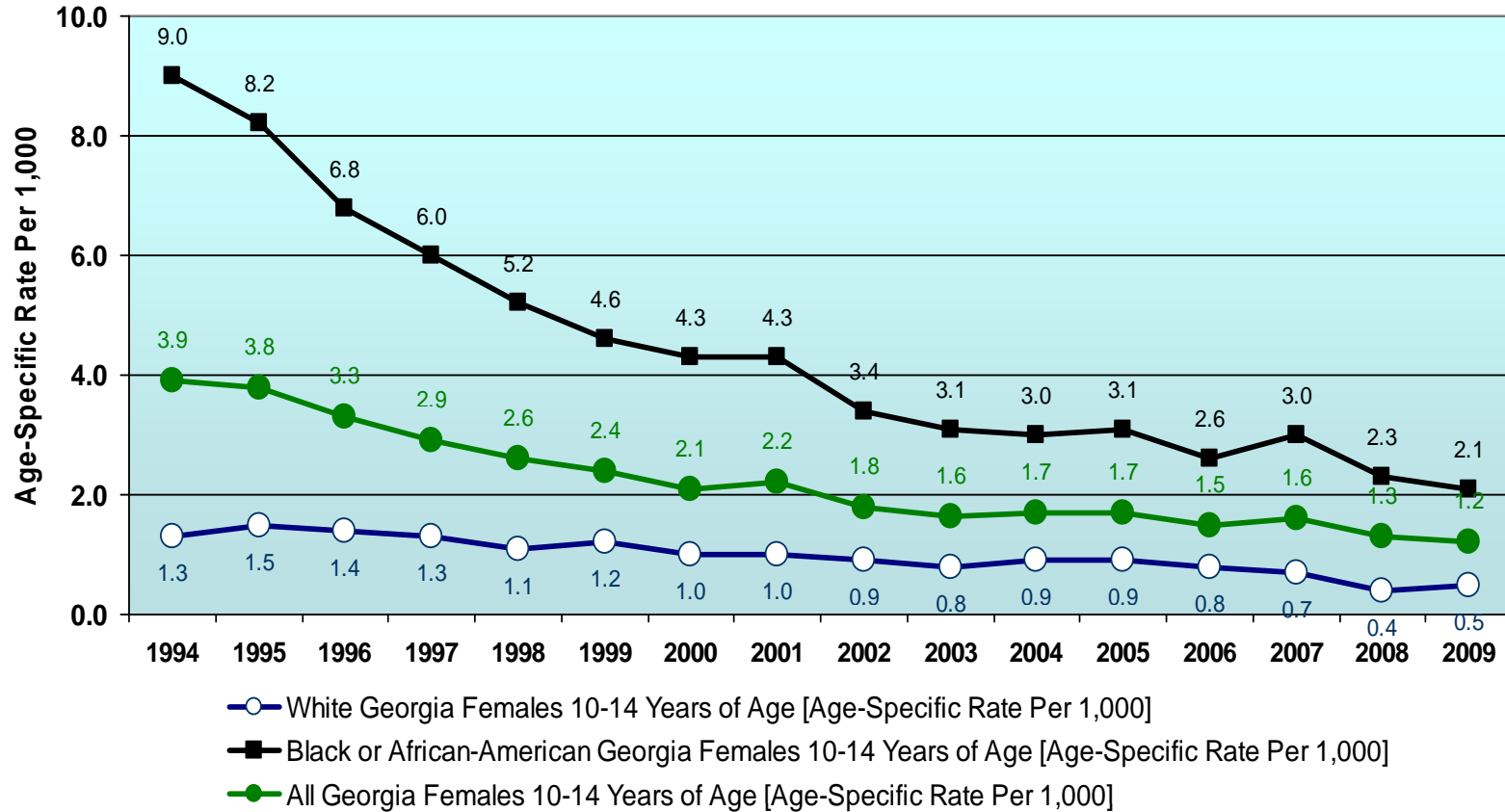
Percentage¹ of Live Births Weighing Less than 1,500 Grams (Very Low Birthweight) by Race, Georgia, 1994-2009



¹Formula = [Total Number of Live Births under 1,500 grams / Total Number of Live Births] * 100.
For race-specific percentages, both the numerator and denominator are filtered by race.



Age-Specific Pregnancy¹ Rate², Females 10-14 Years of Age, Total and by Race, Georgia, 1994-2009



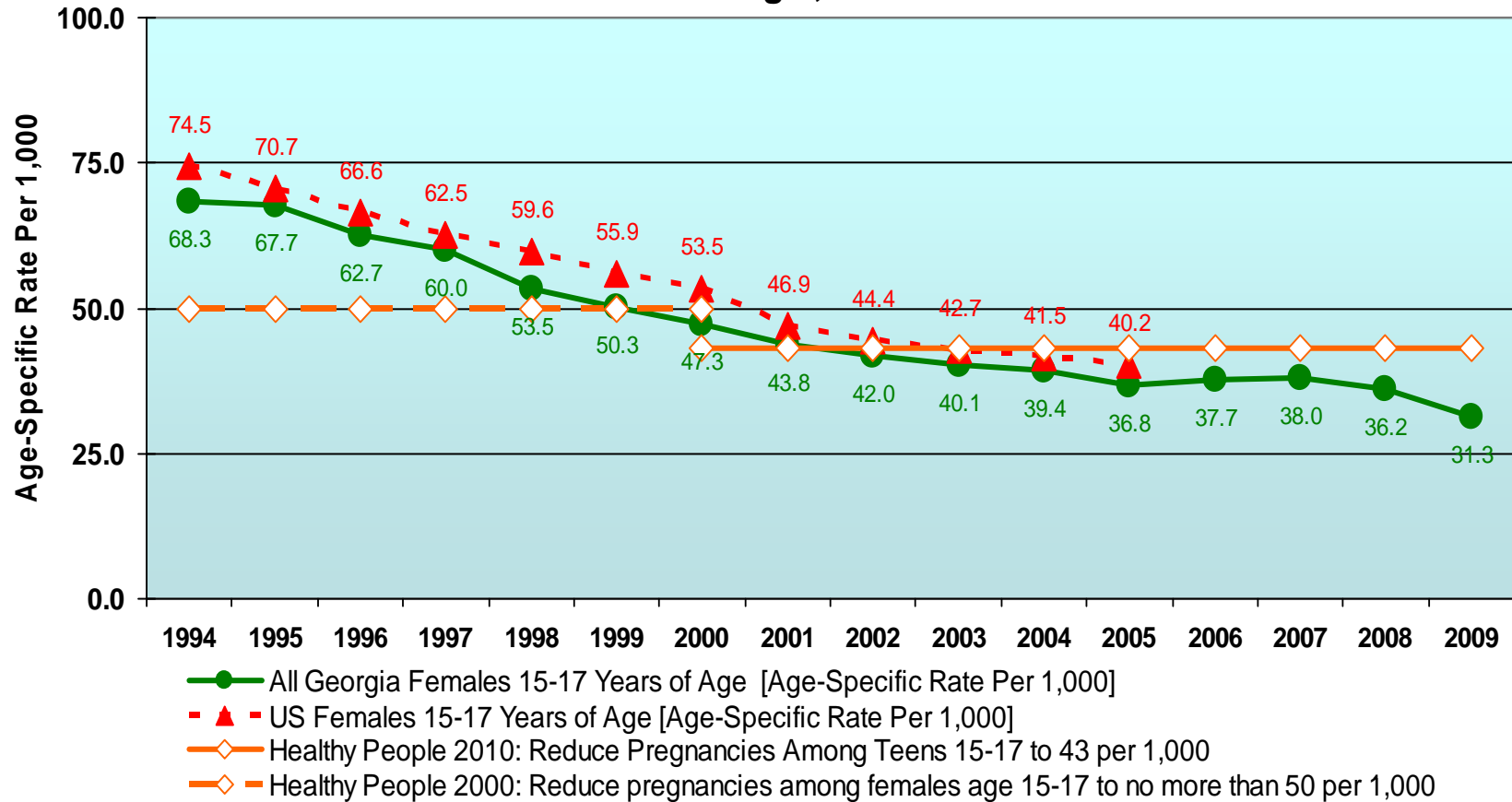
¹Pregnancies include conceptions that result in one or more Live Births, all Fetal Deaths and Induced Terminations.

²The total number of pregnancies occurring to females in specified age group per 1,000 females in the specified age group.

Formula = [Total number of pregnancies in age group / Total females in age group] * 1,000. For race-specific percentages, both the numerator and denominator are filtered by race.



Age-Specific Pregnancy¹ Rate², Females 15-17 Years of Age, U.S. and Georgia, 1994-2009



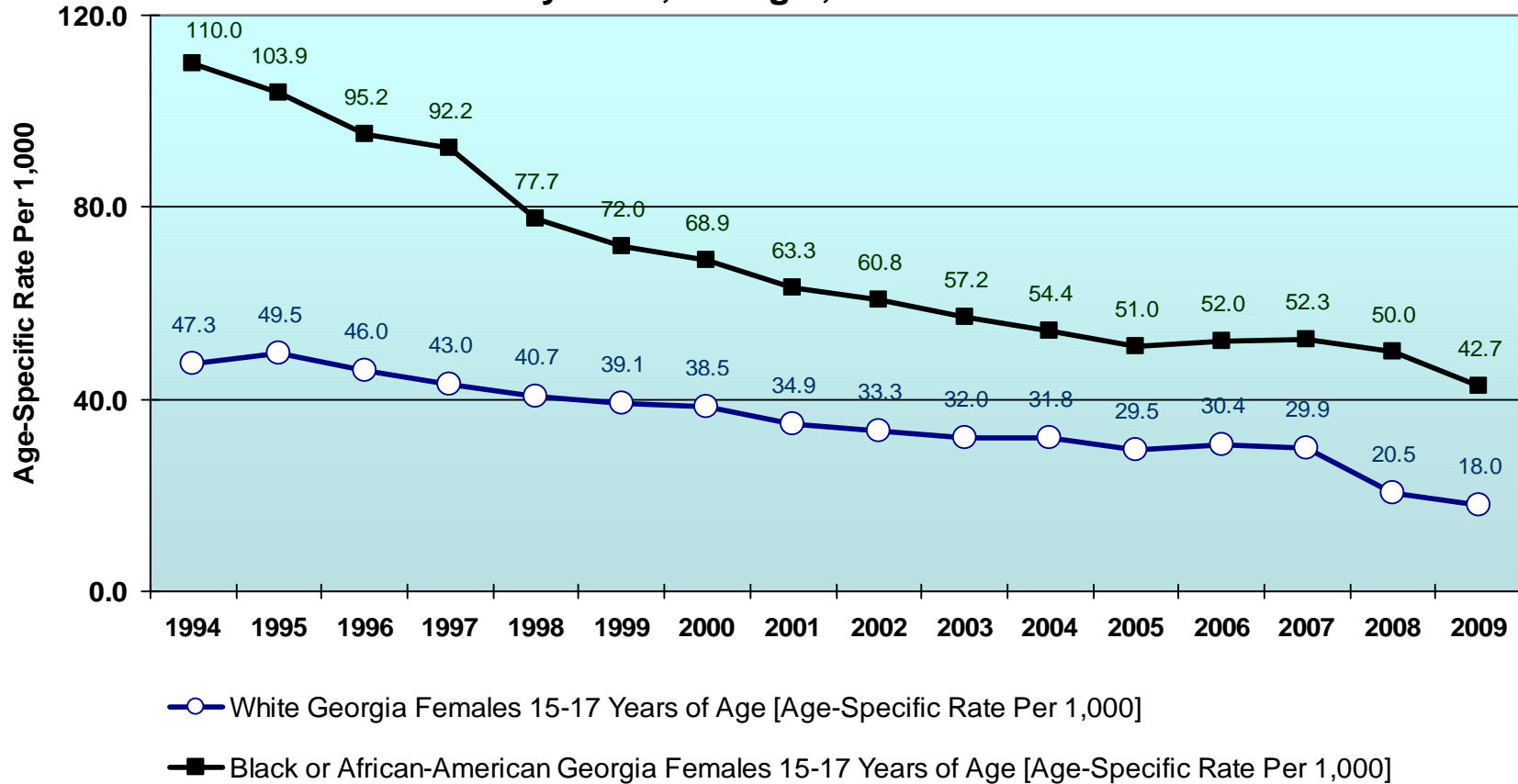
¹Pregnancies include conceptions that result in one or more Live Births, all Fetal Deaths and Induced Terminations.

²The total number of pregnancies occurring to females in specified age group per 1,000 females in the specified age group.

Formula = [Total number of pregnancies in age group / Total females in age group] * 1,000. For race-specific percentages, both the numerator and denominator are filtered by race.



Age-Specific Pregnancy¹ Rate², Females 15-17 Years of Age, by Race, Georgia, 1994-2009



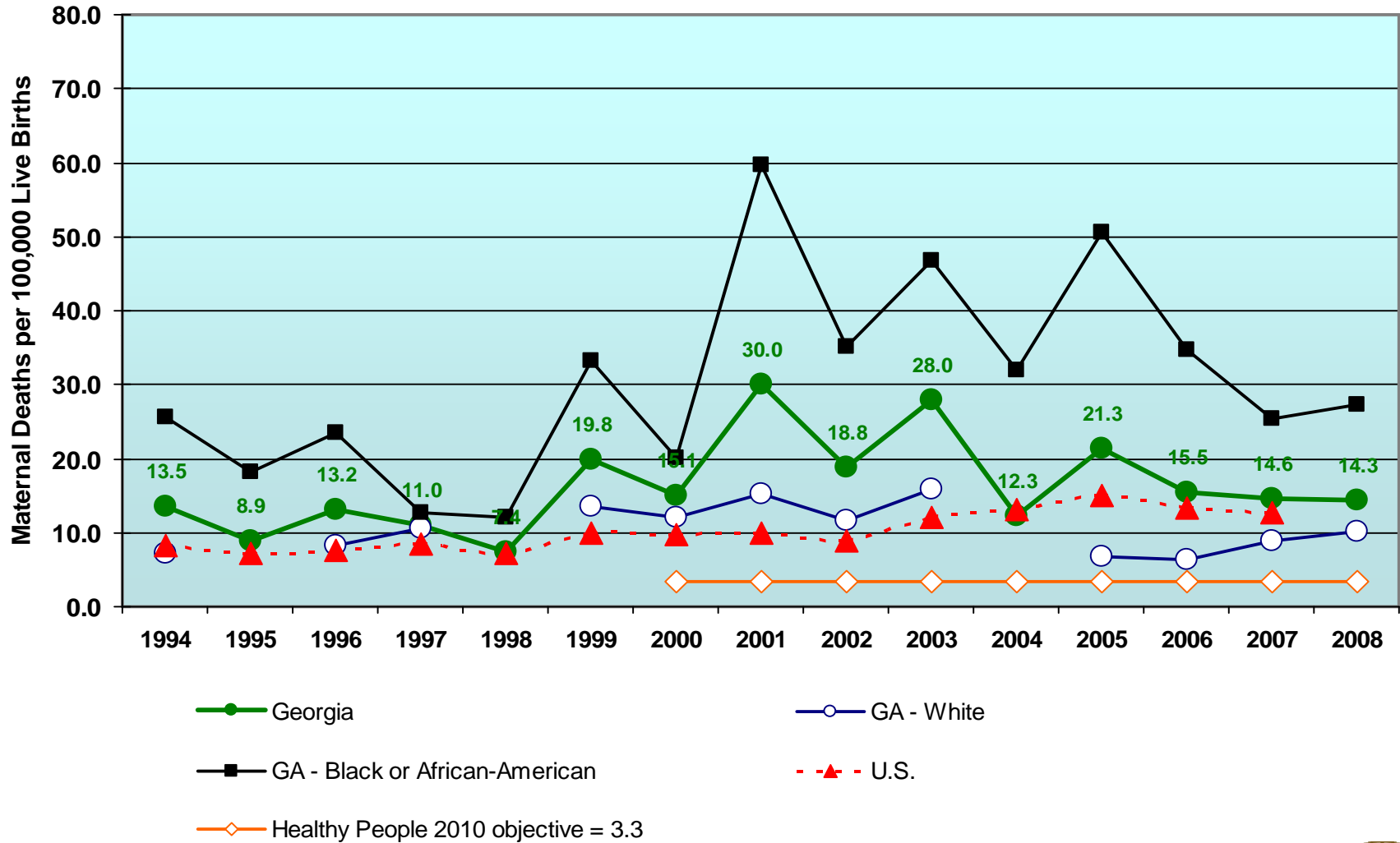
¹Pregnancies include Conceptions that result in one or more Live Births, all Fetal Deaths and Induced Terminations.

²The total number of pregnancies occurring to females in a specified age group per 1,000 females in the specified age group.

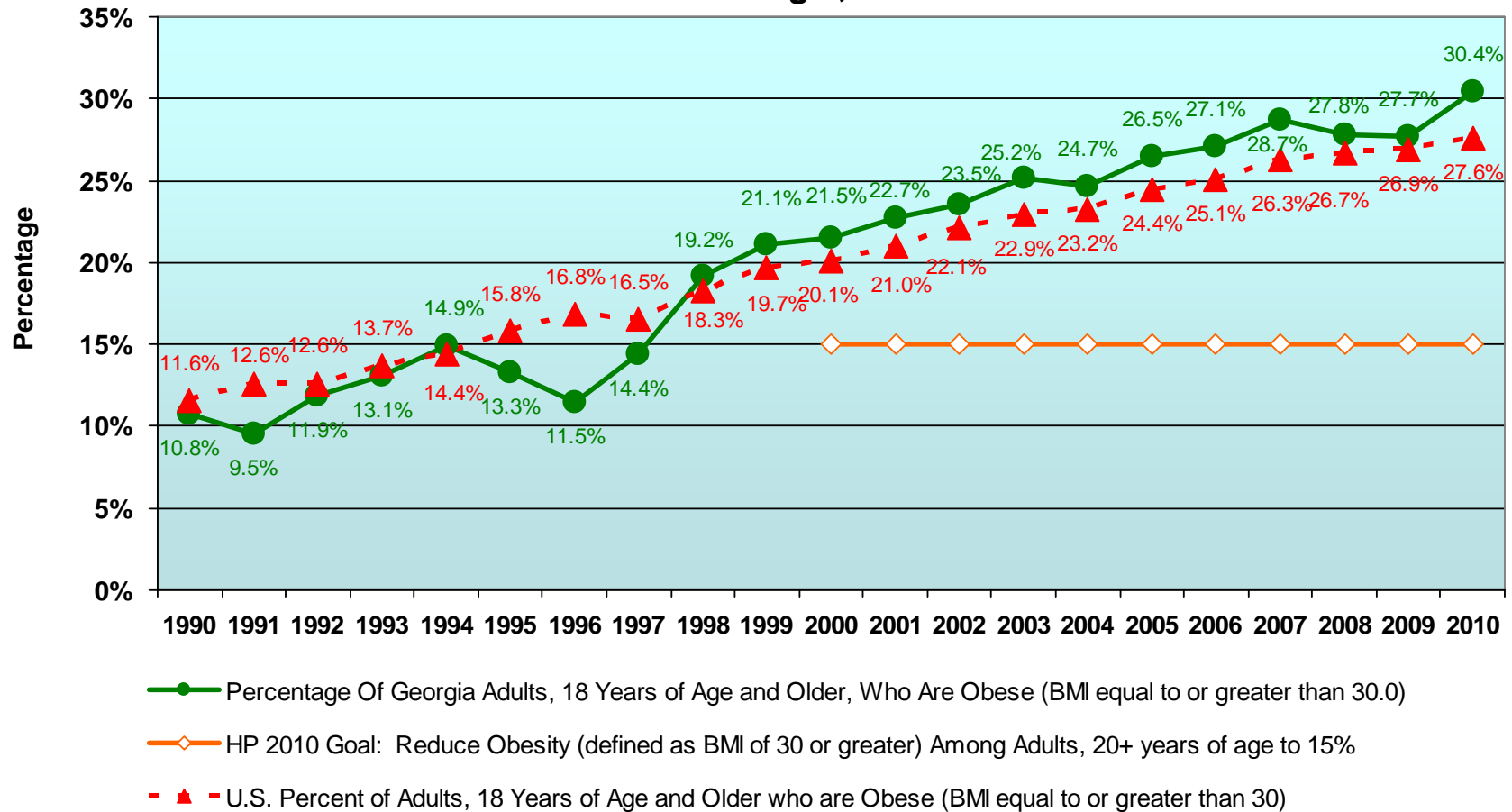
Formula = [Total number of pregnancies in age group / Total females in age group] * 1,000. For race-specific percentages, both the numerator and denominator are filtered by race.



Maternal Mortality, Total and by Race, Georgia, and U.S. Total, 1994-2008



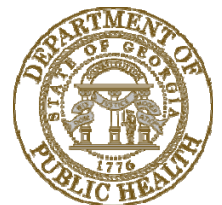
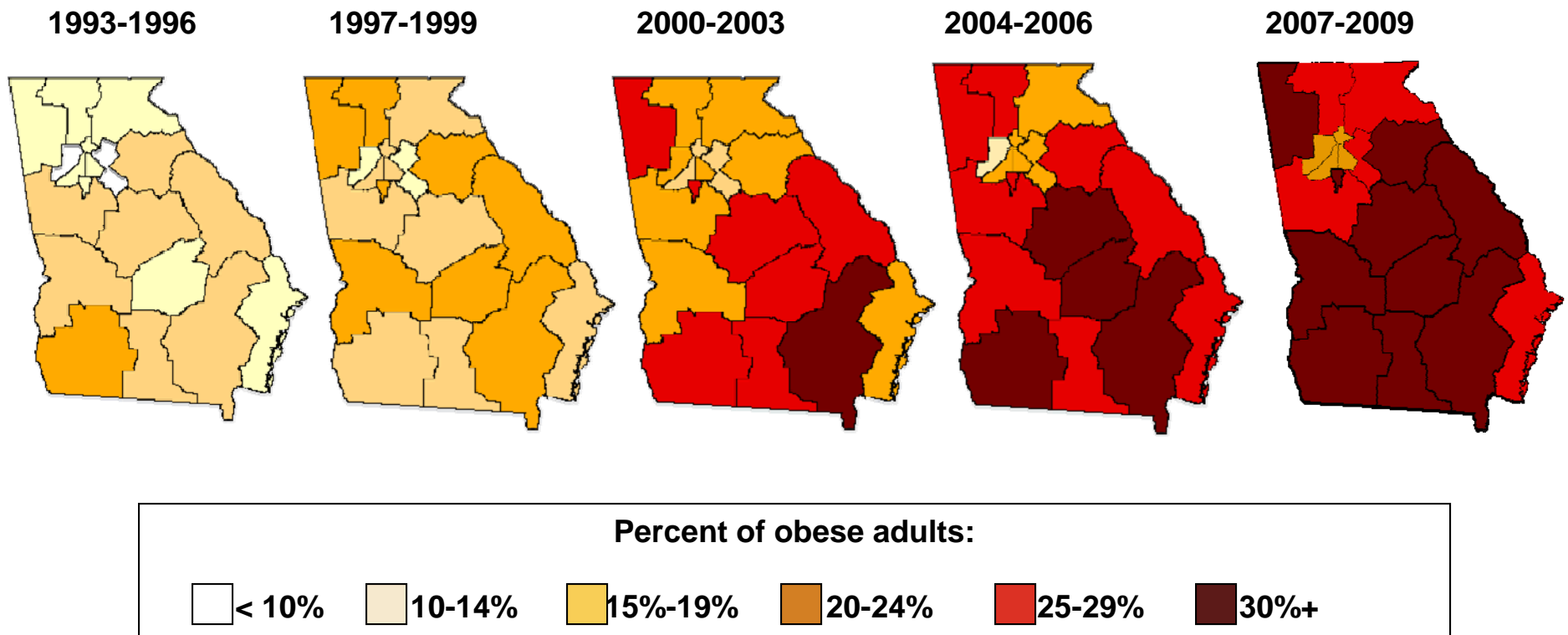
Percentage of Adults 18 Years of Age and Older, who are Obese, U.S. and Georgia, 1990-2010



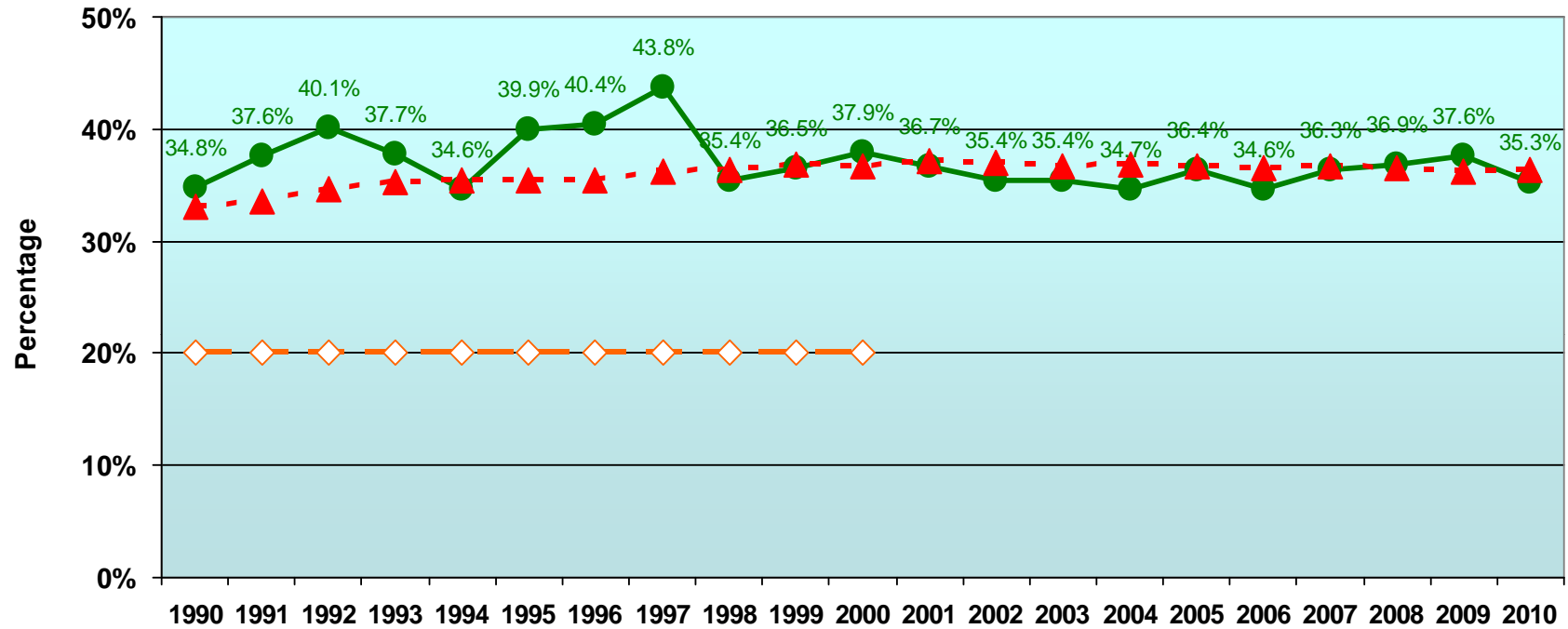
Obesity is self-reported. Body Mass Index (BMI) is measured as weight in kilograms/height in meters



Geographic Trends in Obesity



Percentage of Adults 18 Years of Age and Older, who are Overweight, U.S. and Georgia, 1990-2010

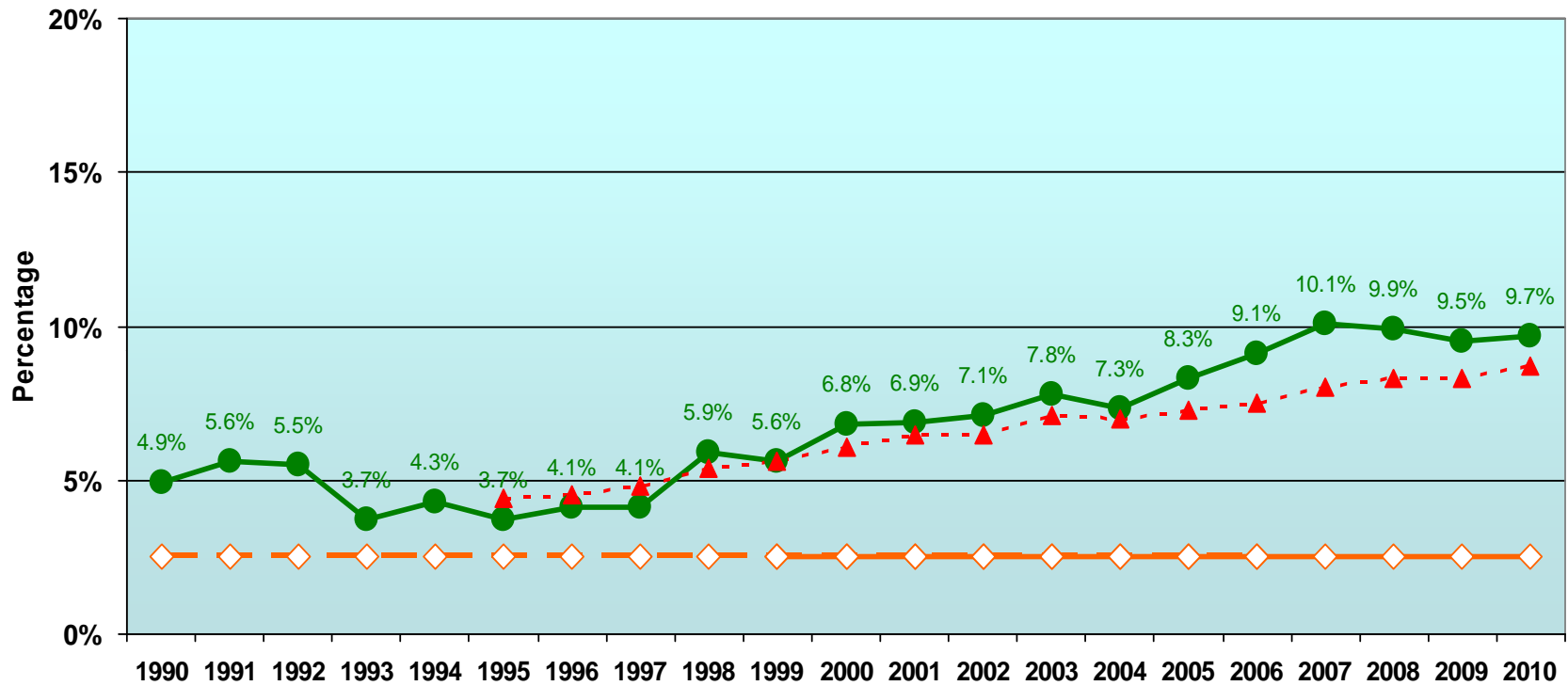


- — Percentage Of Georgia Adults, 18 Years of Age and Older, Who Are Overweight (BMI 25.0 - 29.9)
- ◇ — HP 2000 Goal: Reduce Overweight (defined as BMI of 27.8 or greater) among Adults 20+ Years of Age to no more than 20%
- ▲ — U.S. Percentage of Adults, 18 Years of Age and Older, Who are Overweight (BMI 25.0 - 29.9)

Overweight is self-reported. Body Mass Index (BMI) is measured as weight in kilograms/height in meters



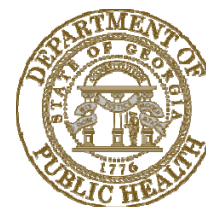
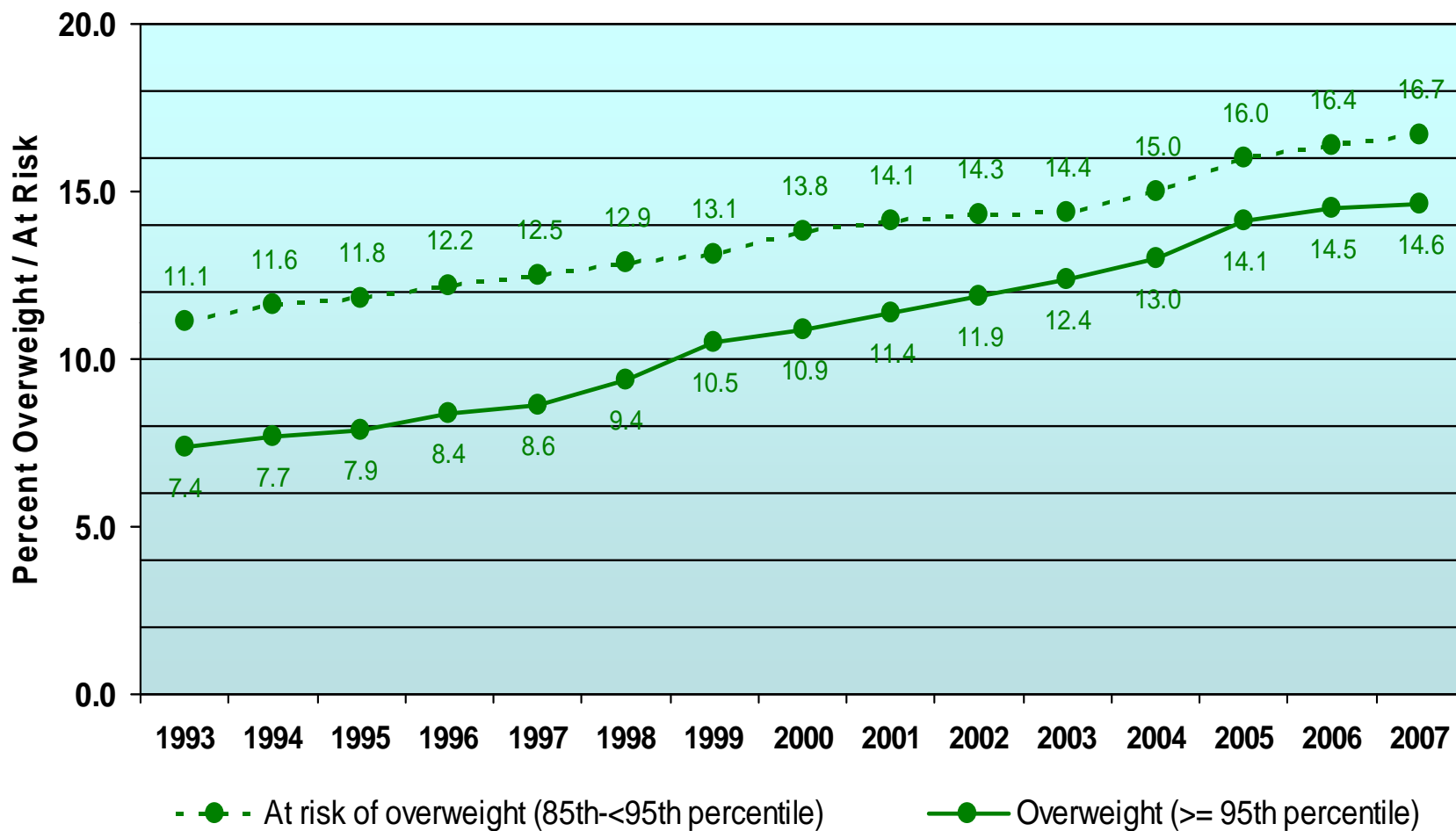
Percentage of Adults 18 Years of Age and Older who have Diabetes, U.S. and Georgia, 1990-2010



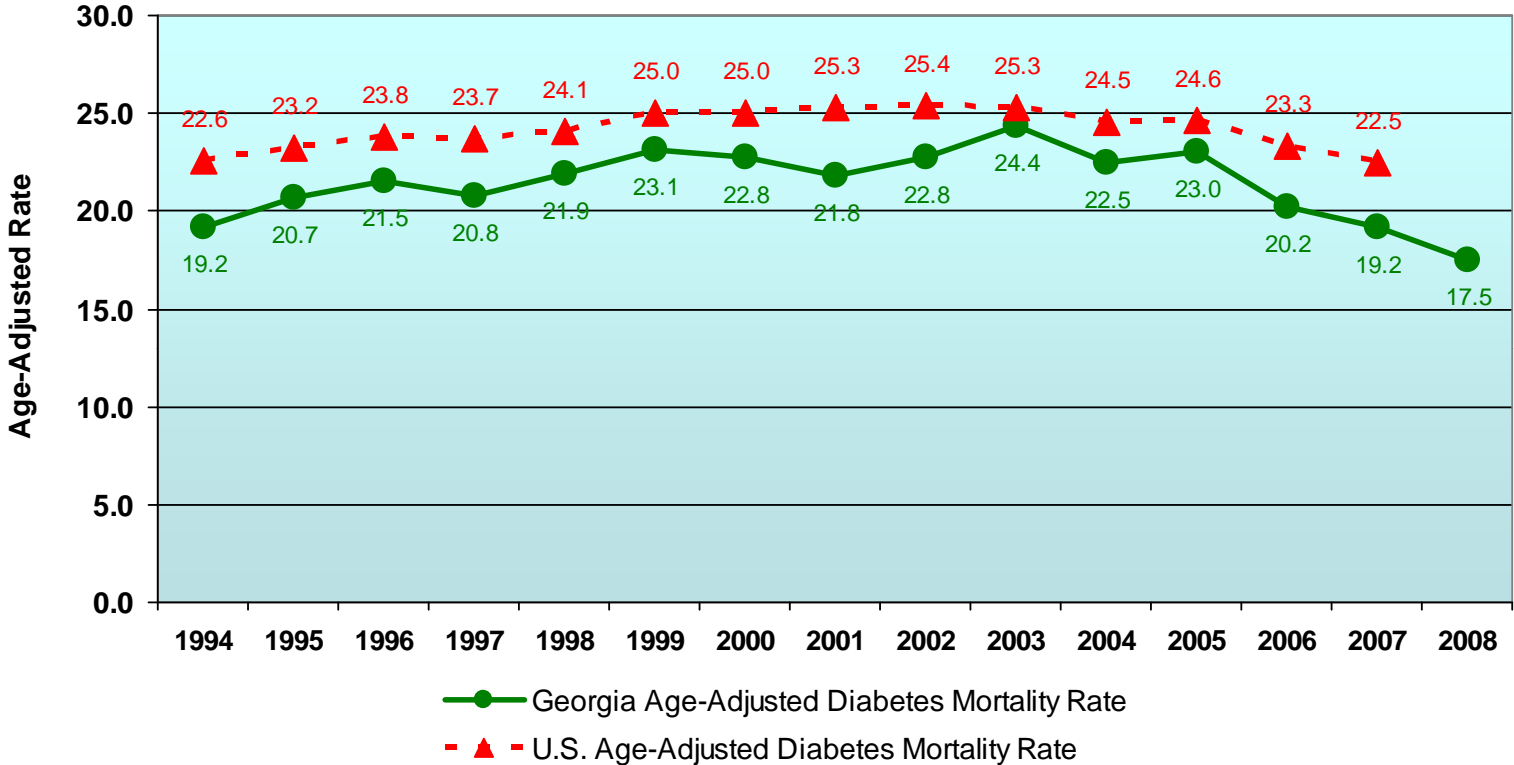
- ◇— Healthy People 2010: Reduce the overall rate of diabetes that is clinically diagnosed no more than 25 per 1,000 people (2.5%)
- Percentage Georgia Adults 18+, Who Have Ever Been Told by a Doctor They Have Diabetes (self reported)
- ◇— Healthy People 2000 : Reduce diabetes to an incidence of no more than 25 per 1,000 people (2.5%)
- ▲- U.S.



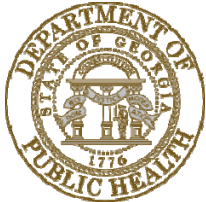
Trends in the Prevalence of Overweight and At-risk of Overweight, Georgia WIC Population 2 to 5 Years of Age, 1993-2007



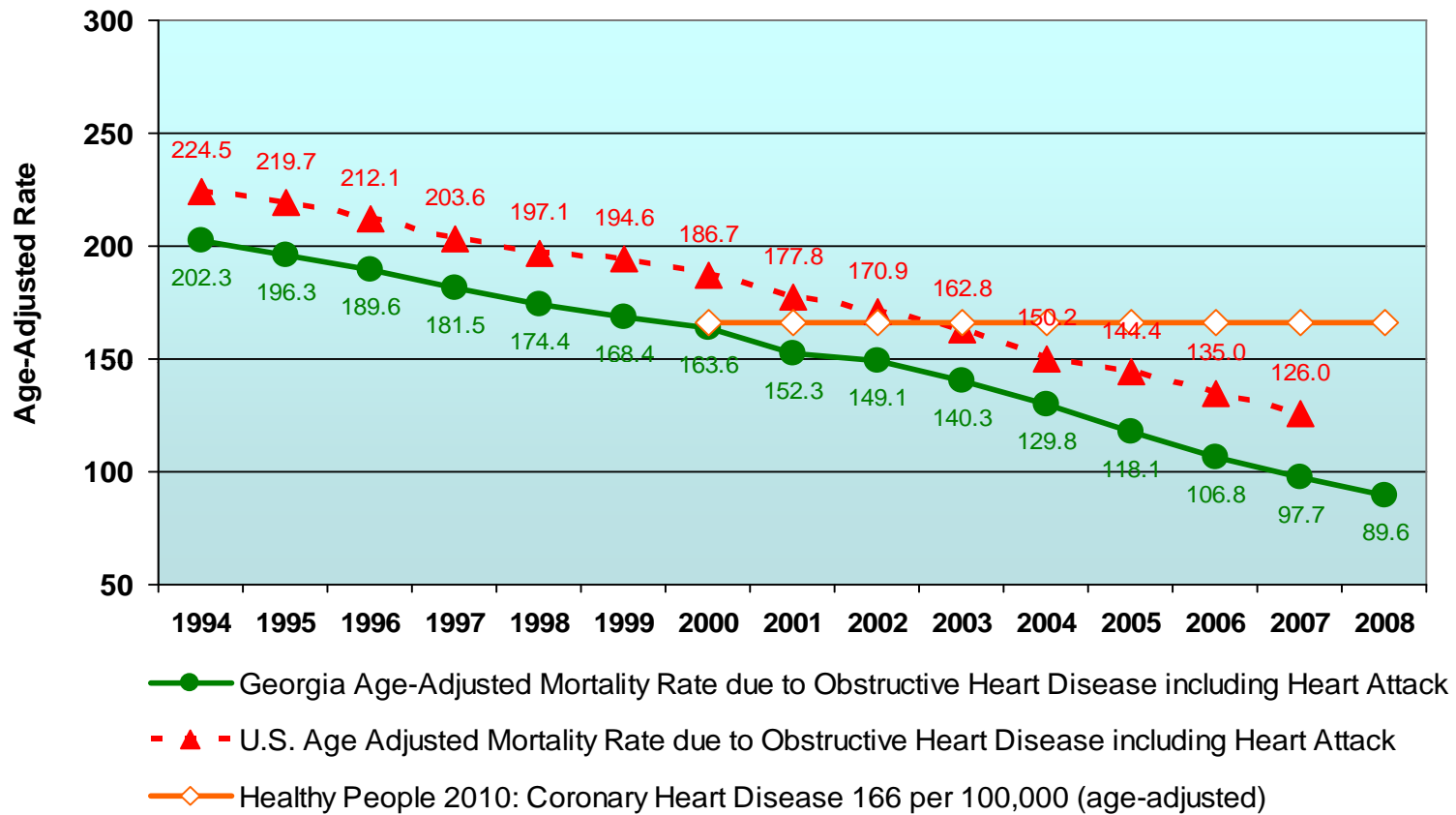
Age-Adjusted¹ Diabetes Mortality Rates, U.S. and Georgia, 1994-2008



¹Age-Adjusted to the 2000 Standard Million.



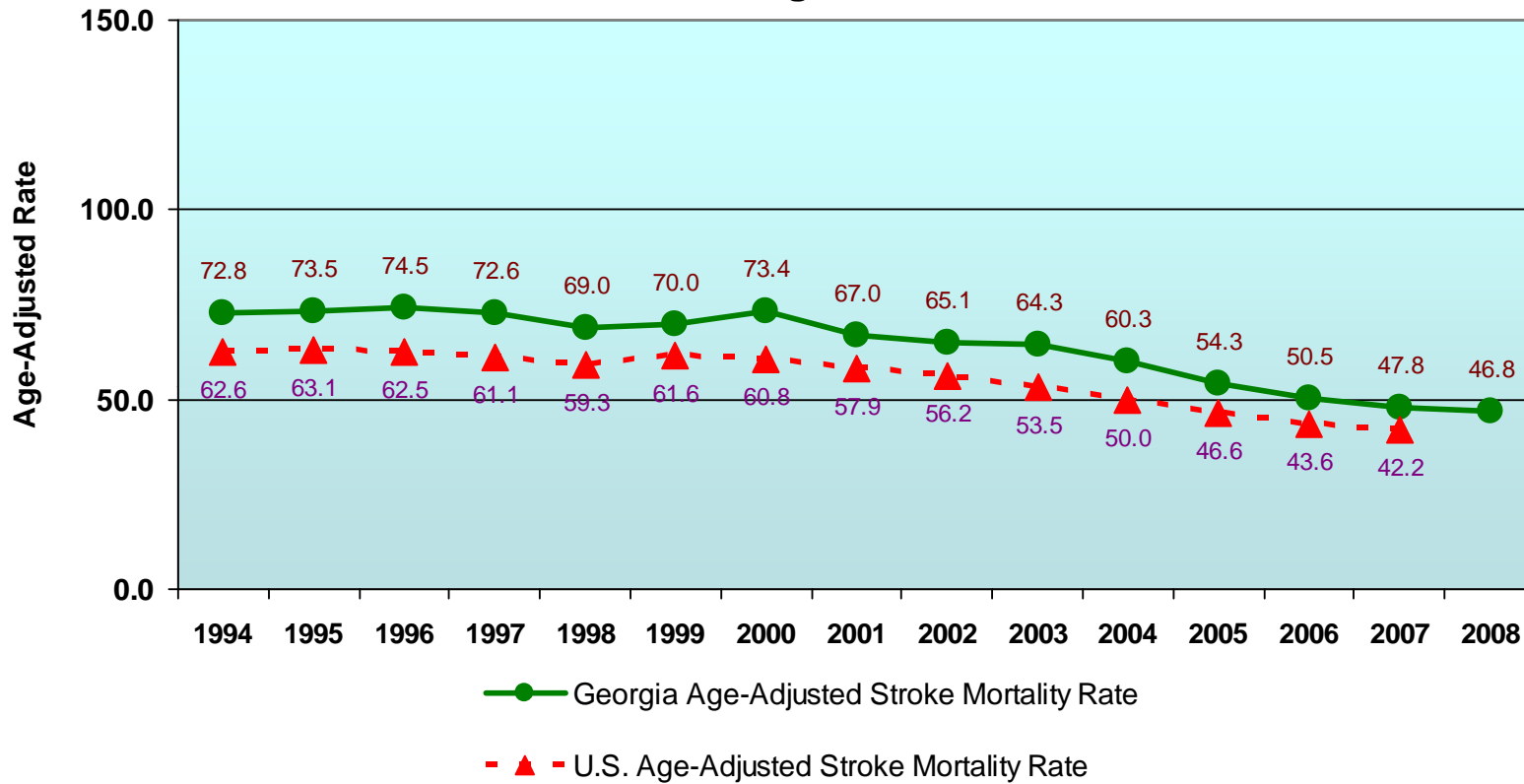
Age-Adjusted¹ Heart Attack Mortality Rates, U.S. and Georgia 1994-2008



¹Age-Adjusted to the 2000 Standard Million.
Obstructive Heart Disease including Heart Attack = ICD10 I20-I25 (ICD9 410-414, 429.2)



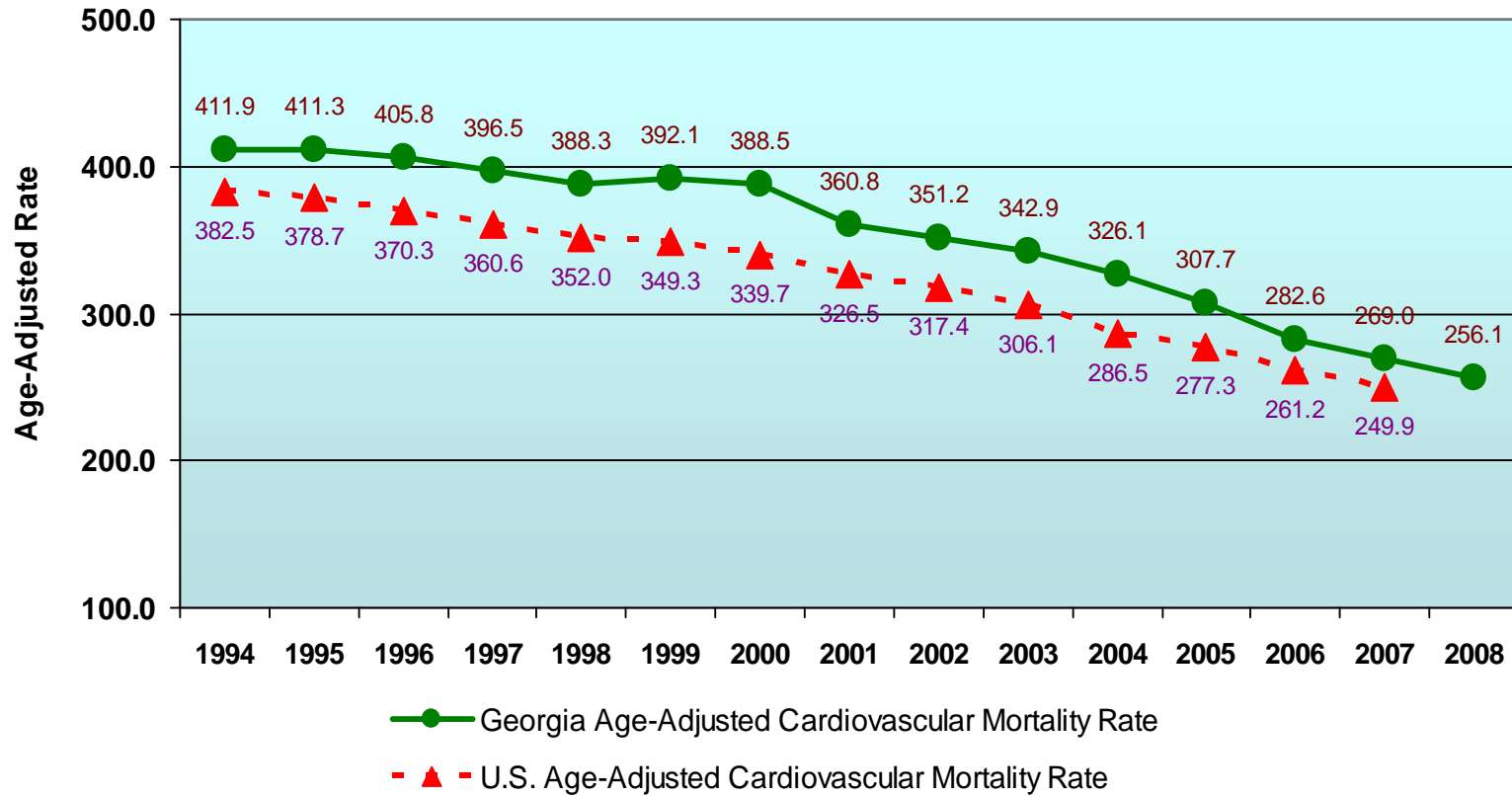
Age-Adjusted¹ Stroke Mortality Rates, U.S. and Georgia 1994-2008



¹Age-Adjusted to the 2000 Standard Million.
Stroke = ICD I60-I69 (ICD9 430-434, 436-438)



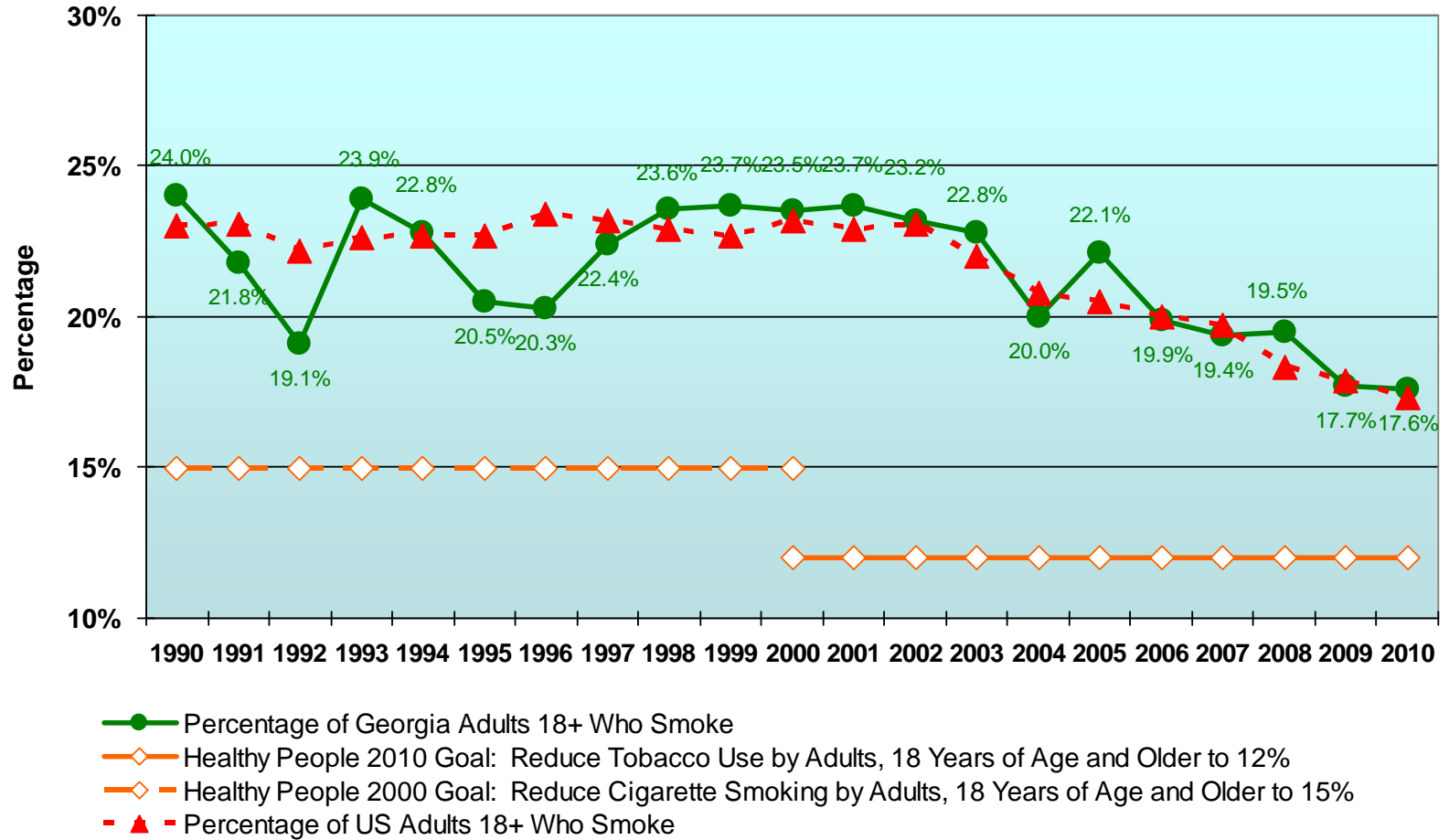
Age-Adjusted¹ Cardiovascular Mortality Rates, U.S. and Georgia 1994-2008



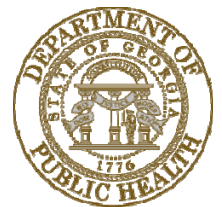
¹Age-Adjusted to the 2000 Standard Million.
 Cardiovascular = ICD10 I00-I78 (ICD9 390-434, 436-448)



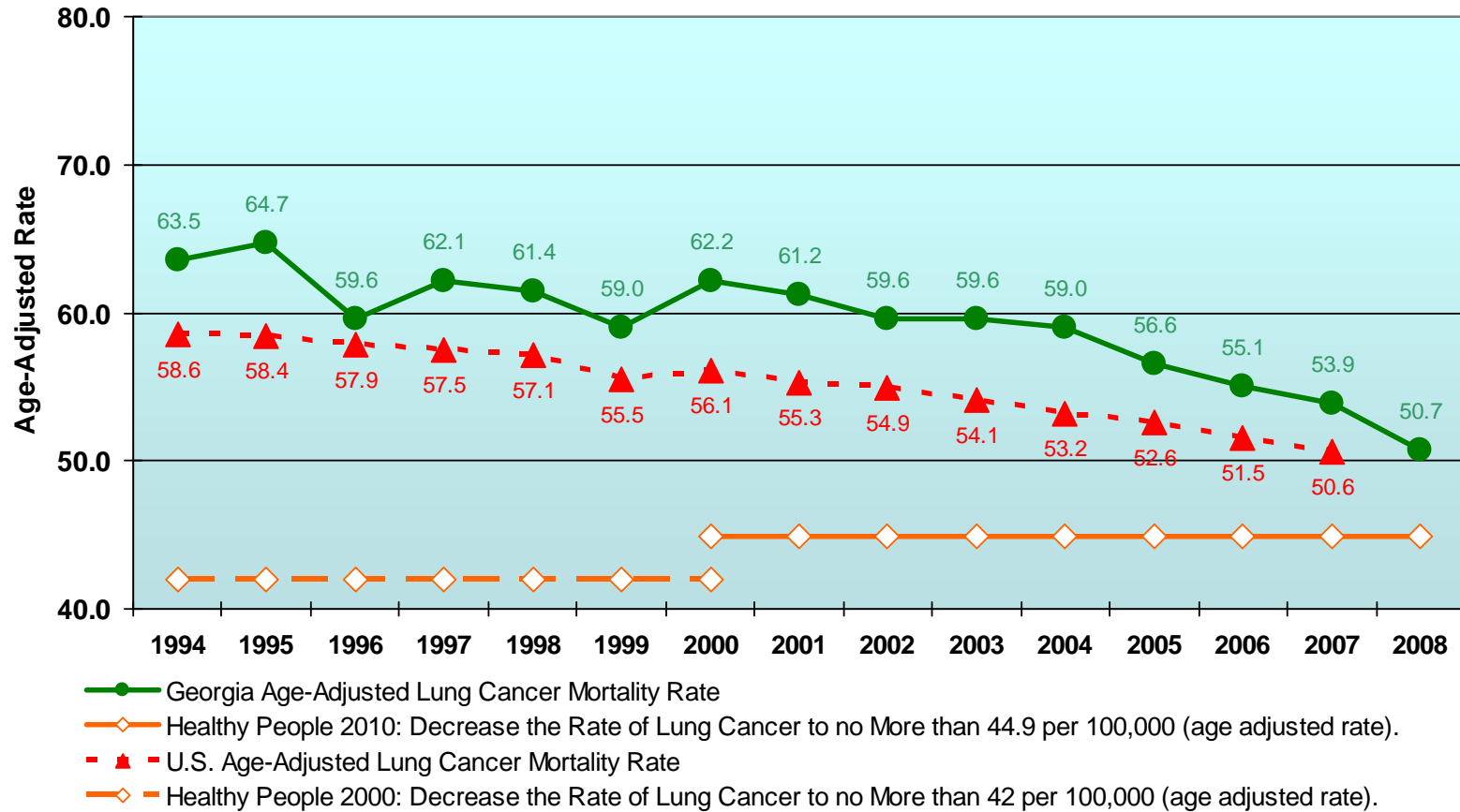
Percentage of Adults, 18 Years of Age and Older Who Smoke, U.S. and Georgia, 1990-2010



Source: Centers for Disease Control & Prevention, National Center for Chronic Disease Prevention and Health Promotion, Behavioral Risk Factor Surveillance System (BRFSS), <http://www.cdc.gov/BRFSS/>



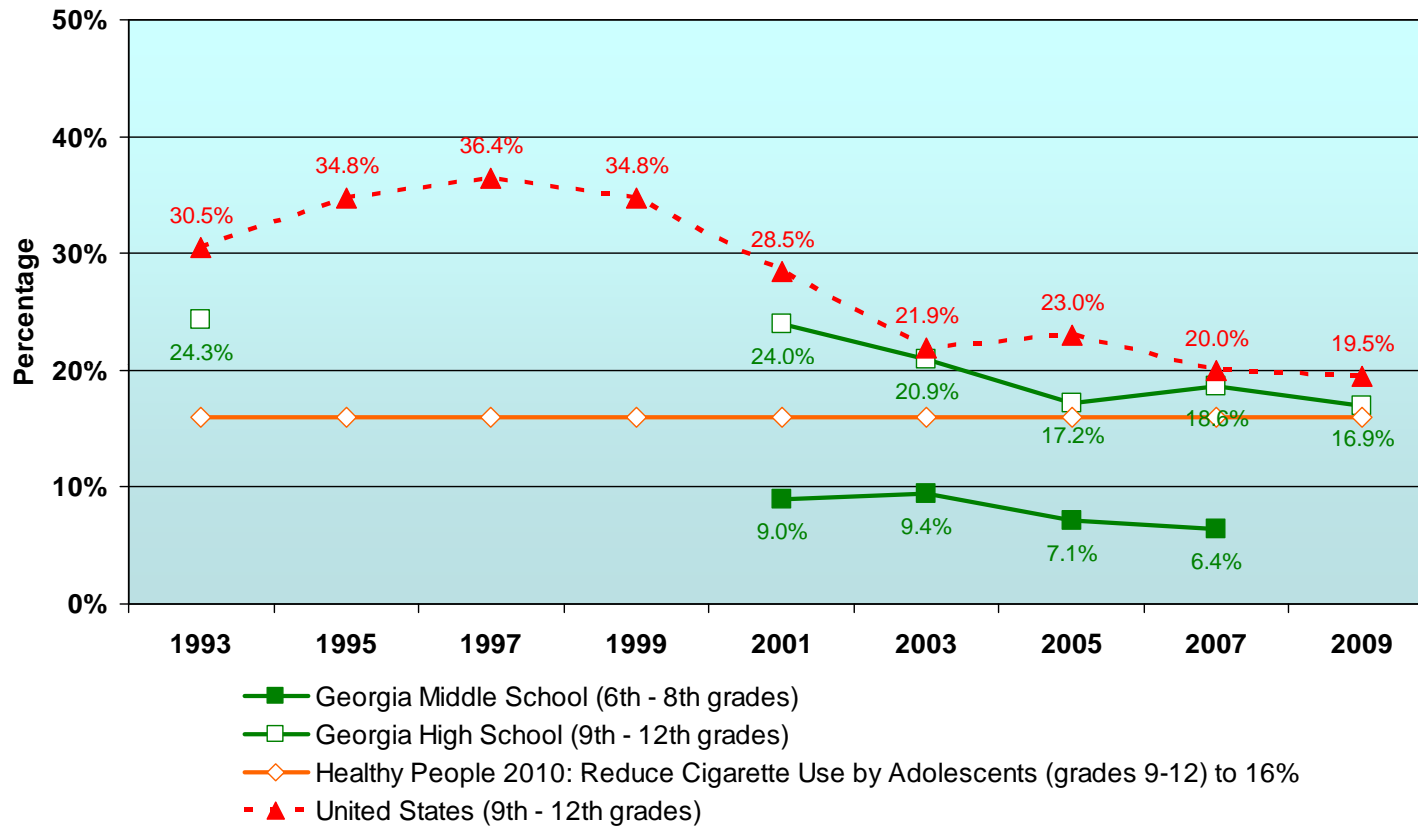
Age-Adjusted¹ Lung Cancer Mortality Rates, U.S. and Georgia, 1994-2008



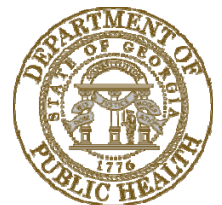
¹Age-Adjusted to the 2000 Standard Million.



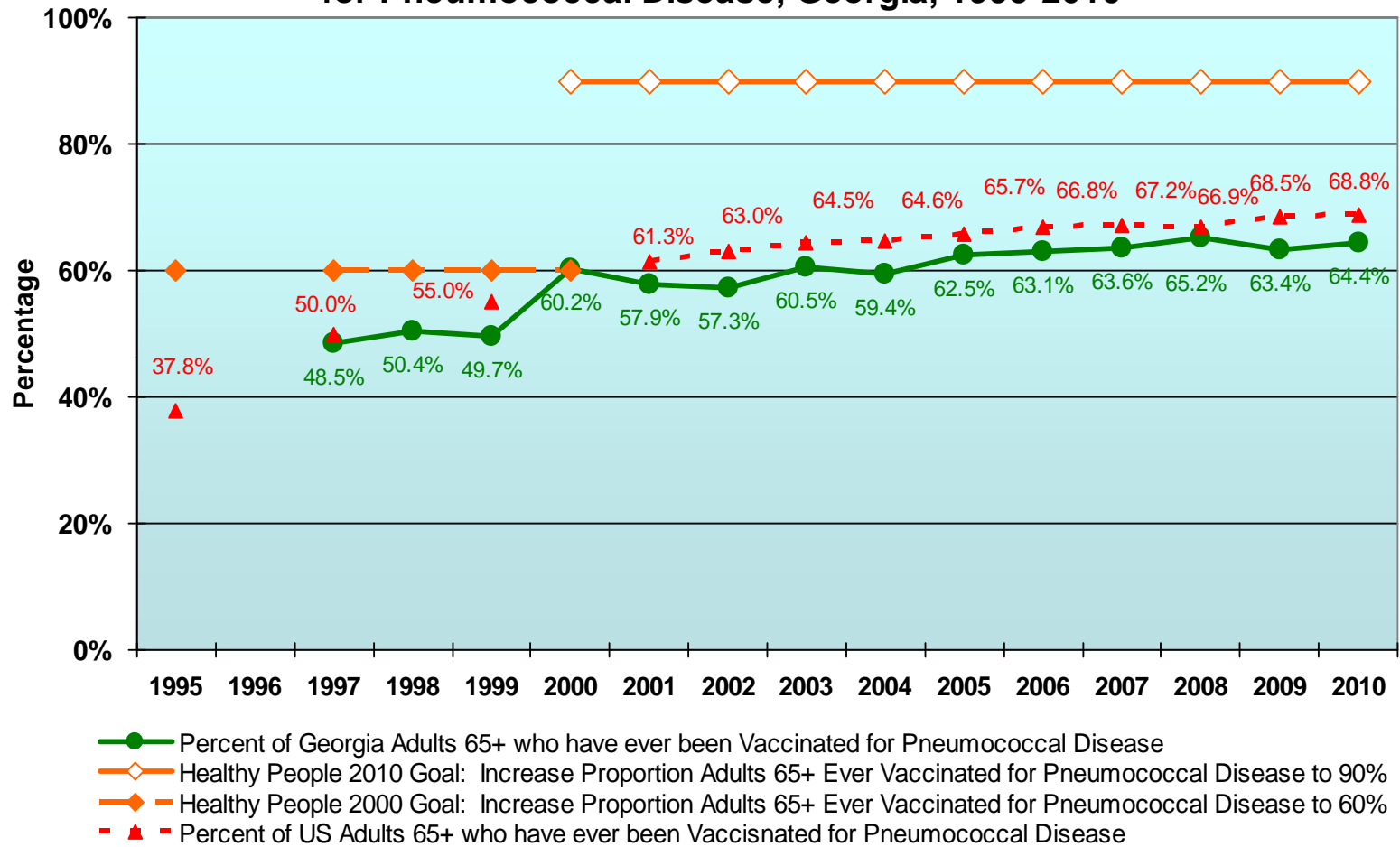
Percentage of Middle and High School Students Who Smoke,¹ U.S. and Georgia, 1993-2009



¹Sources: Georgia Youth Risk Behavior Survey (YRBS)
Centers for Disease Control & Prevention, Youth Risk Behavior Survey, Trends in the Prevalence of Tobacco Use, National YRBS 1993-2007

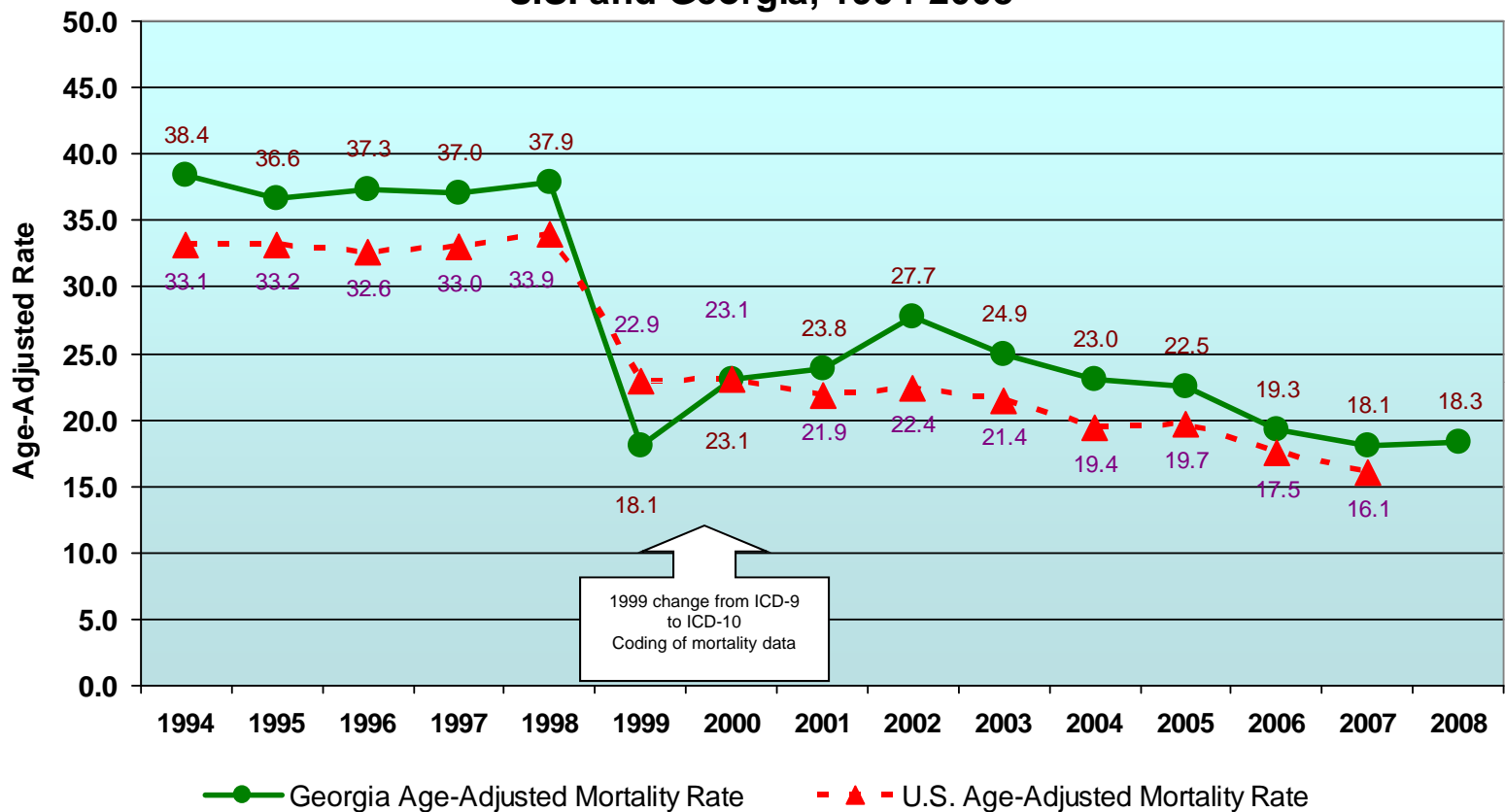


Percentage of Adults 65 Years of Age and Older, Ever Vaccinated for Pneumococcal Disease, Georgia, 1995-2010

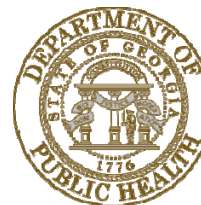


Source: Centers for Disease Control & Prevention, National Center for Chronic Disease Prevention and Health Promotion, Behavioral Risk Factor Surveillance System (BRFSS), <http://www.cdc.gov/BRFSS/>

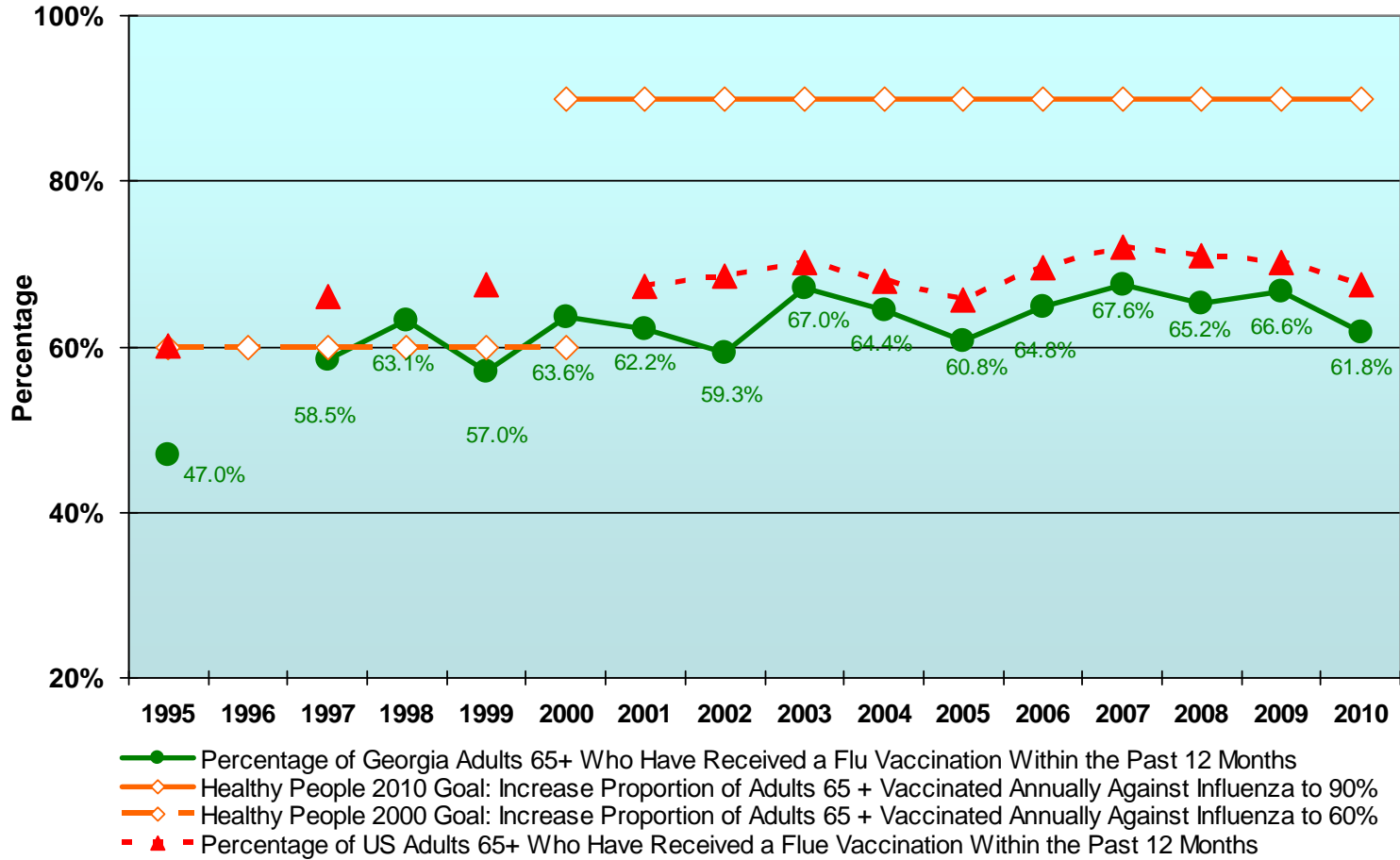
Age-Adjusted¹ Pneumonia Mortality Rates, U.S. and Georgia, 1994-2008



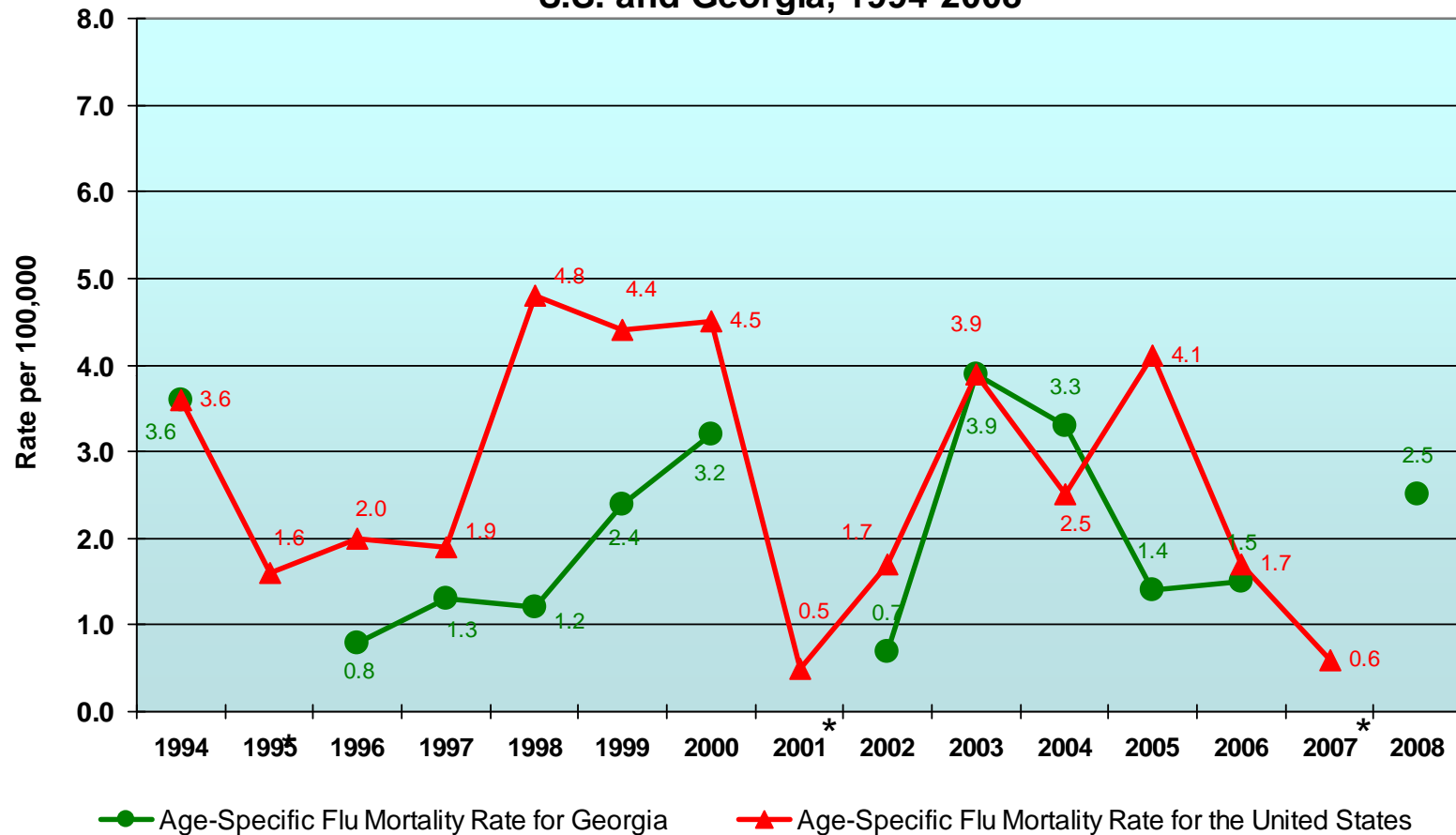
¹Age-Adjusted to the 2000 Standard Million.



Percentage of Adults 65+ Years of Age, Who Have Received a Flu Vaccination within the Past 12 Months, U.S. and Georgia, 1997-2010



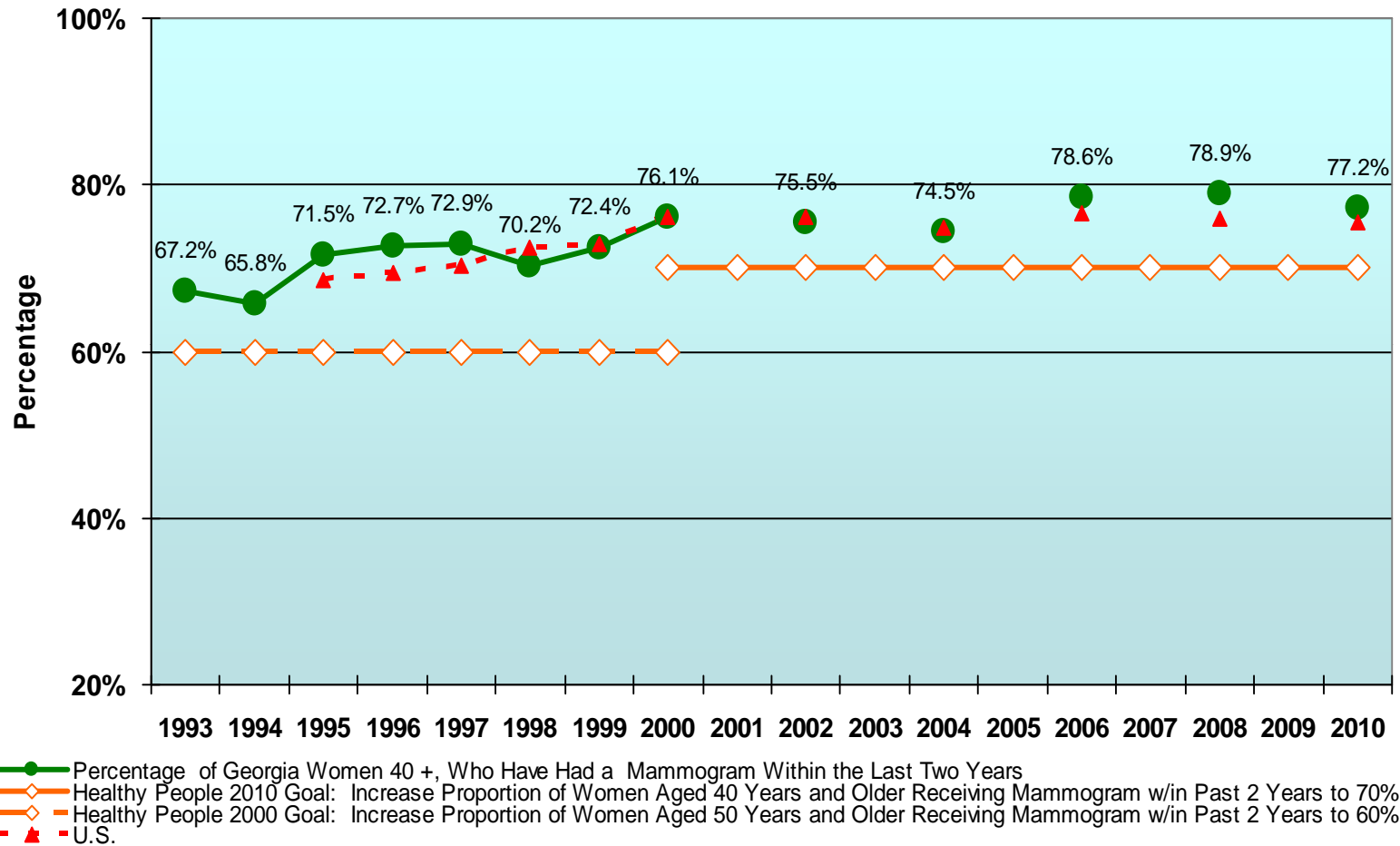
Age-Specific Influenza Mortality Rate, Adults 65+ Years of Age, U.S. and Georgia, 1994-2008



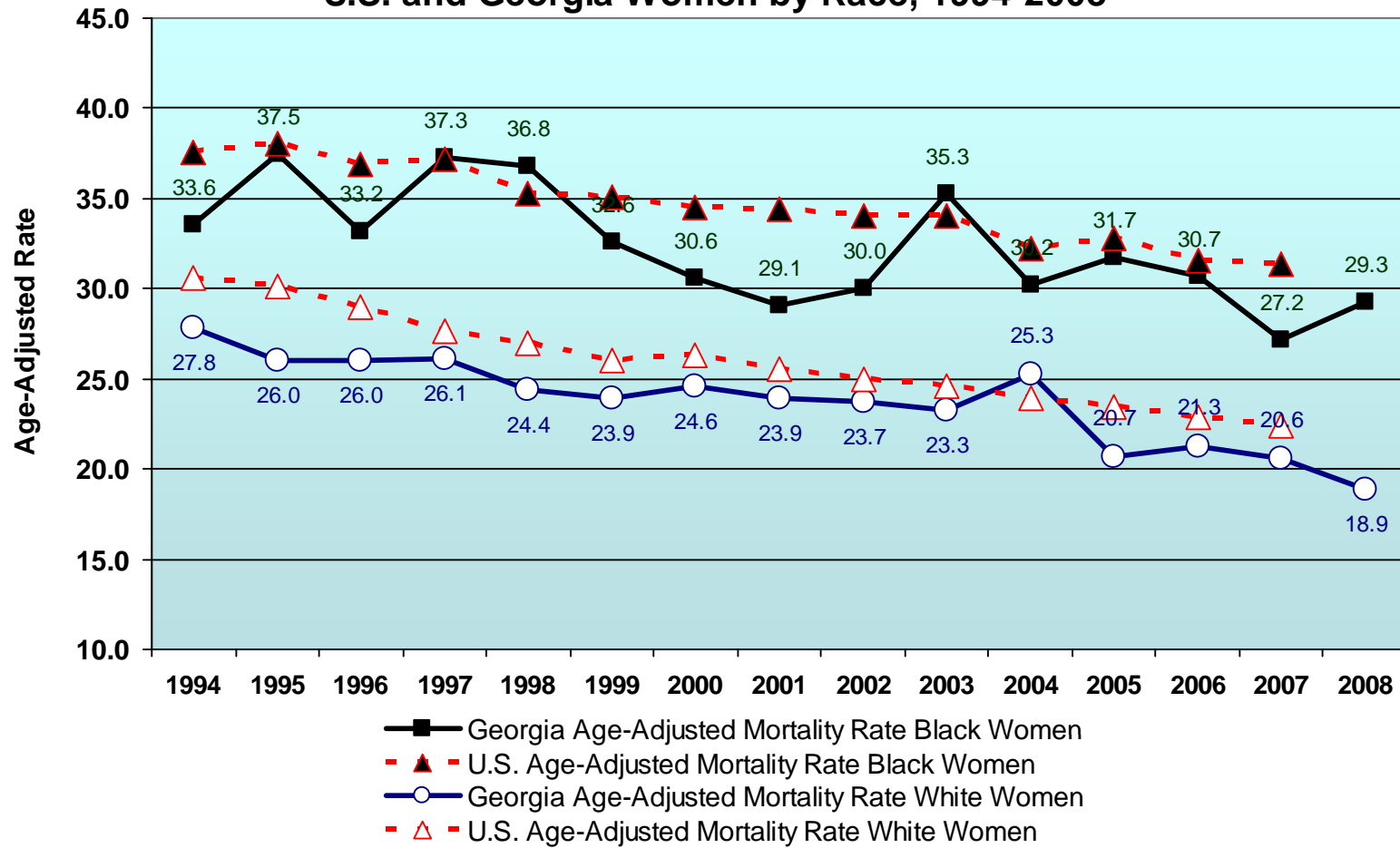
*GA rate not displayed due to < 5 events



Percentage of Women 40 Years of Age and Older, Who Have Received a Mammogram Within the Last Two Years, U.S. and Georgia, 1993-2010



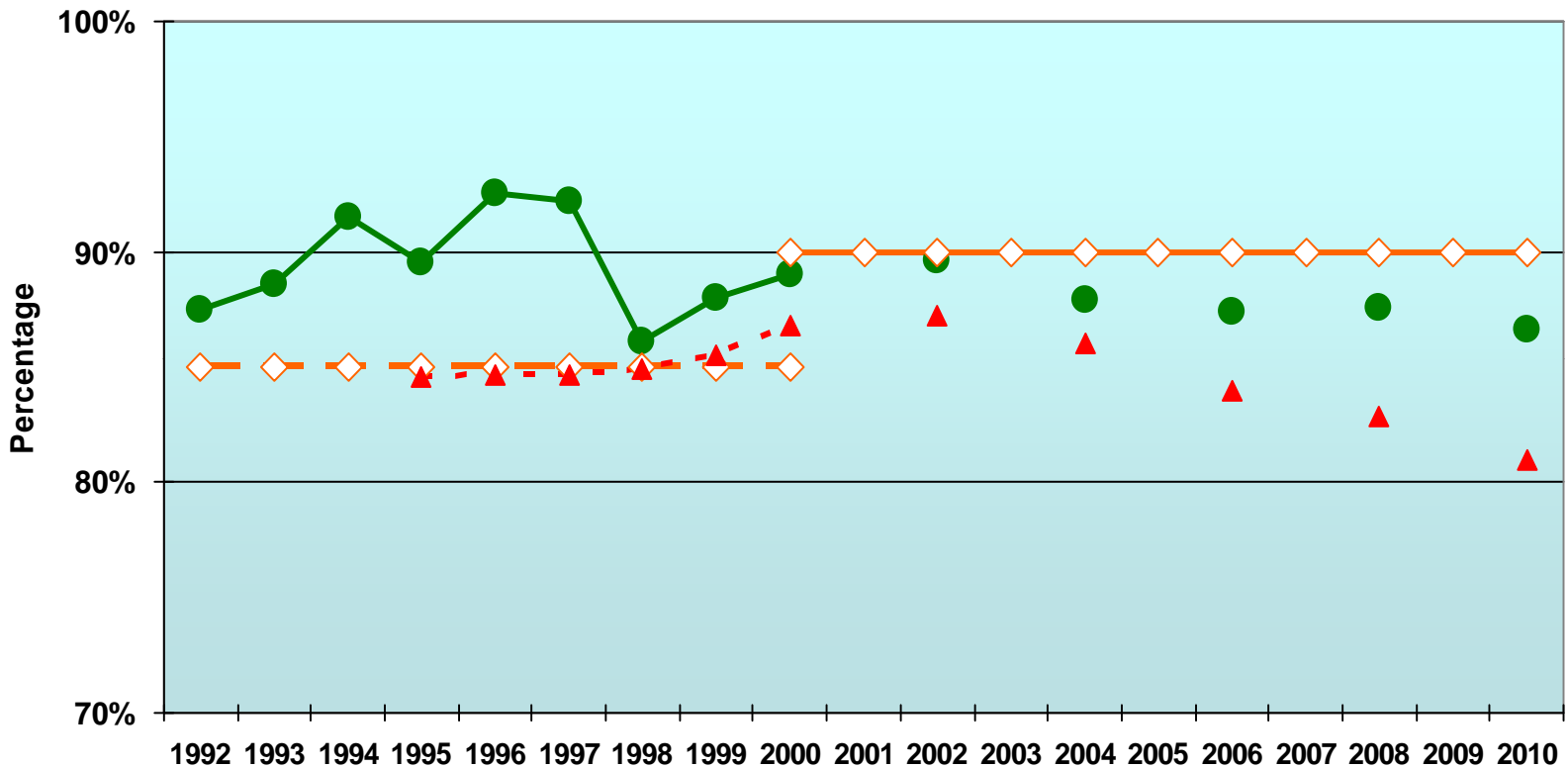
Age-Adjusted¹ Breast Cancer Mortality Rates, U.S. and Georgia Women by Race, 1994-2008



¹Age-Adjusted to the 2000 Standard Million.



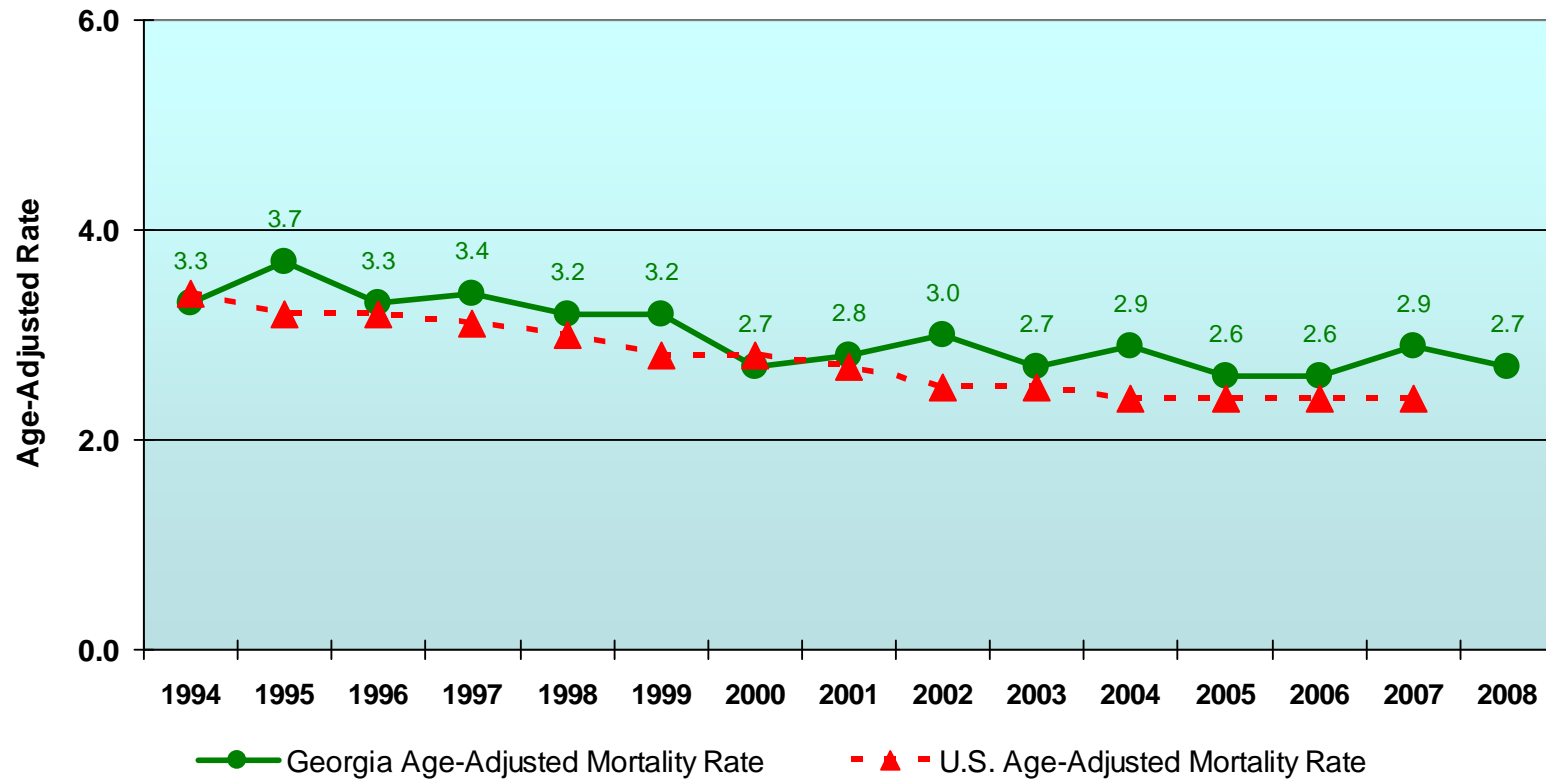
Percentage of Women 18 Years of Age and Older, who had a Pap Smear within the Last Three Years, U.S. and Georgia, 1992-2010



- Percentage Of Georgia Women 18+ Who Have Had a Pap Smear Within the Last Three Years
- ◇ Healthy People 2010 Goal: Increase Proportion of Women 18+ Who Receive Pap Testing within Last 3 Years to 90%
- ◇ Healthy People 2000 Goal: Increase Proportion of Women 18+ Who Receive Pap Testing within Last 3 Years to 85%
- ▲ U.S.



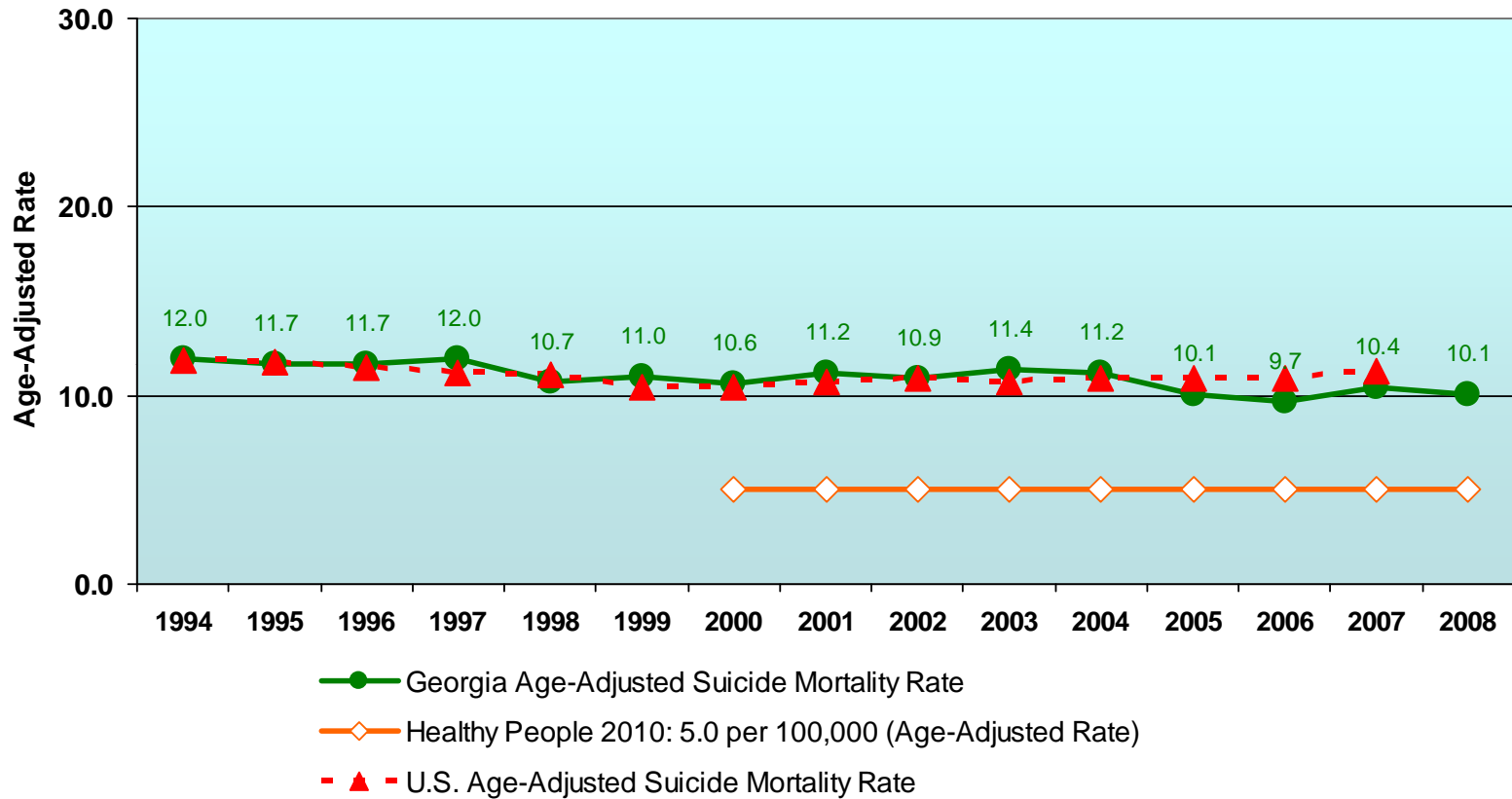
Age-Adjusted¹ Cervical Cancer Mortality Rates, U.S. and Georgia Women, 1994-2008



¹Age-Adjusted to the 2000 Standard Million.



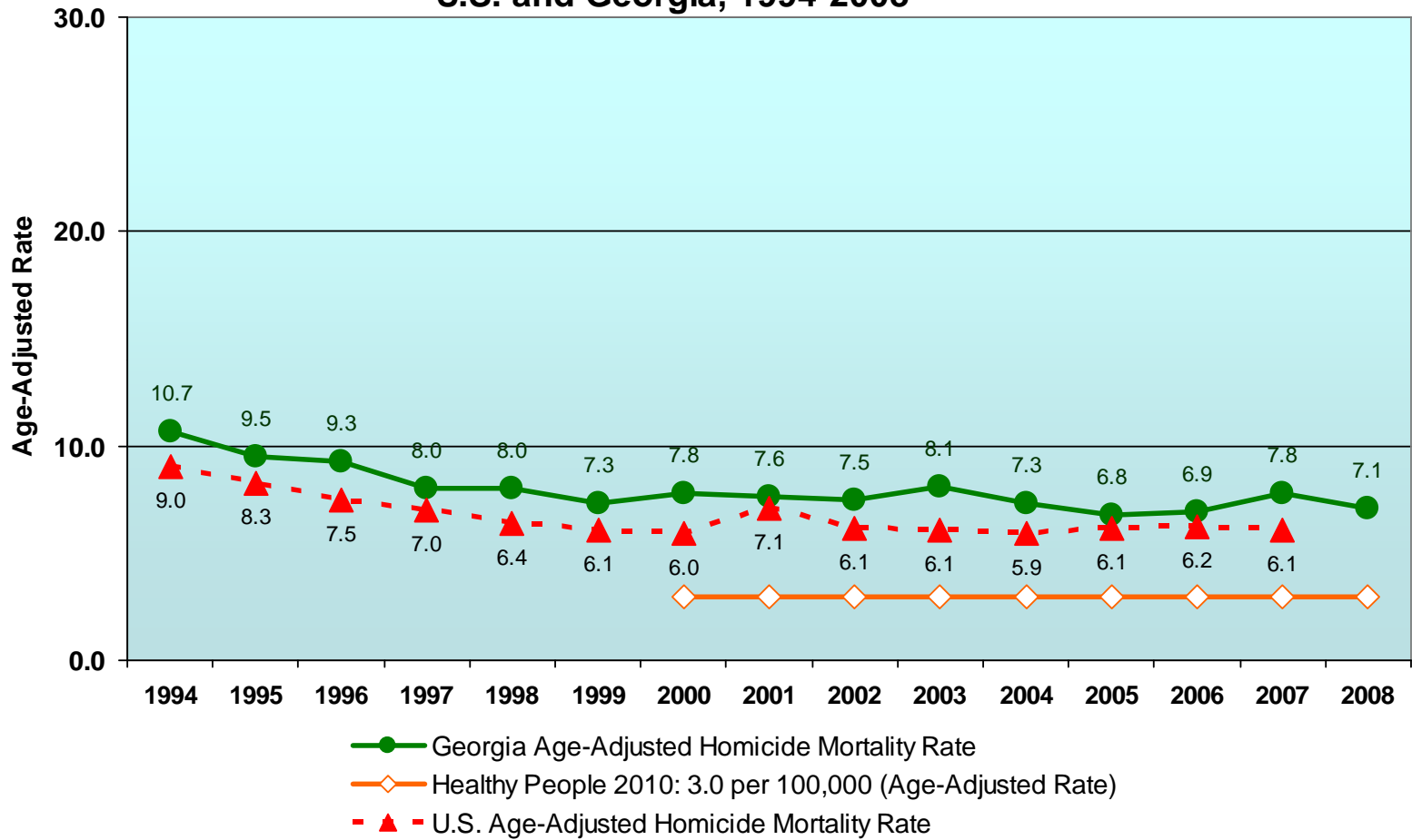
Age-Adjusted Suicide Mortality Rates,¹ U.S. and Georgia, 1994-2008



¹Age-Adjusted to the 2000 Standard Million. Suicide = ICD10 X60-X84, Y87.0 (ICD9 E950-E959)



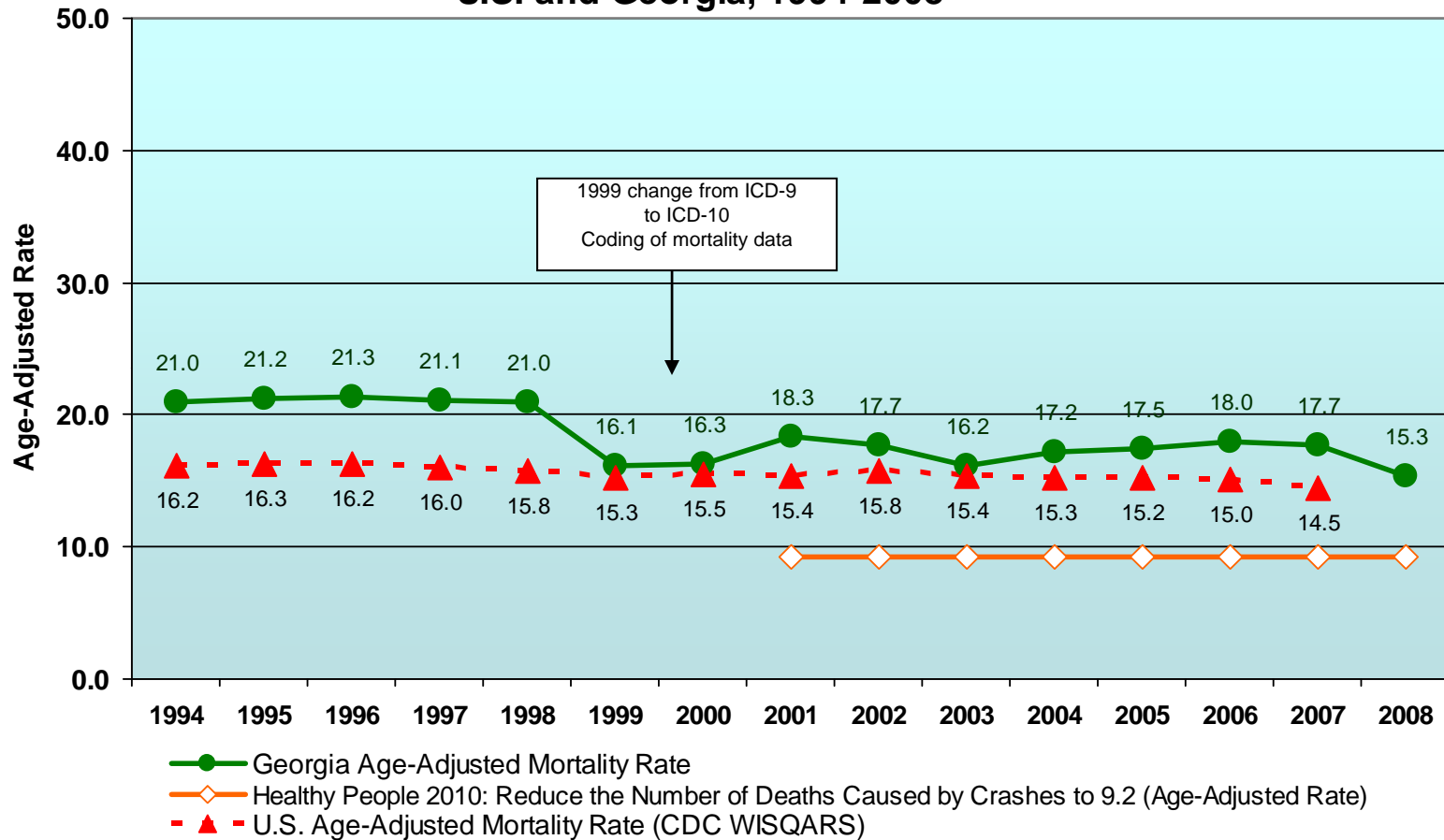
Age-Adjusted Homicide Mortality Rates,¹ U.S. and Georgia, 1994-2008



¹Age-Adjusted to the 2000 Standard Million. Homicide = ICD10 X85-Y09, Y87.1 (ICD9 E960-E969)



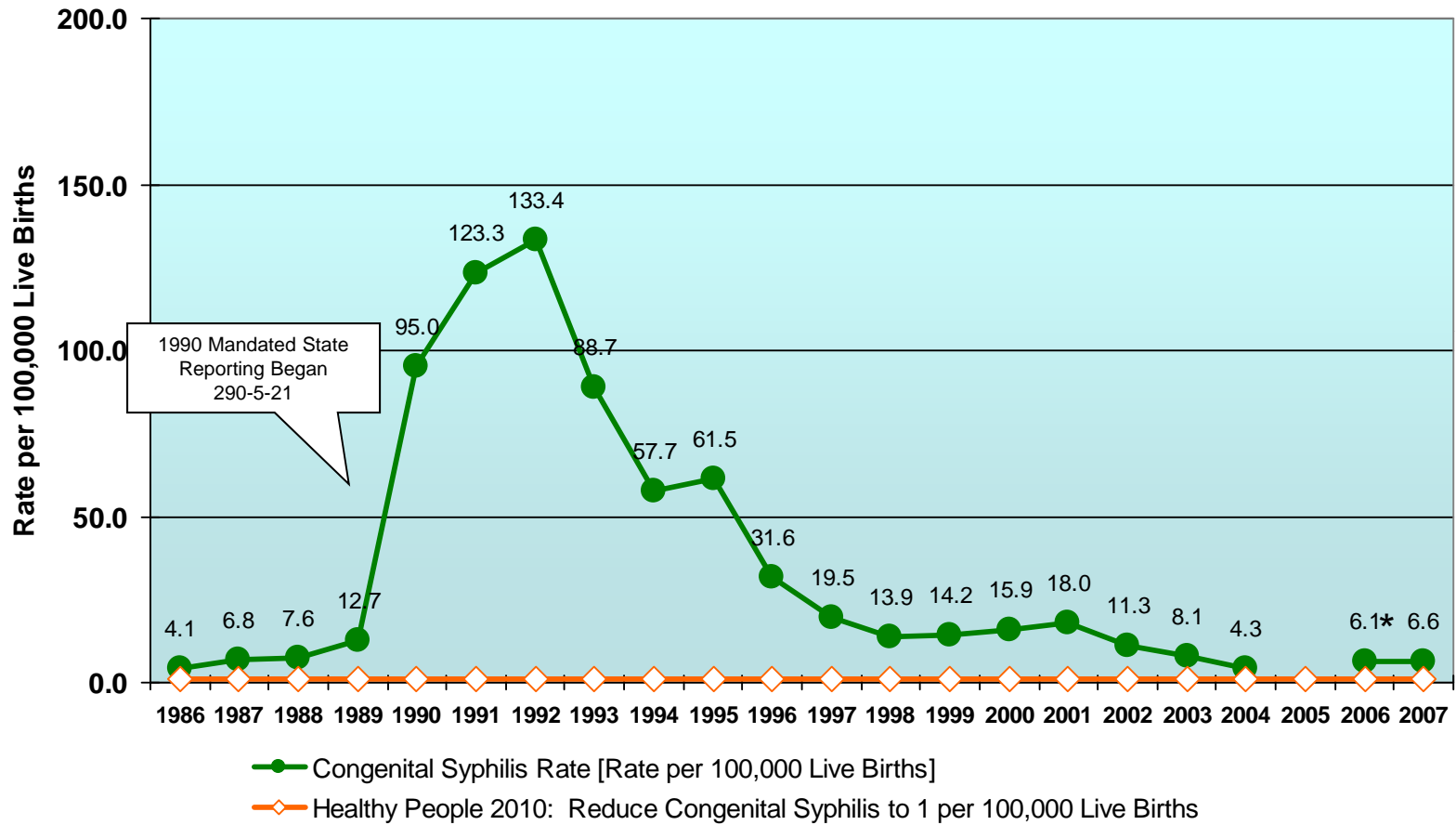
Age-Adjusted Motor Vehicle Crash Mortality Rates,¹ U.S. and Georgia, 1994-2008



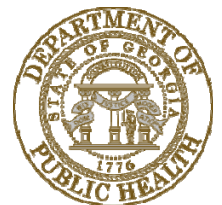
¹Age-Adjusted to the 2000 Standard Million.



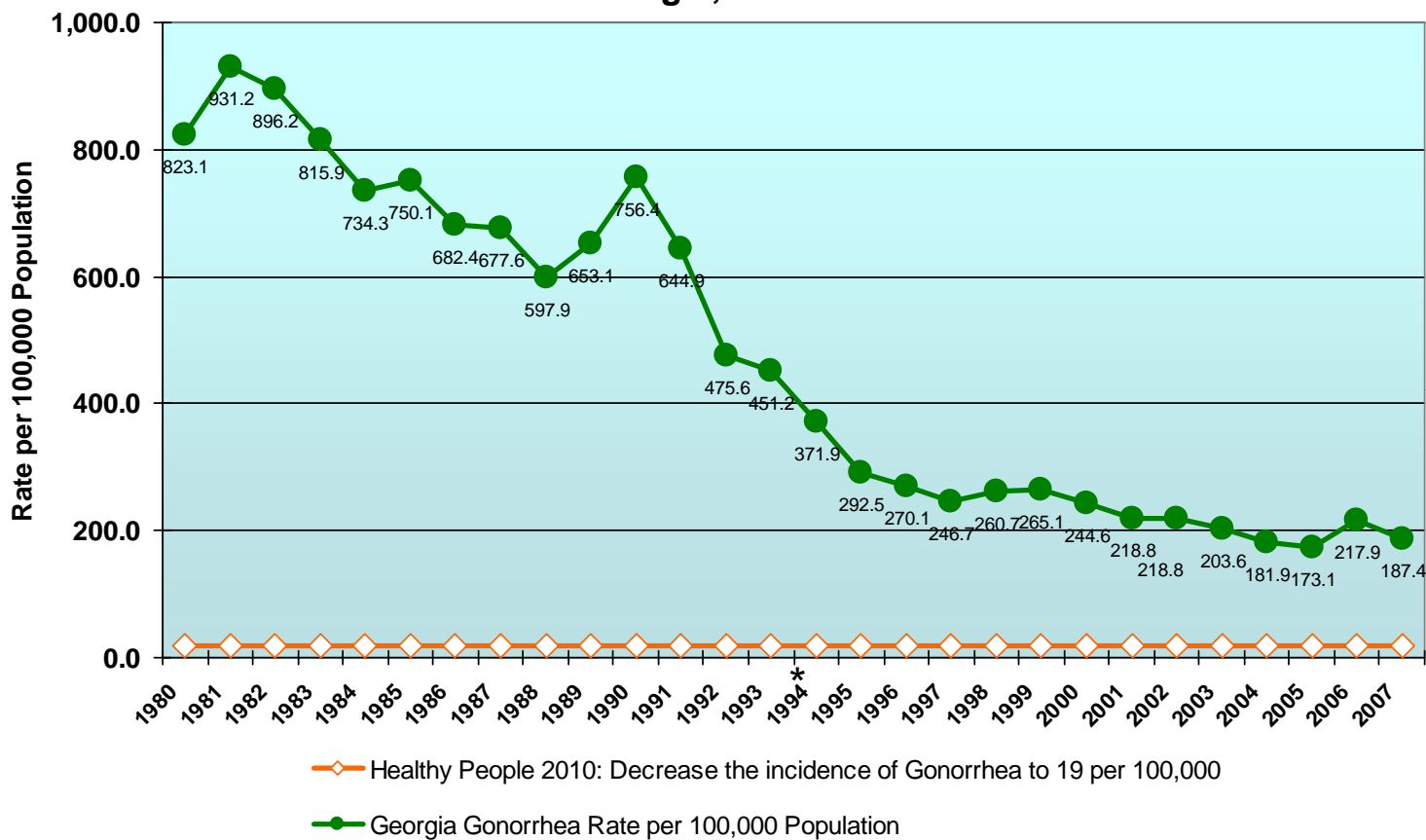
Rate of Newly Diagnosed Cases of Congenital Syphilis, Georgia, 1986-2007*



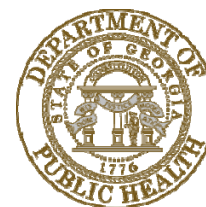
* Less than 5 events were reported for 2005, so no rate was calculated.



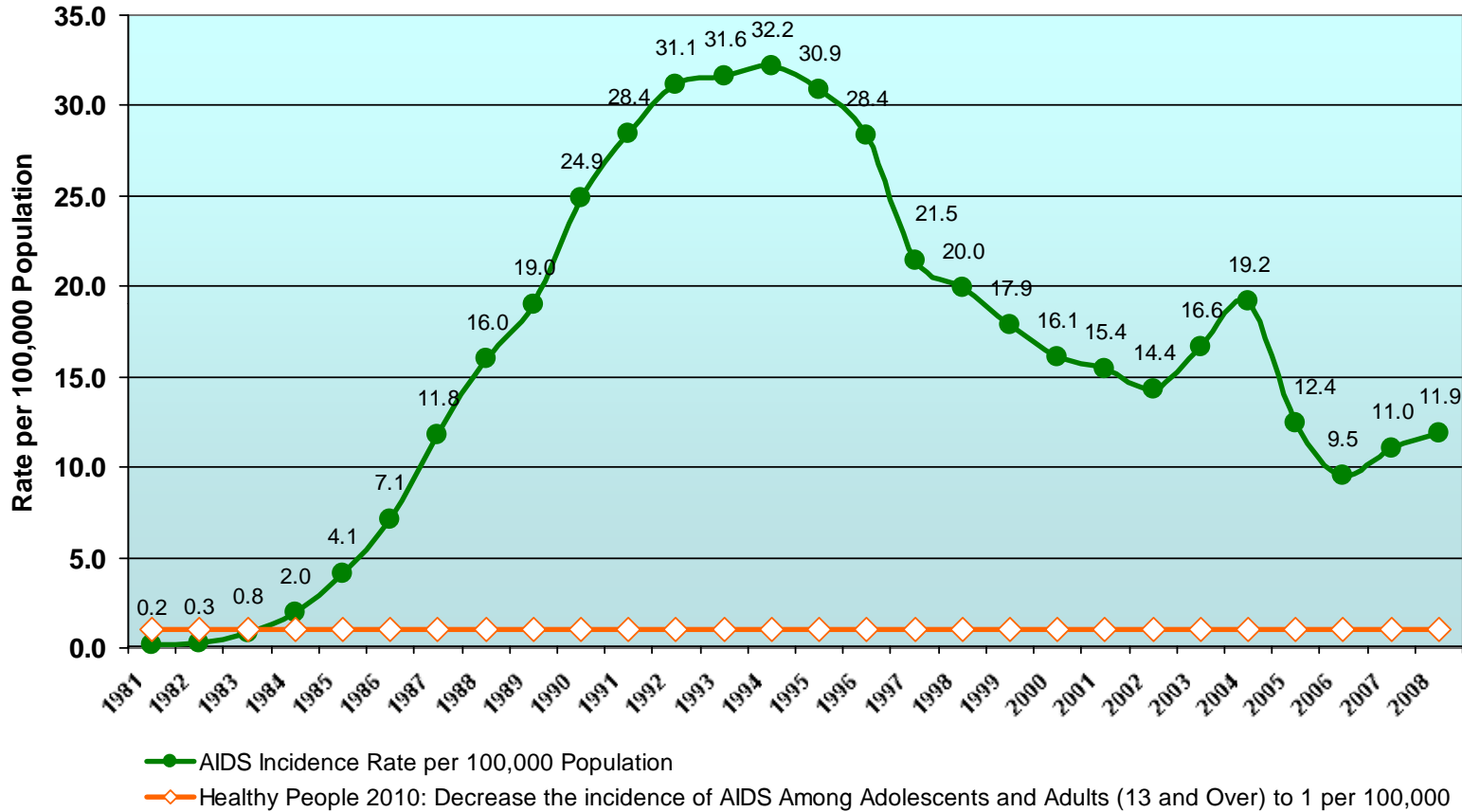
Rate of Newly Diagnosed Cases of Gonorrhea Georgia, 1980-2007*



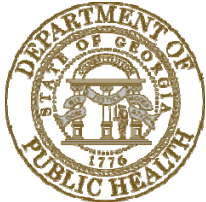
*Note: Data for 1994 are not available, rates presented are estimates.



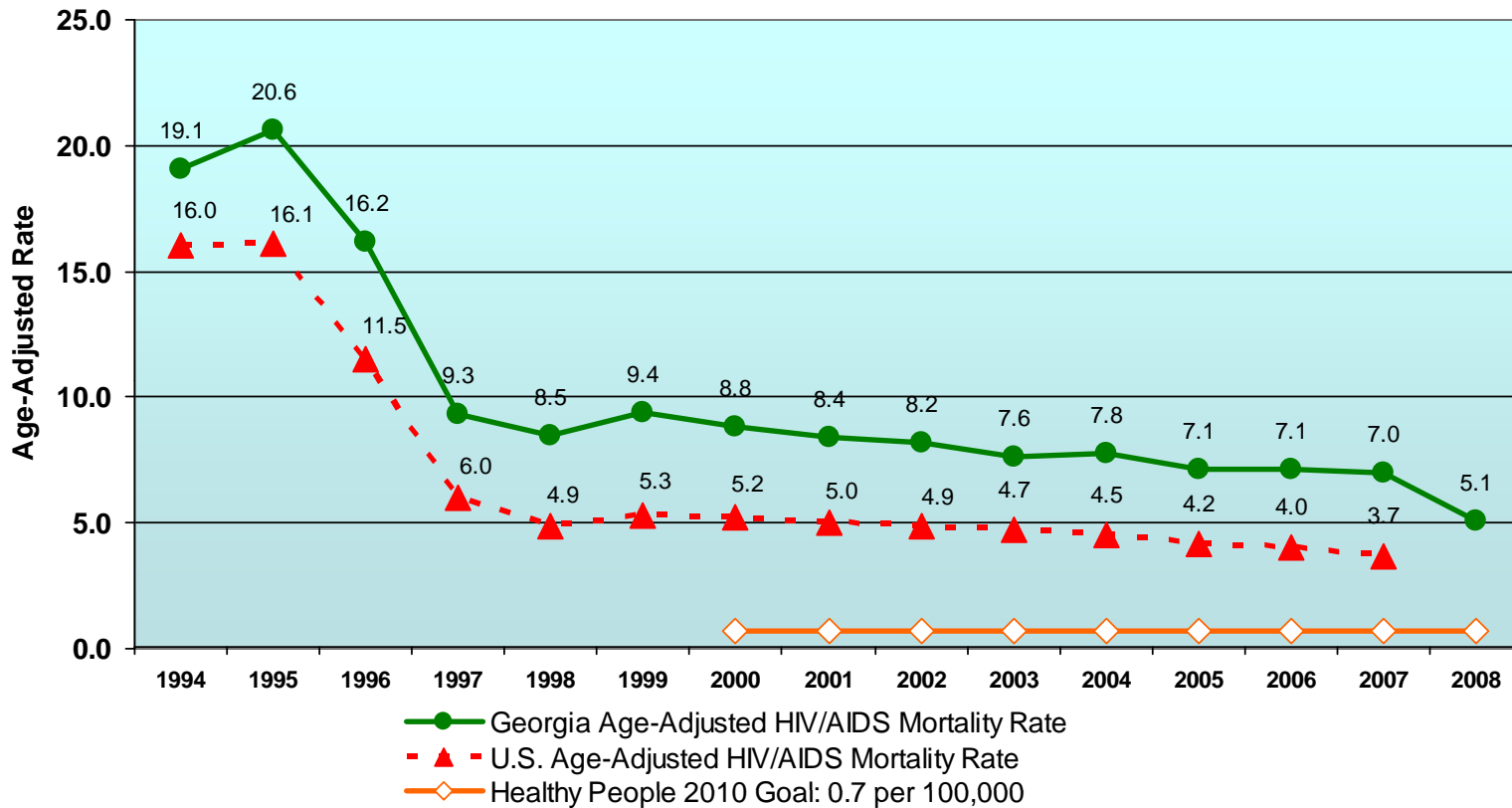
Rate of Newly Diagnosed AIDS Cases, Georgia, 1981-2008



NOTE: Mandated reporting began in 1985



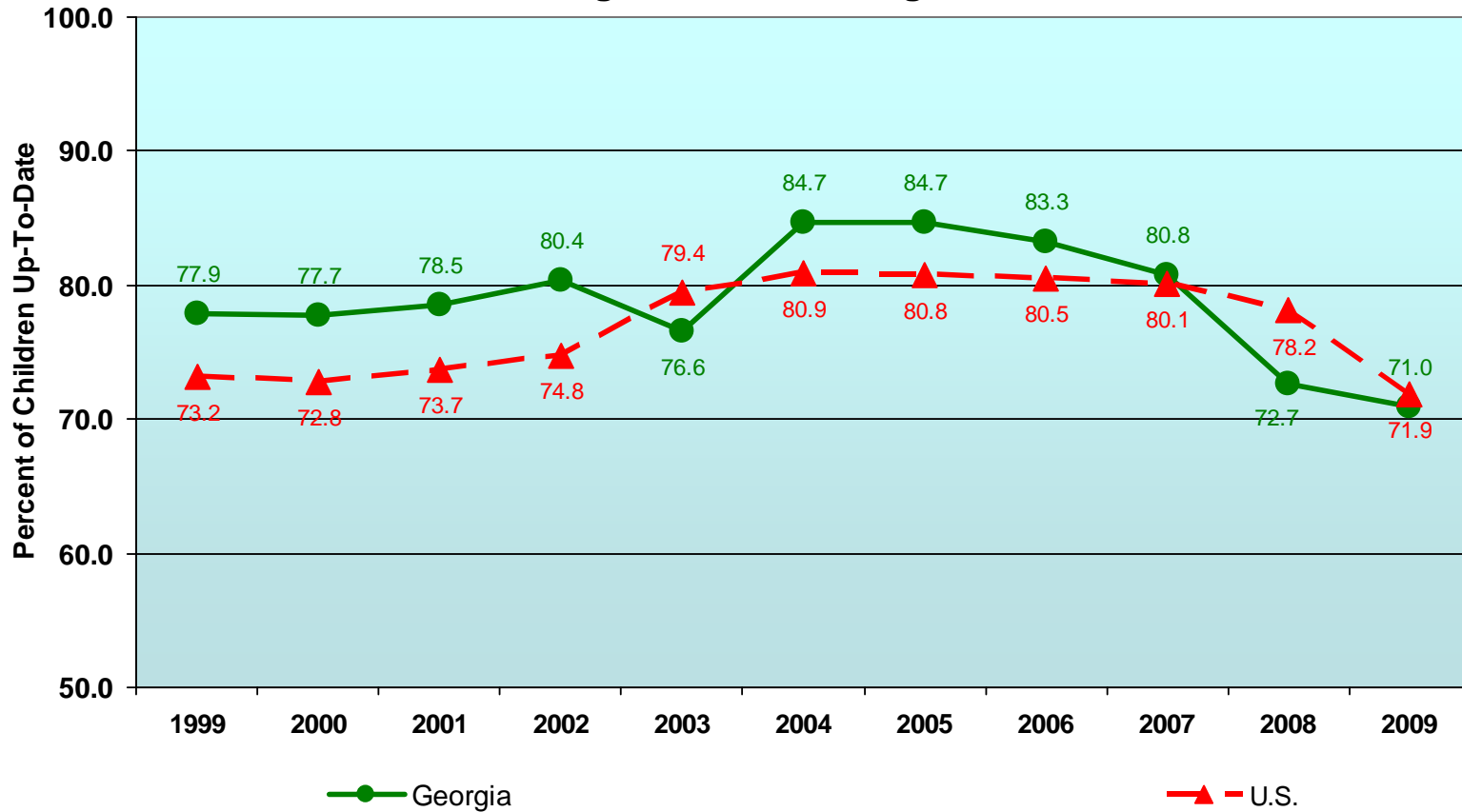
Age-Adjusted¹ Mortality Rate HIV/AIDS, U.S. and Georgia, 1994-2008



¹Age-Adjusted to the 2000 Standard Million. HIV/AIDS = ICD10 B20.0-B24 (ICD9 042-044)



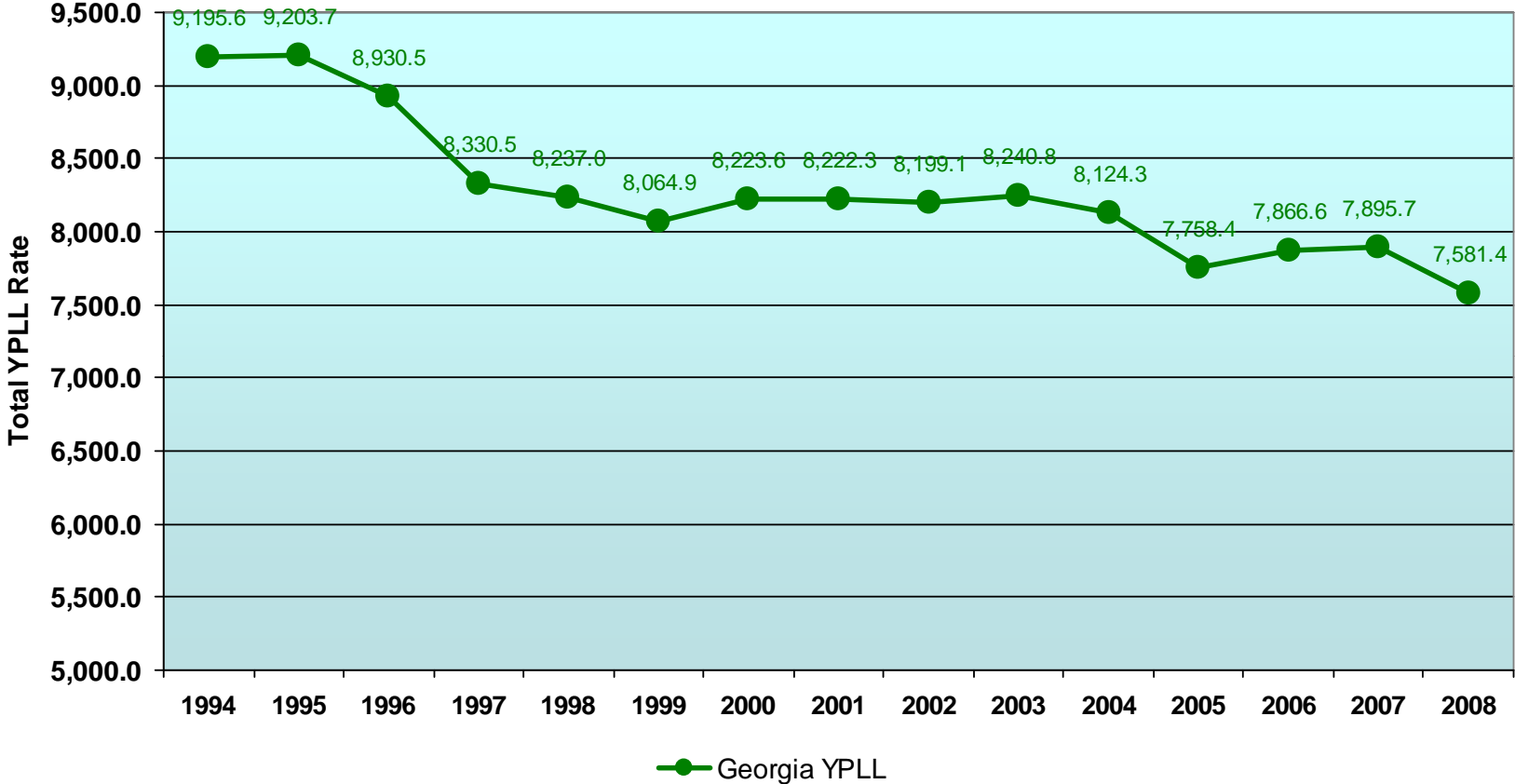
Immunization Coverage 4:3:1:3:3 Series, Among Children 19-35 Months of Age, U.S. and Georgia, 1999-2009



Vaccine	DTaP	Polio	MMR	HIB	Hep. B
Recommended Doses	4	3	1	3	3



Rate of Premature Death (Years of Potential Life Lost (YPLL)) from Any Cause, Georgia, 1994-2008

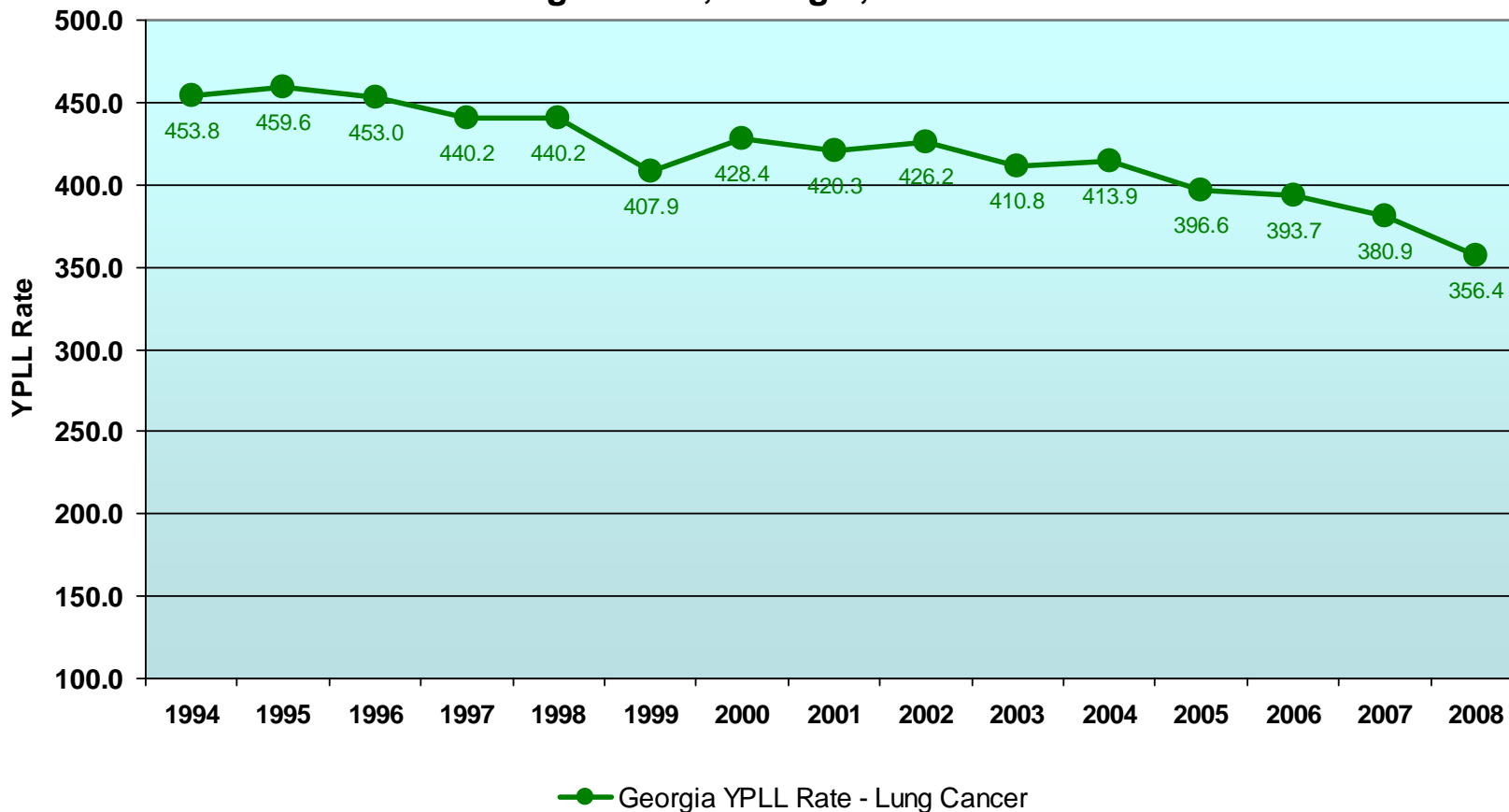


YPLL 75 represents the number of years of potential life lost due to death before age 75, as a measure of premature death. The YPLL 75 Rate is the years of potential life lost before age 75 that occur per 100,000 population less than 75 years of age.

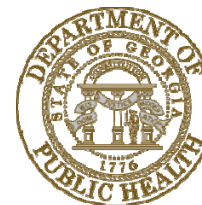


Source: Online Analytical Statistical Information System (OASIS). Georgia Department of Public Health, Office of Health Indicators for Planning (OHIP). <http://oasis.state.ga.us/>

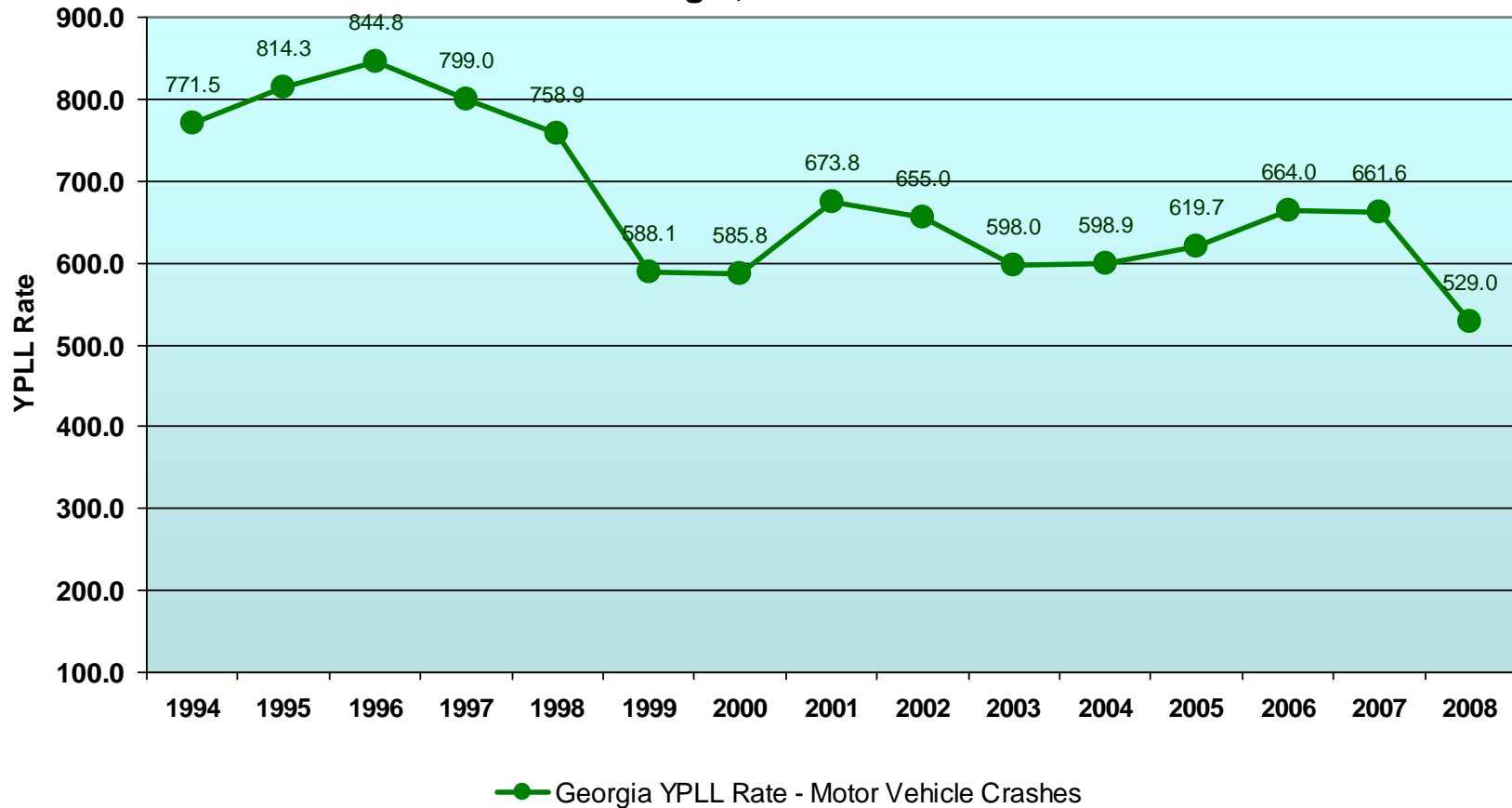
Rate of Premature Death (Years of Potential Life Lost (YPLL)) from Lung Cancer, Georgia, 1994-2008



YPLL 75 represents the number of years of potential life lost due to death before age 75, as a measure of premature death. The YPLL 75 Rate is the years of potential life lost before age 75 that occur per 100,000 population less than 75 years of age.



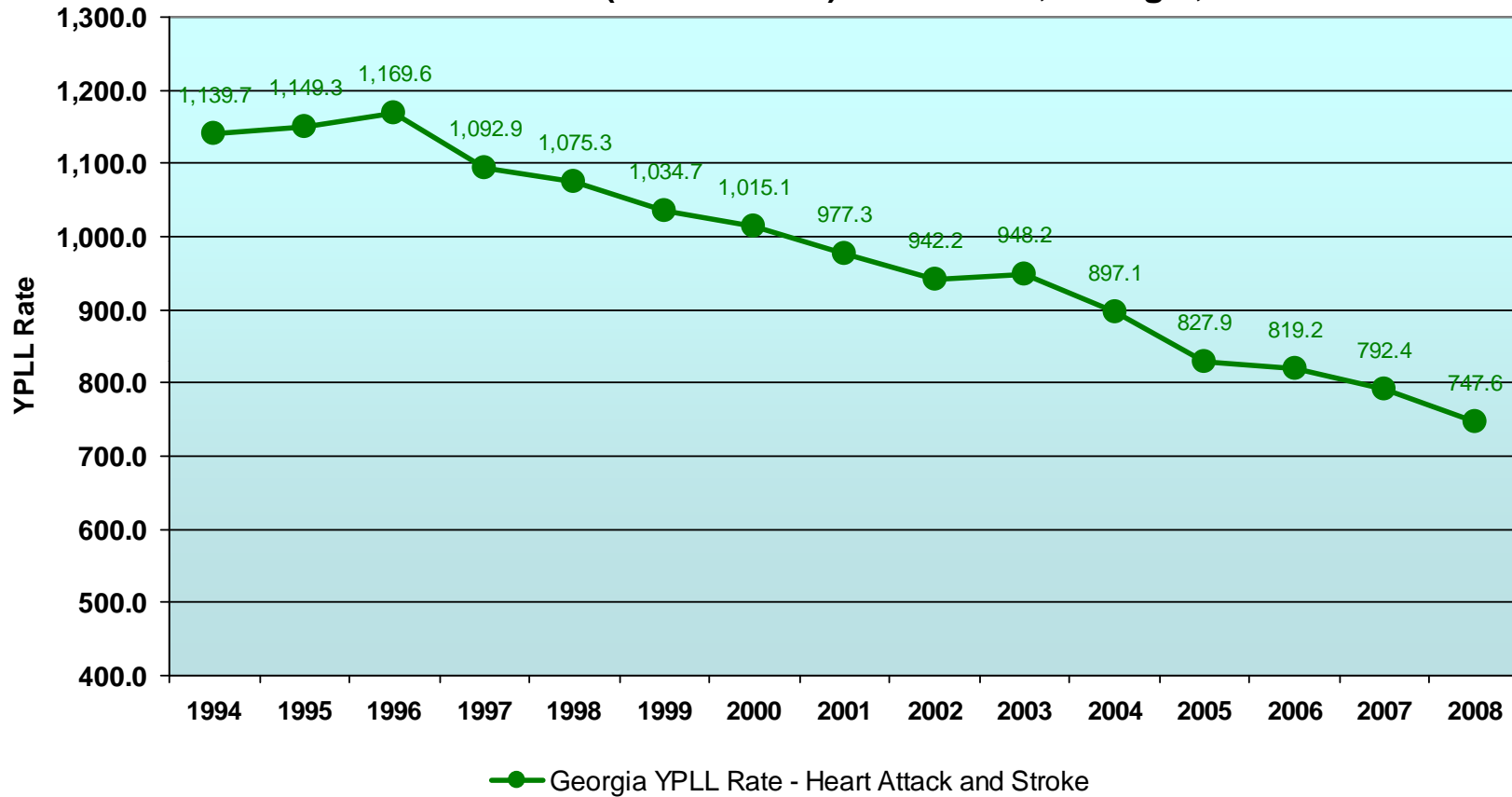
Rate of Years of Potential Life Lost (YPLL) from Motor Vehicle Crashes, Georgia, 1994-2008



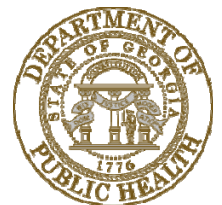
YPLL 75 represents the number of years of potential life lost due to death before age 75, as a measure of premature death. The YPLL 75 Rate is the years of potential life lost before age 75 that occur per 100,000 population less than 75 years of age.



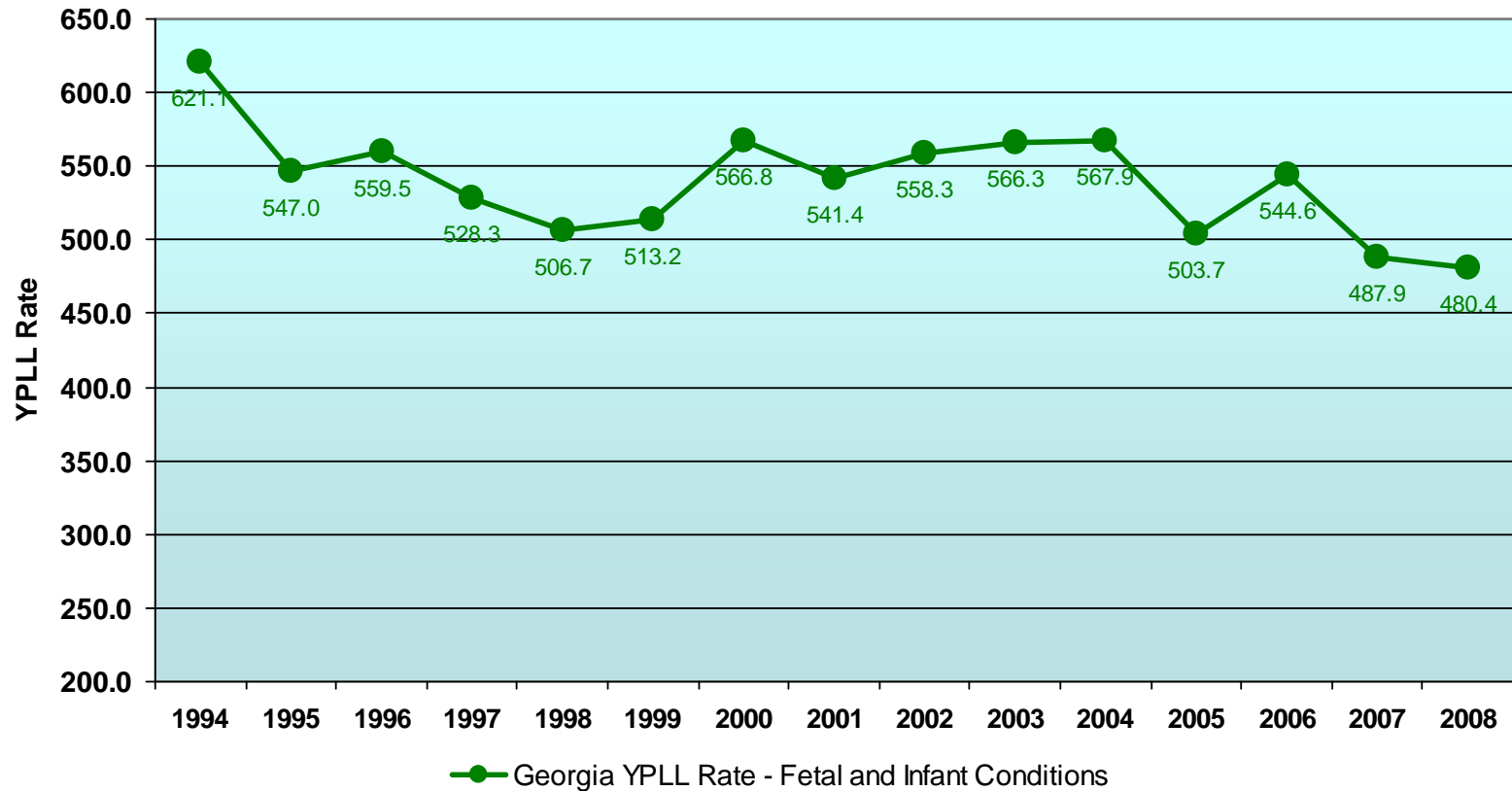
Rate of Premature Death (Years of Potential Life Lost (YPLL)) from Obstructive Heart Disease (Heart Attack) and Stroke, Georgia, 1994-2008



YPLL 75 represents the number of years of potential life lost due to death before age 75, as a measure of premature death. The YPLL 75 Rate is the years of potential life lost before age 75 that occur per 100,000 population less than 75 years of age.



Rate of Premature Death (Years of Potential Life Lost (YPLL)) from Conditions most associated with Low Birth Weight and Prematurity*, Georgia, 1994-2008



YPLL 75 represents the number of years of potential life lost due to death before age 75, as a measure of premature death. The YPLL 75 Rate is the years of potential life lost before age 75 that occur per 100,000 population less than 75 years of age.

* Certain Conditions Originating in the Perinatal Period . ICD10 P00.0 - P96.9



*Prepared by the Office of Health Indicators for Planning (OHIP),
Georgia Department of Public Health.*

*Many health indicators used in this report reside in the Department's Health Information Repository,
and can be accessed online via the Online Analytical Statistical Information System (OASIS):*

<http://oasis.state.ga.us>

Please direct questions to (404) 657-2854 or ohip@dhr.state.ga.us

Healthy People 2010 information can be found online at <http://www.healthypeople.gov>

