



# GEORGIA PUBLIC HEALTH LABORATORY

## SERVICE MANUAL 201&



**GEORGIA PUBLIC HEALTH LABORATORY 2012 SERVICE MANUAL  
TABLE OF CONTENTS**

<b>I. Table of Contents.....</b>	<b><i>i,ii</i></b>
Director's Letter.....	<i>iii</i>
Organizational Chart.....	<i>iv</i>
Directory of Central and Regional Laboratories.....	<i>v</i>
<b>II. Diagnostic Laboratory Services</b>	
Microbiology Services Overview.....	<b>1</b>
Bacteriology	
<i>Bordetella Pertussis</i> .....	<b>2</b>
Chlamydia & Gonorrhea.....	<b>6</b>
Enteric Bacteriology.....	<b>10</b>
Foodborne Outbreaks.....	<b>14</b>
Streptococcus.....	<b>23</b>
Special Bacteriology.....	<b>25</b>
Immunology	
Infectious Disease.....	<b>29</b>
Mycobacteriology	
Mycobacteria.....	<b>37</b>
Parasitology	
Intestinal parasites.....	<b>41</b>
Blood and Tissue parasites.....	<b>44</b>
Miscellaneous.....	<b>47</b>
Virology	
Human Immunodeficiency Virus .....	<b>50</b>
HIV-1 Viral Load .....	<b>53</b>
Rabies.....	<b>56</b>
Virus Isolation and Identification.....	<b>60</b>
<b>III. Newborn Screening</b>	
Newborn Screening Introduction.....	<b>64</b>
Specimen Collection.....	<b>65</b>
<b>IV. Albany Regional Laboratory.....</b>	<b>70</b>
Blood Lead Testing.....	<b>71</b>
Chlamydia & Gonorrhea.....	<b>75</b>
Rabies.....	<b>80</b>
Syphilis.....	<b>83</b>
<b>V. Waycross Regional Laboratory.....</b>	<b>87</b>
Chlamydia & Gonorrhea.....	<b>88</b>
Intestinal Parasites.....	<b>93</b>
Rabies.....	<b>97</b>
Syphilis.....	<b>100</b>

## **VI. Operations**

Support Services.....	<b>104</b>
Specimen Collection Outfit.....	<b>109</b>
Laboratory Fees.....	<b>112</b>
Laboratory Information System.....	<b>113</b>
Scientific Services.....	<b>114</b>

## **VII. List of Laboratory Services**

### **VIII. Laboratory Forms**

- Bacteriology
- Blood Lead
- Chemical Threat
- Immunology
- Molecular Biology
- Mycobacteriology
- Parasitology
- Rabies
- Virology
- Specimen Outfit Order Form (Decatur)
- Specimen Outfit Order Form (Albany)
- Specimen Outfit Order Form (Waycross)



Brenda Fitzgerald, M.D., Commissioner

Nathan Deal, Governor

2 Peachtree St NW, 15th Floor  
Atlanta, Georgia 30303-3142  
[www.health.state.ga.us](http://www.health.state.ga.us)

---

January, 2012

Dear Georgia Public Health Laboratory Customer:

We are pleased to provide you with the new revision of the “Laboratory Service Manual” for the Georgia Public Health Laboratory (GPHL). We have included material about additions to our service menu and changes in the way we provide services. For those of you who have Internet access, the Laboratory Service Manual is available on the Department of Public Health Web Site at

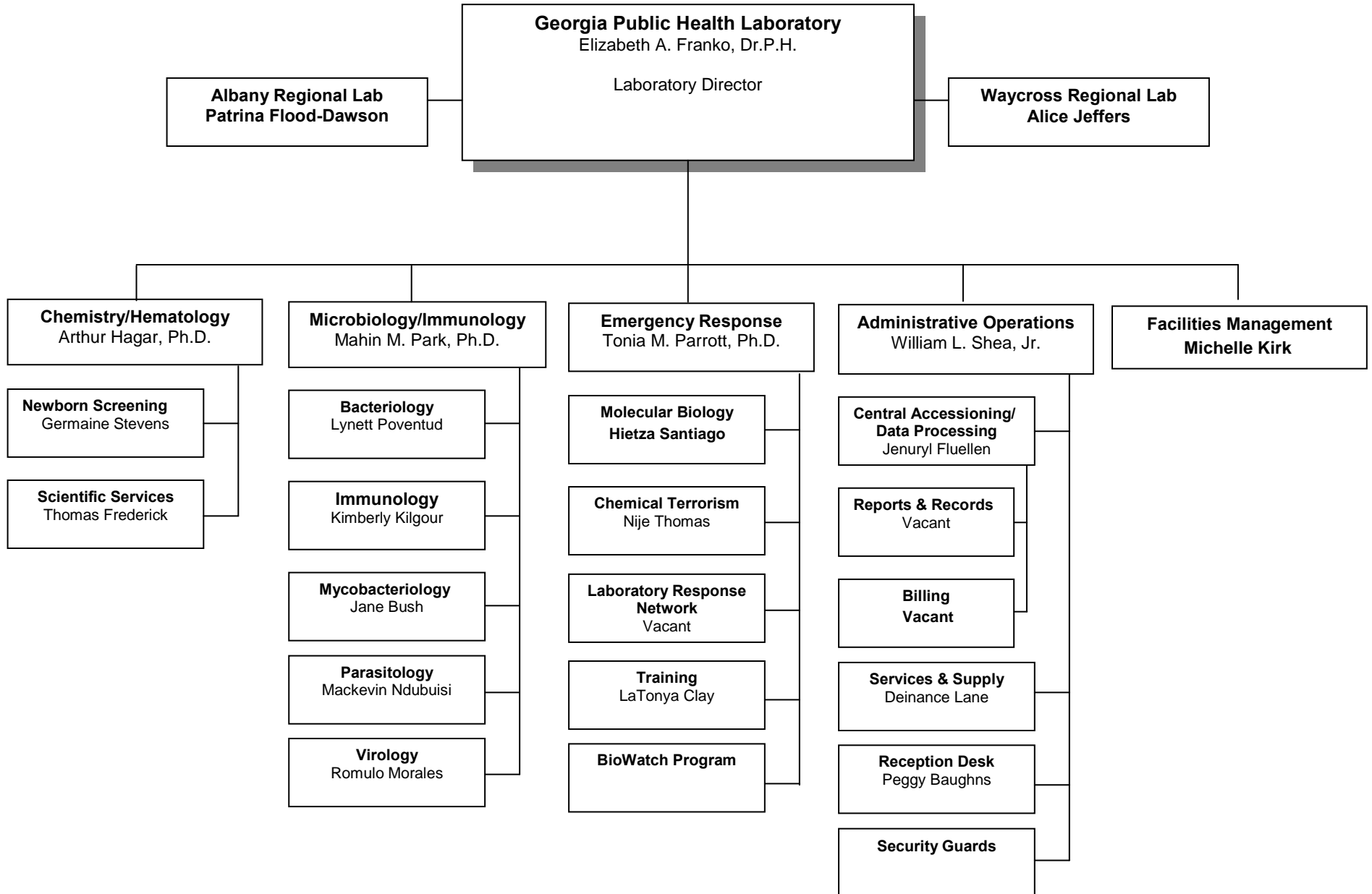
<http://health.state.ga.us/programs/lab/manual.asp>

If you have any questions or problems concerning the services provided by the Georgia Public Health Laboratory, please do not hesitate to contact me at 404/327-7900 or to call one of the Service Directors, Unit Supervisors or Managers listed in the following pages. As always, we solicit your comments and suggestions. Thank you for your continued, enthusiastic support of the Georgia Public Health Laboratory and our work on behalf of the citizens of Georgia.

Elizabeth A. Franko, DrPH, HCLD  
Director  
Georgia Public Health Laboratory

# Georgia Public Health Laboratory

April 1, 2010



## GEORGIA PUBLIC HEALTH LABORATORY BRANCHES

### Decatur Laboratory:

#### Georgia Public Health Laboratory

CLIA #11D0671793  
(*Specific Laboratory Unit*)  
1749 Clairmont Road  
Decatur, GA 30033-4050

### Regional Public Health Laboratories:

#### Albany Regional Laboratory

CLIA #11D0671770  
1109 N. Jackson Street  
Albany, GA. 31701-2022  
(229) 430-4122  
FAX (229) 430-2297

### Individual Units and Telephone Numbers:

Unit	Telephone
Administrative Office	(404) 327-7900
	FAX (404) 327-7919
Bacteriology	(404) 327-7990
Central Accessioning	(404) 321-2281
Laboratory Supply	(404) 327-7920
LIS Office	(404) 327-7931
Microbial Immunology	(404) 327-7970
Mycobacteriology	(404) 327-7941
Newborn Screening	(404) 327-7950
Parasitology	(404) 327-7960
Reports and Records	(404) 321-2240
Virology	(404) 327-7980

### Waycross Regional Laboratory

CLIA #11D0671837  
1751 Gus Karle Parkway  
Waycross, GA. 31503  
(912) 388-7050  
FAX (912) 338-7061

### Specimen Collection outfits:

Order outfits from the Laboratory Branch that will perform the test (see above). Mailing labels are pre-addressed to the branch providing the outfits.