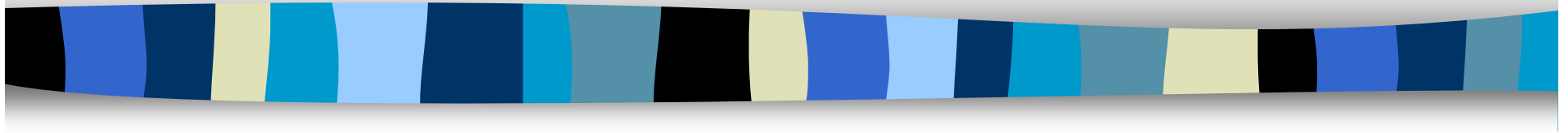


# Epidemiology of AIDS in Georgia



## HIV/AIDS Surveillance

Epidemiology Branch, Georgia Division of Public Health

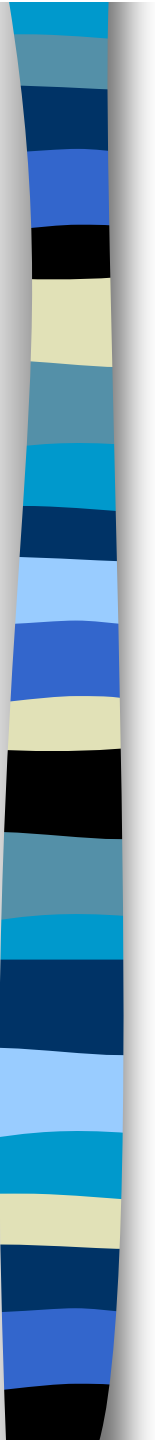
**Prepared September 2006 by Nicoline Collins, MPH**



# Overview

- About surveillance data
- National context
- Georgia HIV/AIDS epidemic
  - Trends in new AIDS diagnoses
  - Annual new HIV and AIDS diagnoses
  - Persons living with HIV and AIDS
- Summary

# Surveillance



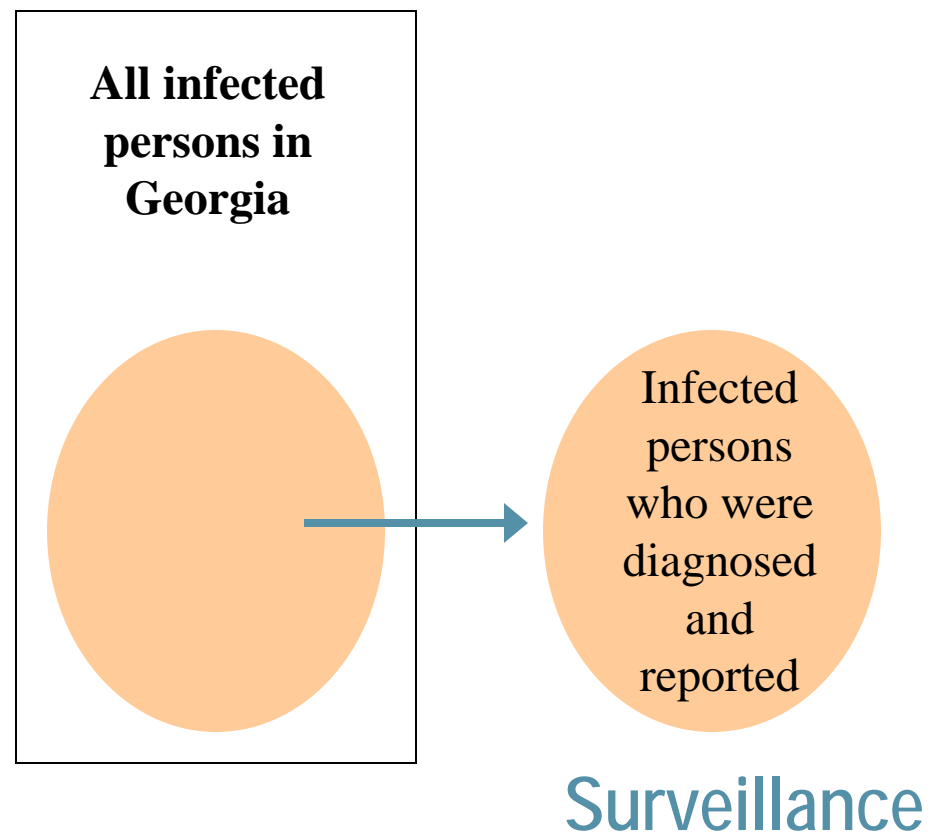
# History of HIV/AIDS Surveillance in Georgia

- AIDS case reporting began in early 1980s
  - Name-based
  - Case definition change in 1993
- HIV case reporting began in 2004
  - Name-based
  - Immature system
- Laboratory reporting began in 2004

# Georgia Reporting Requirements

- Who is required to report?
  - Diagnosing physician/facility
  - Treating physician/facility if new patient
  - Laboratory performing test(s)
- What needs to be reported?
  - Demographic and risk information
  - Clinical status and laboratory results
  - Treatment and services

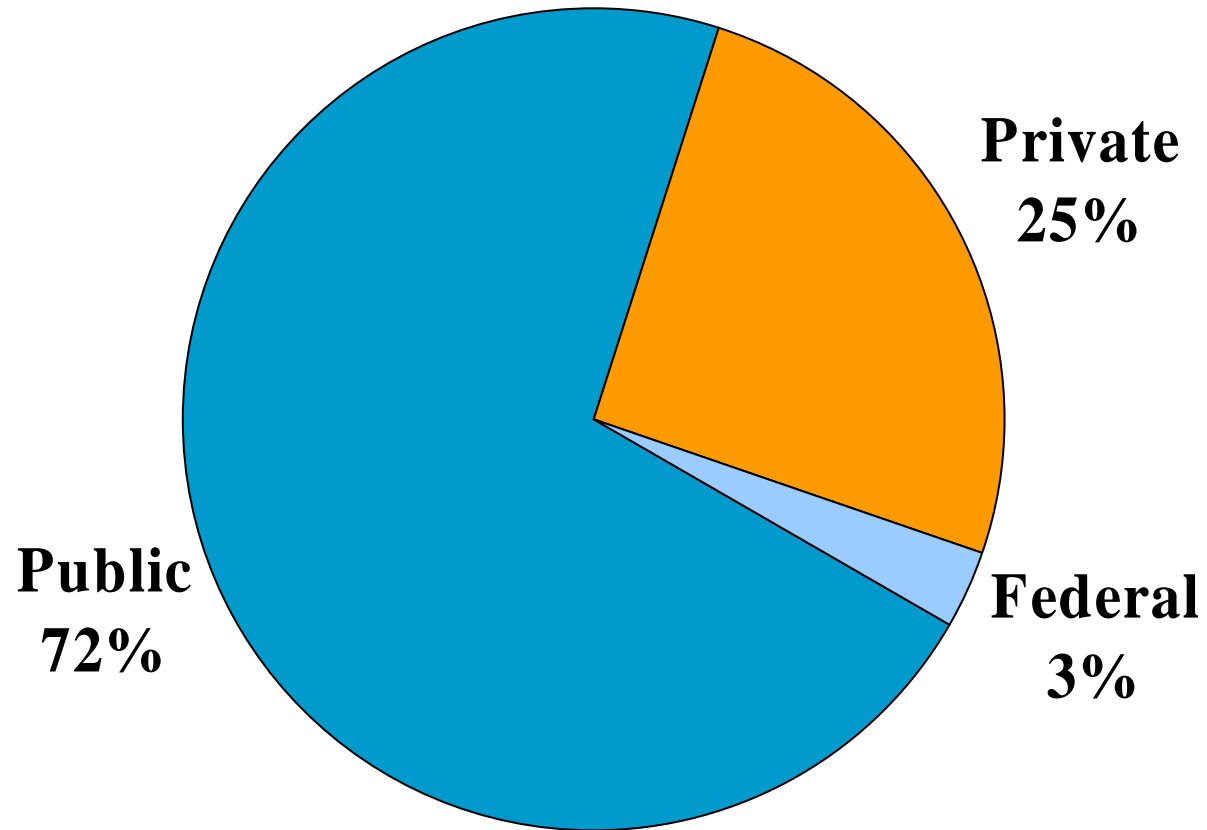
# Georgia HIV/AIDS Surveillance



# Interpreting Surveillance Data

- Factors that impact the data:
  - Testing behavior
  - Access to and use of medical care
  - Compliance with case reporting
  - Timeliness of case reporting
  - Changes in the surveillance system
- Factors affect observed numbers and trends

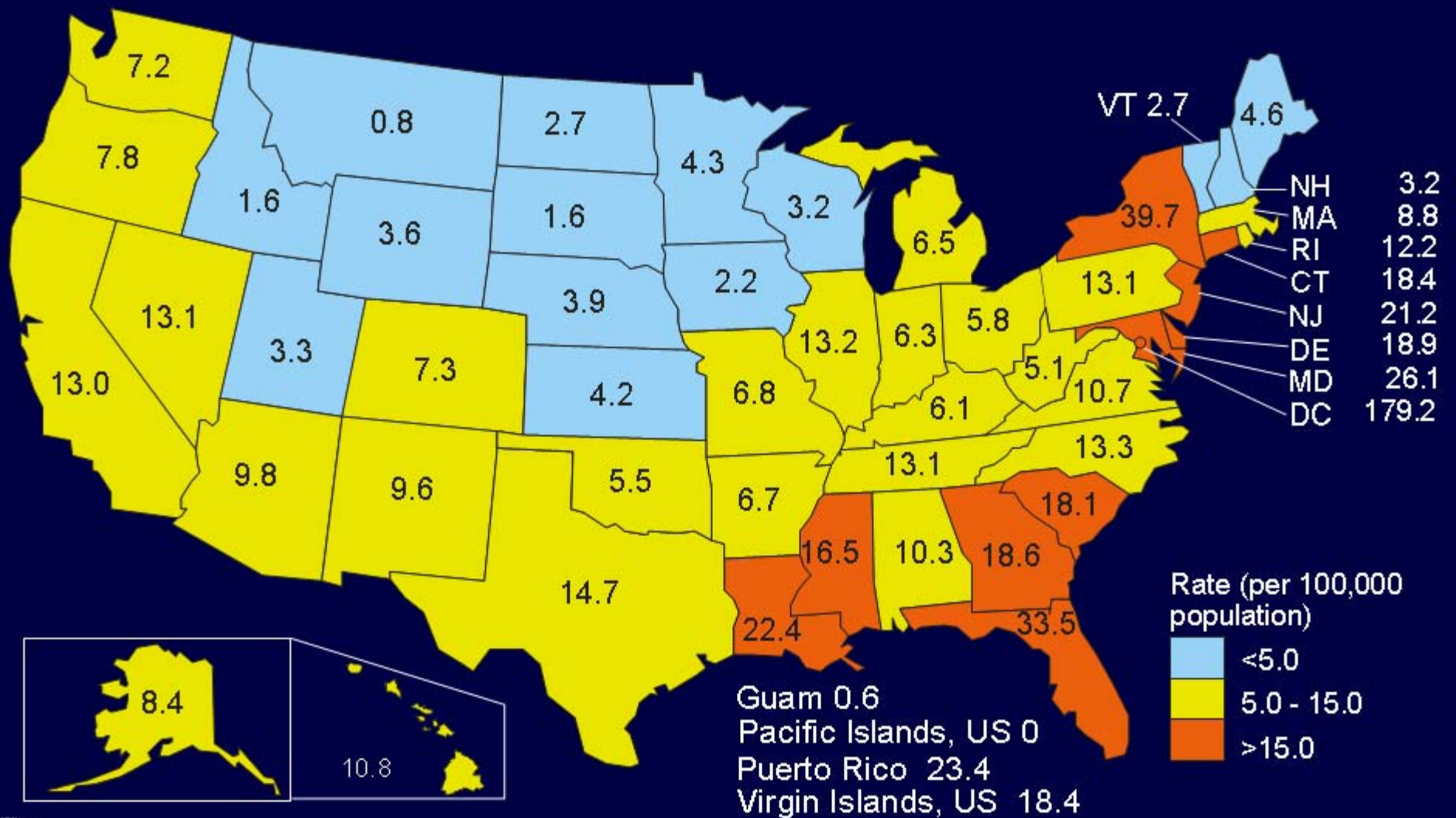
# Source of Case Reports Georgia, 2000-2004



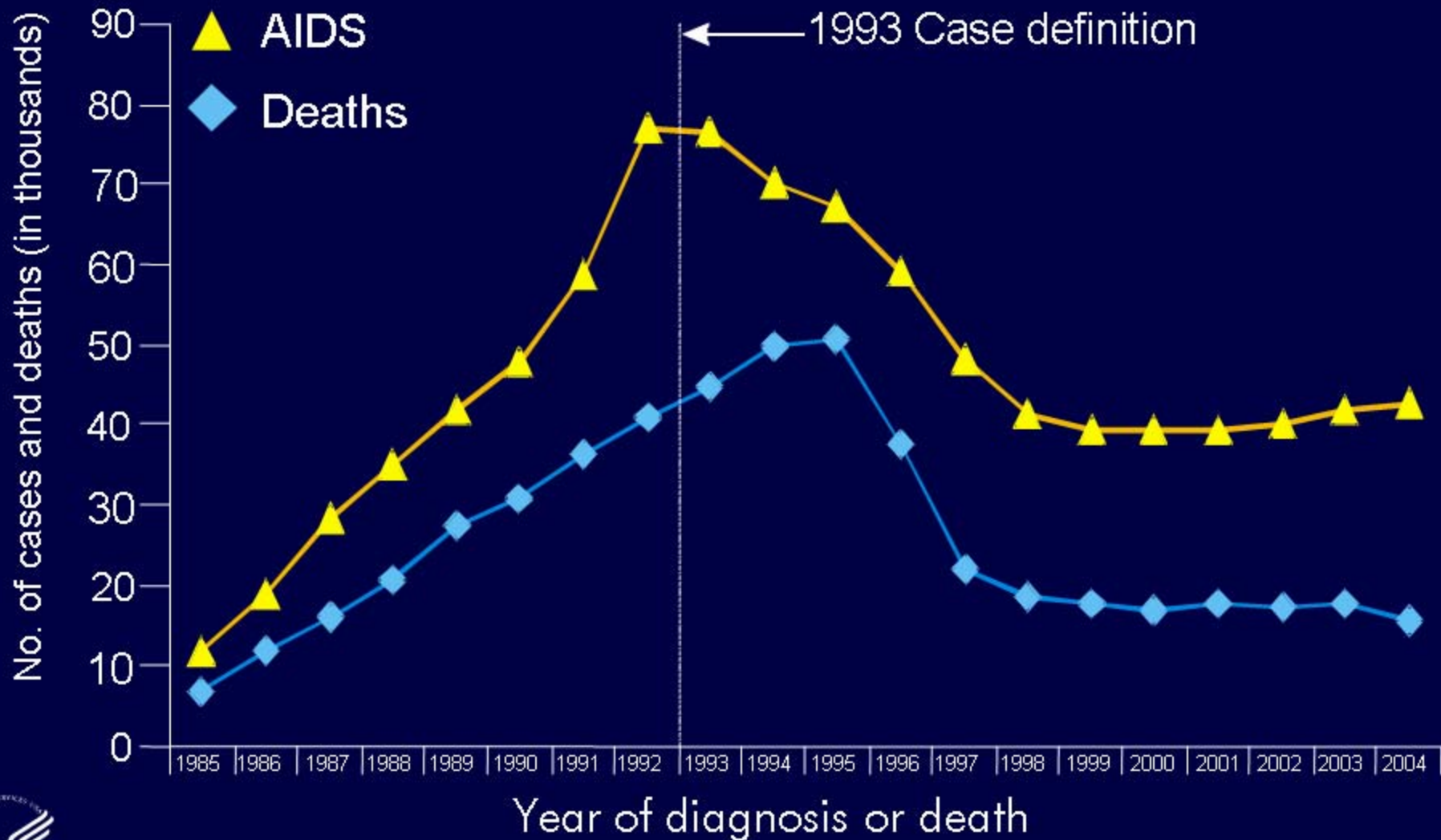


# National Context

# AIDS Rates, Reported in 2004—United States



# Estimated Number of AIDS Cases and Deaths among Adults and Adolescents with AIDS, 1985–2004—United States

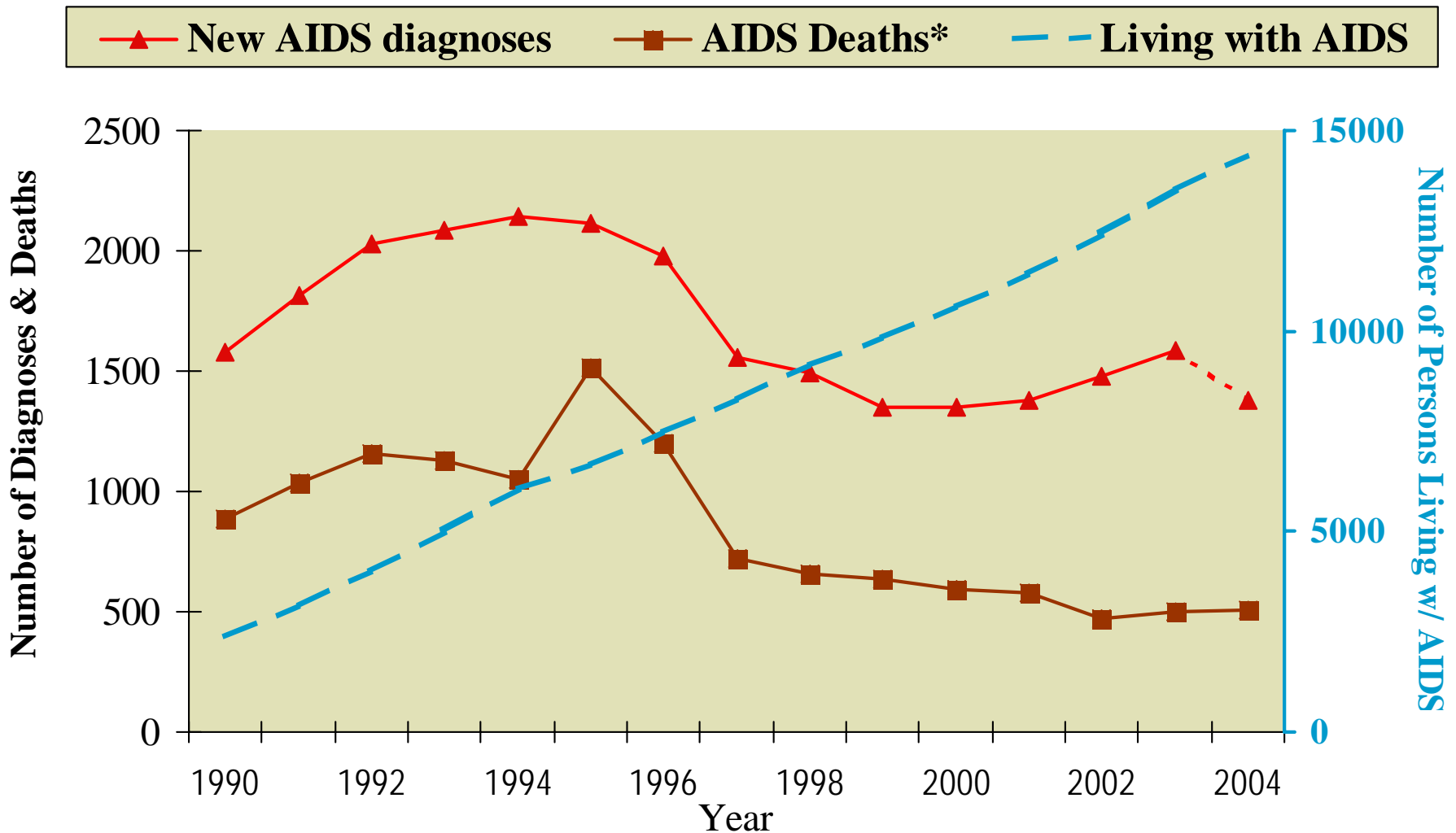


Note. Data adjusted for reporting delays.



# AIDS Epidemic in Georgia:

## New Diagnoses, PLWA, and Deaths by Year, 1990-2004

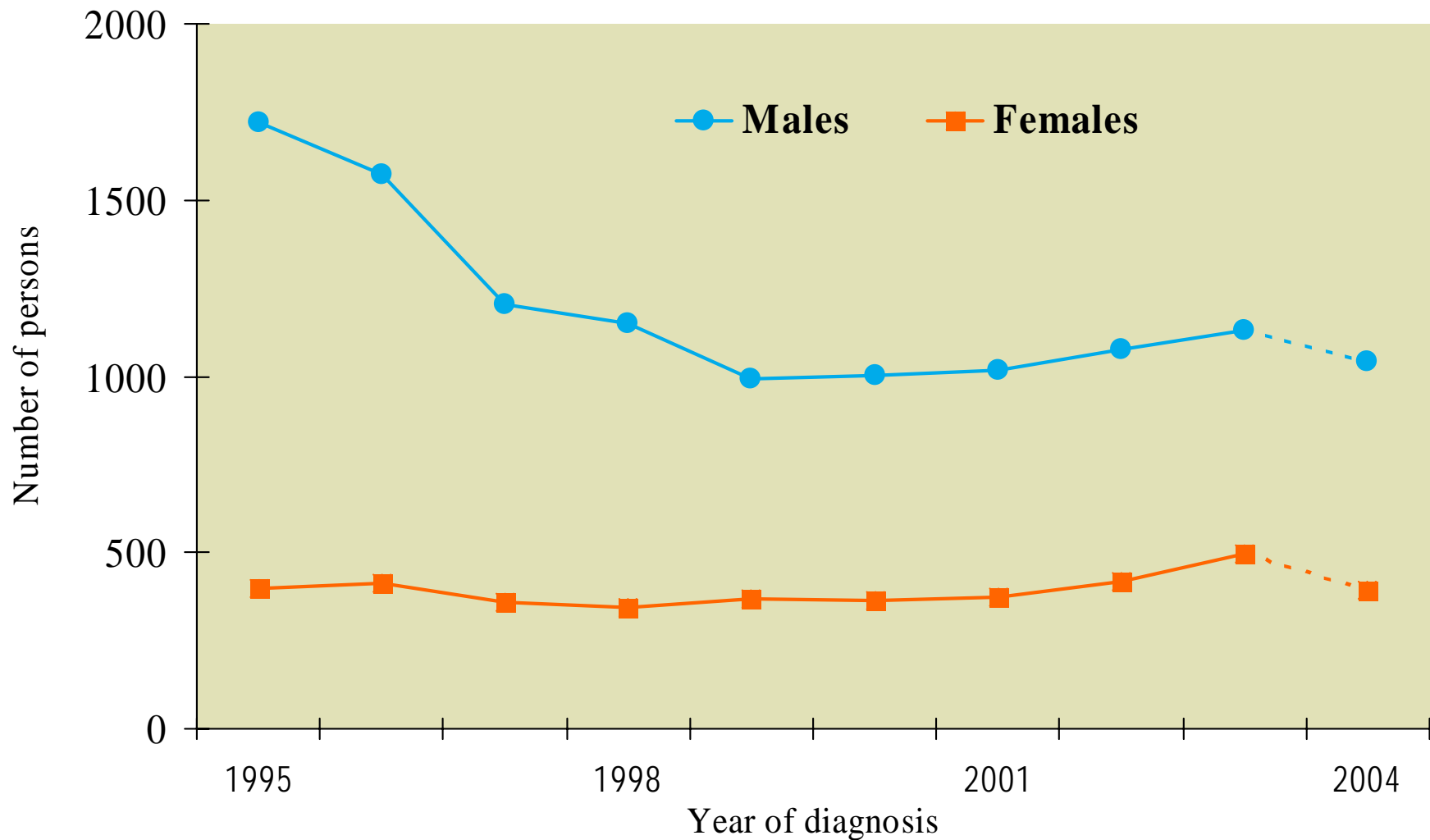


\*Deaths among AIDS cases regardless of cause.

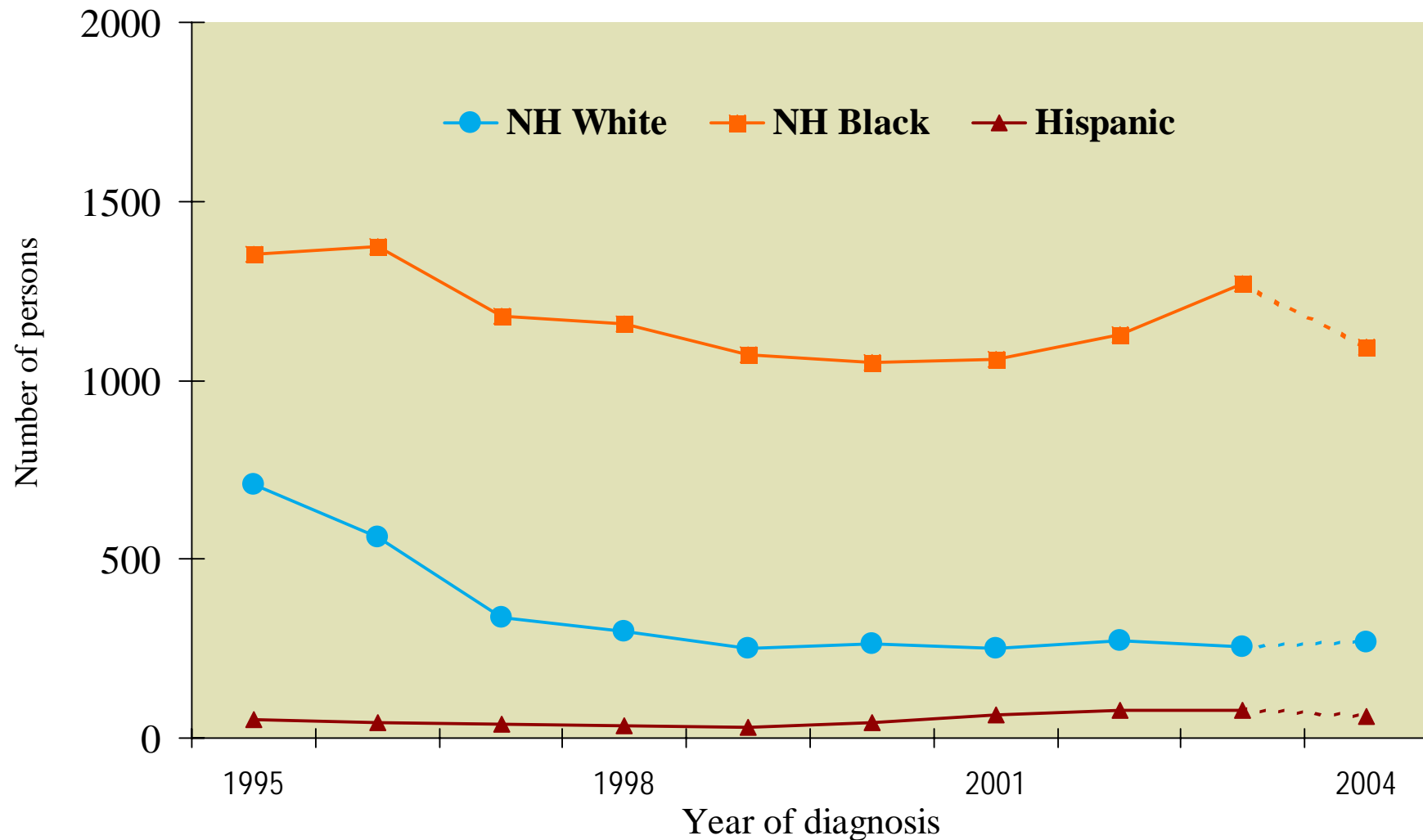


# Trends in New AIDS Diagnoses in Georgia, 1995-2004

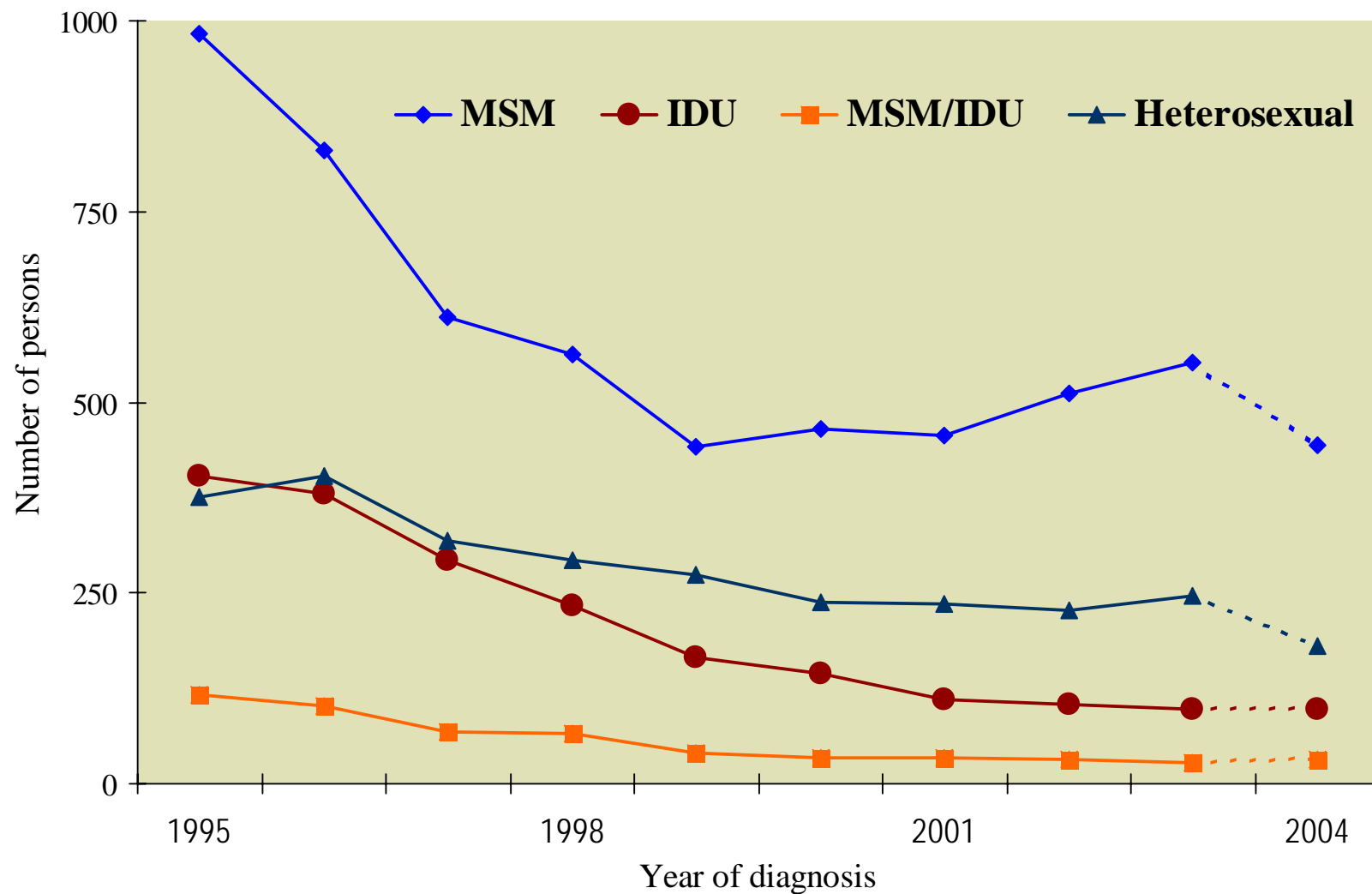
# New AIDS Diagnoses in Georgia by Gender, 1995-2004



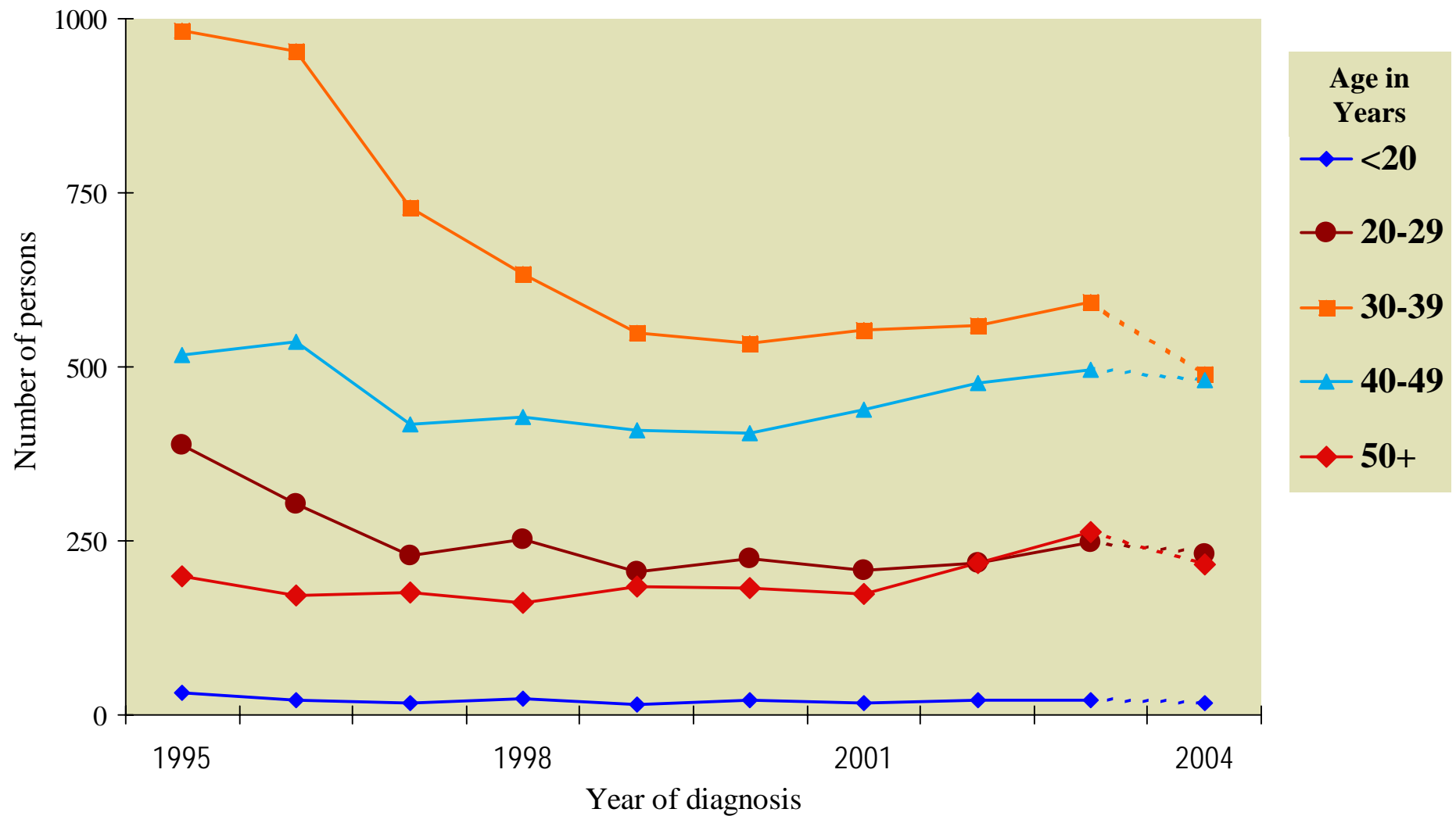
# New AIDS Diagnoses in Georgia by Race/Ethnicity, 1995-2004



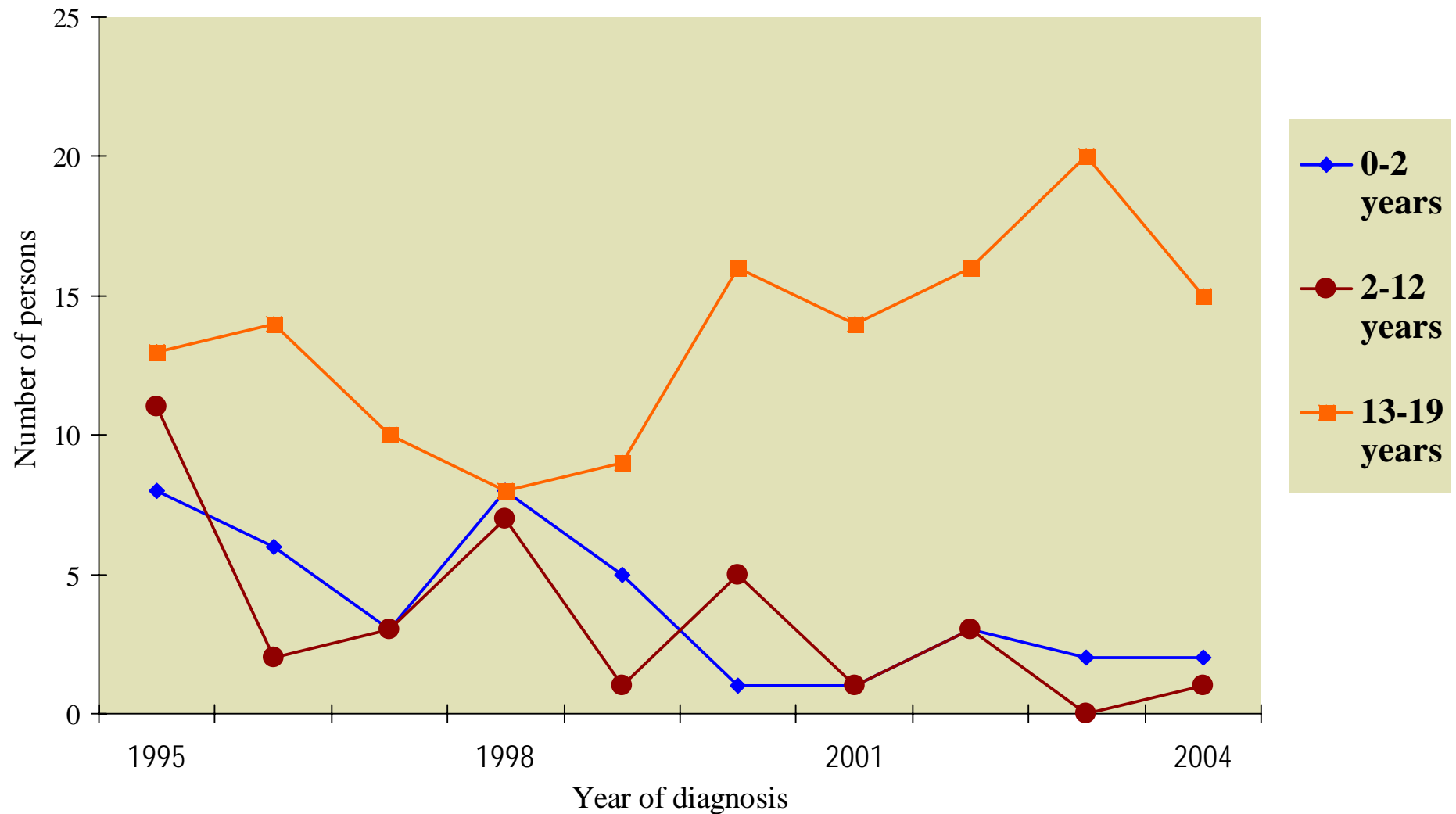
# New AIDS Diagnoses in Georgia by Mode of Exposure, 1995-2004



# New AIDS Diagnoses in Georgia by Age at Diagnosis, 1995-2004



# New AIDS Diagnoses in Georgia by Age at Diagnosis, 1995-2004



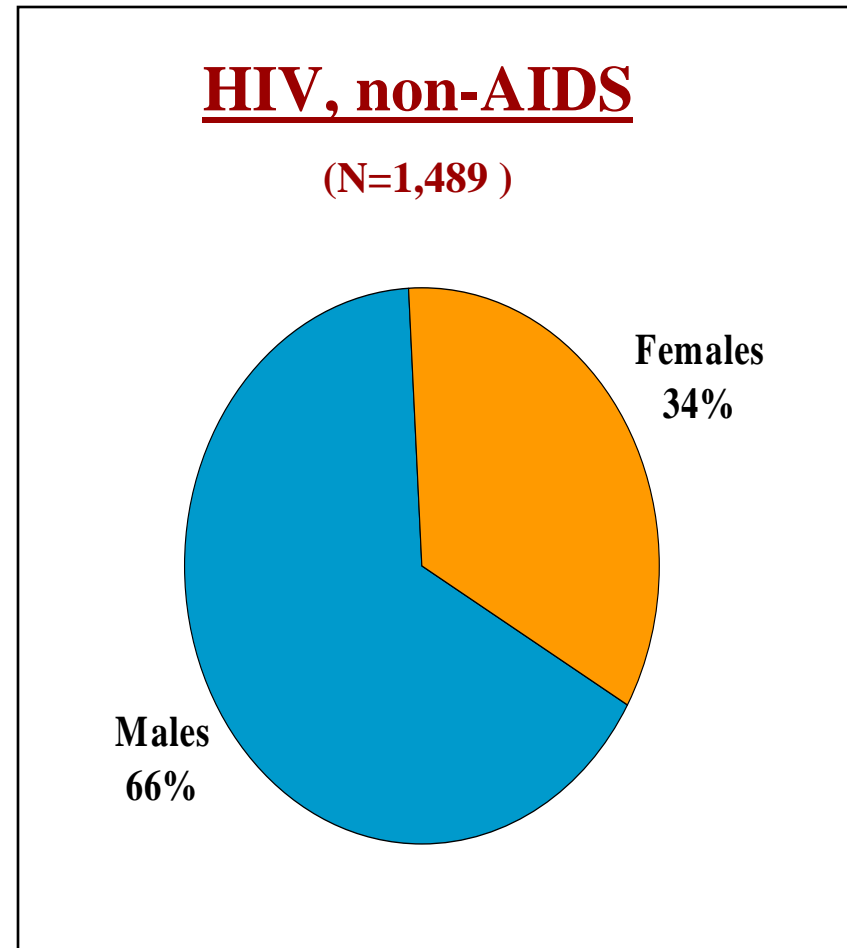
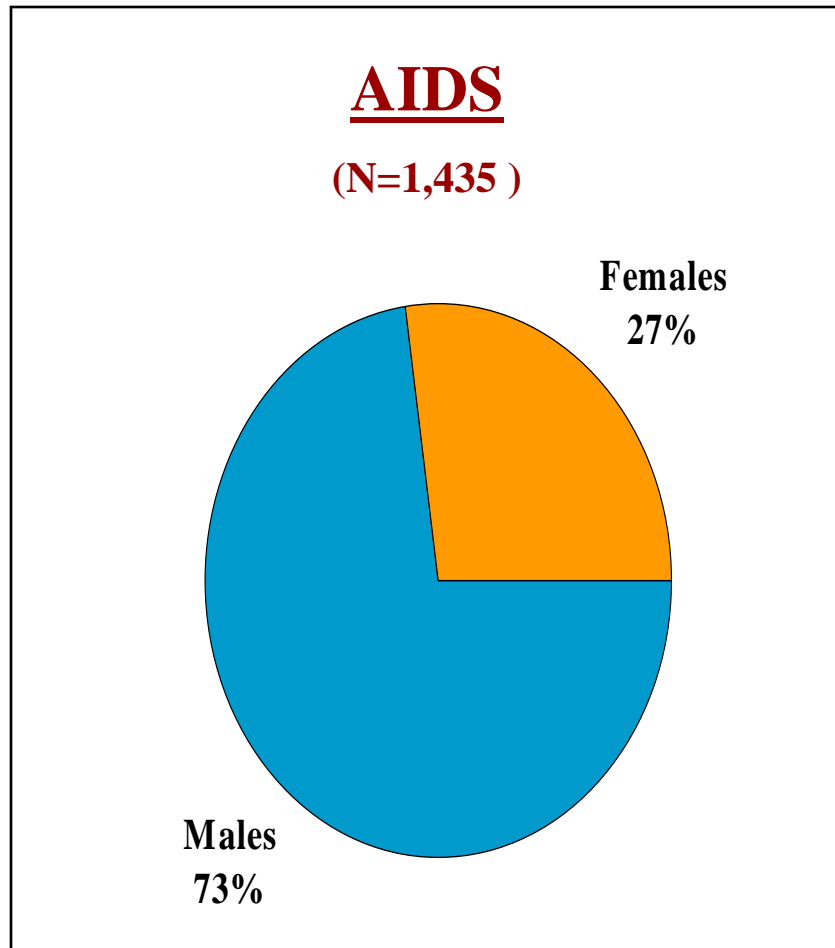


# Annual HIV & AIDS Diagnoses in Georgia, 2004

# New HIV/AIDS Diagnoses in Georgia

- In 2004,
  - 1,435 persons newly diagnosed with AIDS
  - 1,489 persons newly diagnosed with HIV, non-AIDS
- In 2005,
  - 855 persons newly diagnosed with AIDS
  - 940 persons newly diagnosed with HIV, non-AIDS

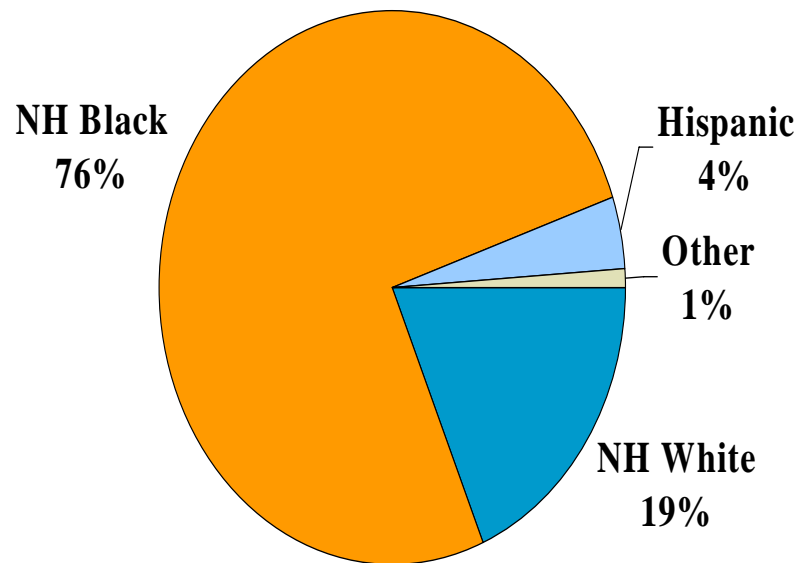
# Persons Newly Diagnosed with HIV/AIDS in Georgia by Gender, 2004



# Persons Newly Diagnosed with HIV/AIDS in Georgia by Race/Ethnicity, 2004

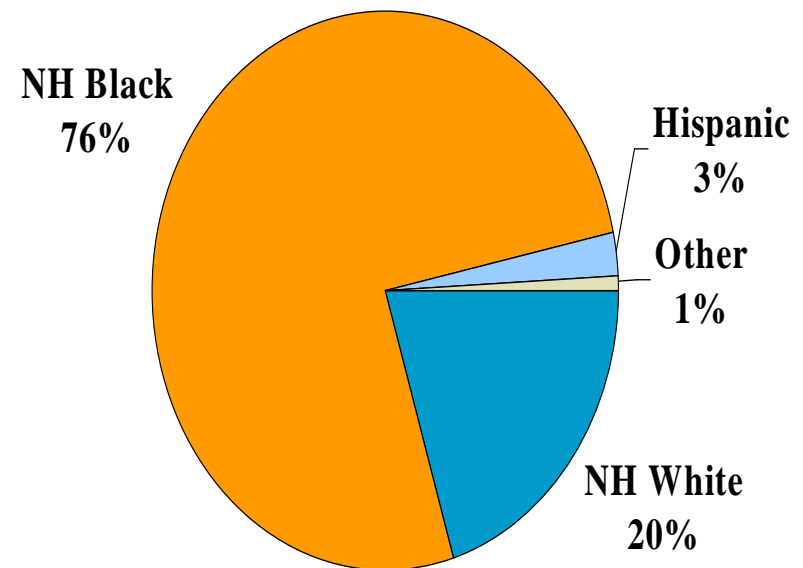
## AIDS

(N=1,435)

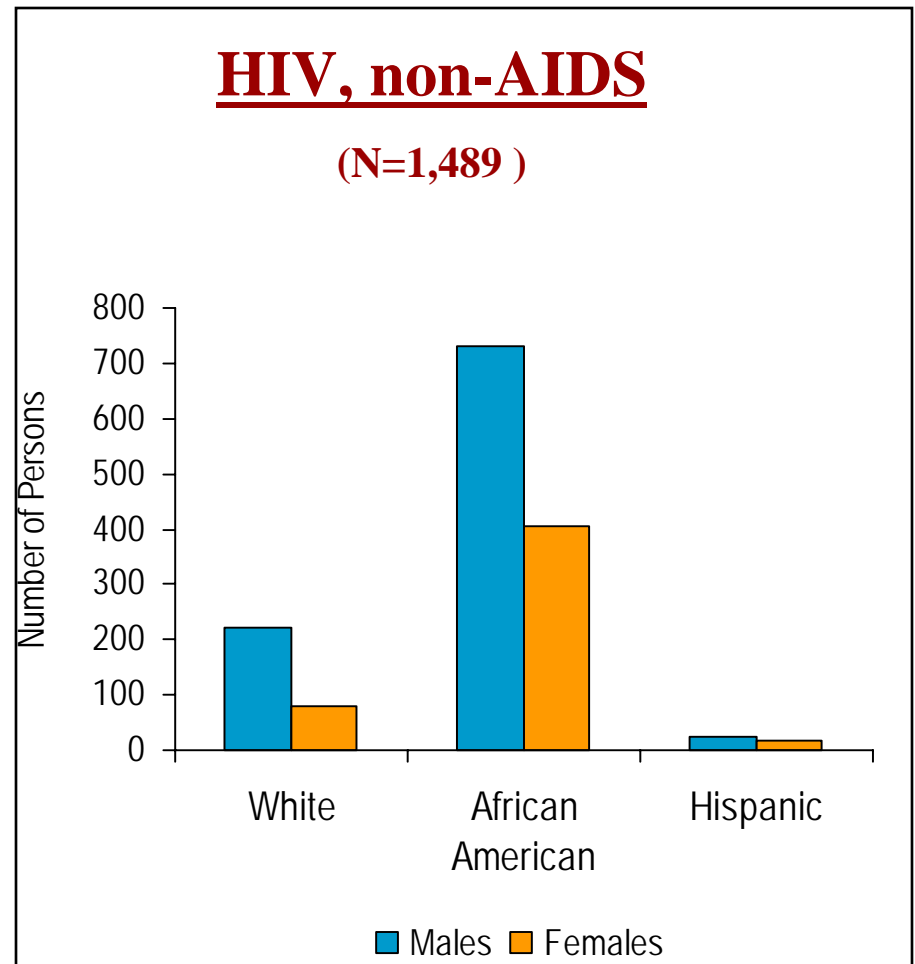
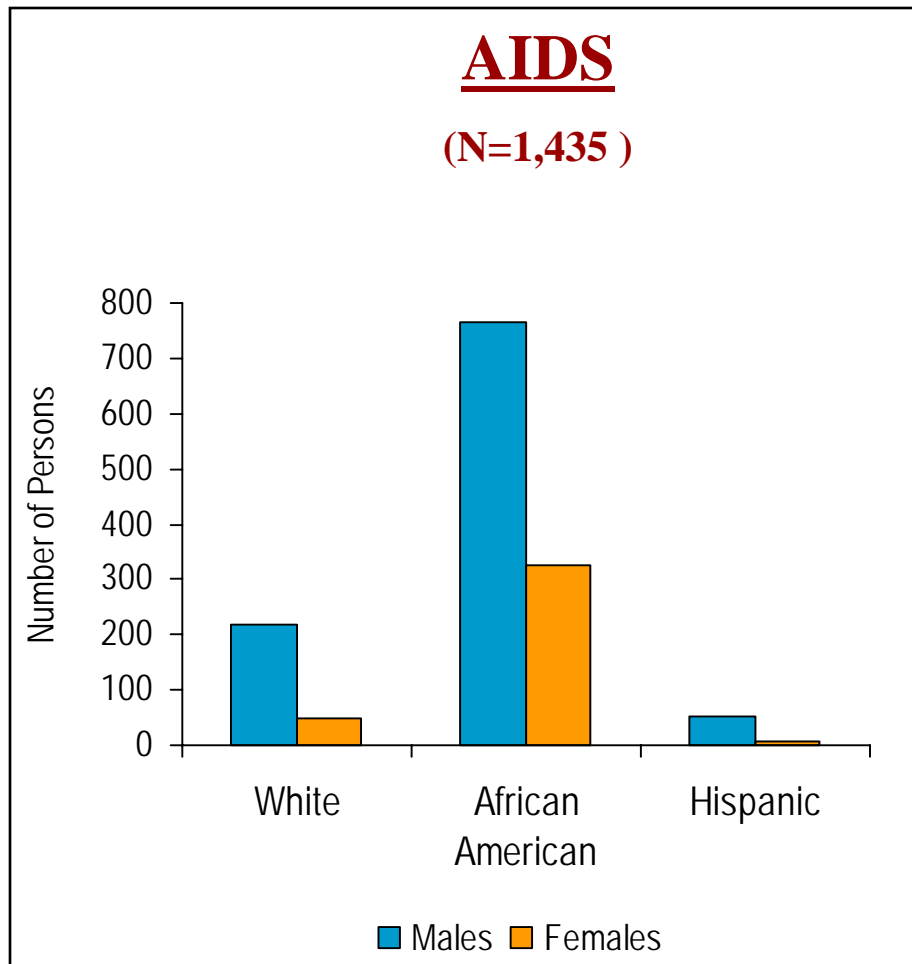


## HIV, non-AIDS

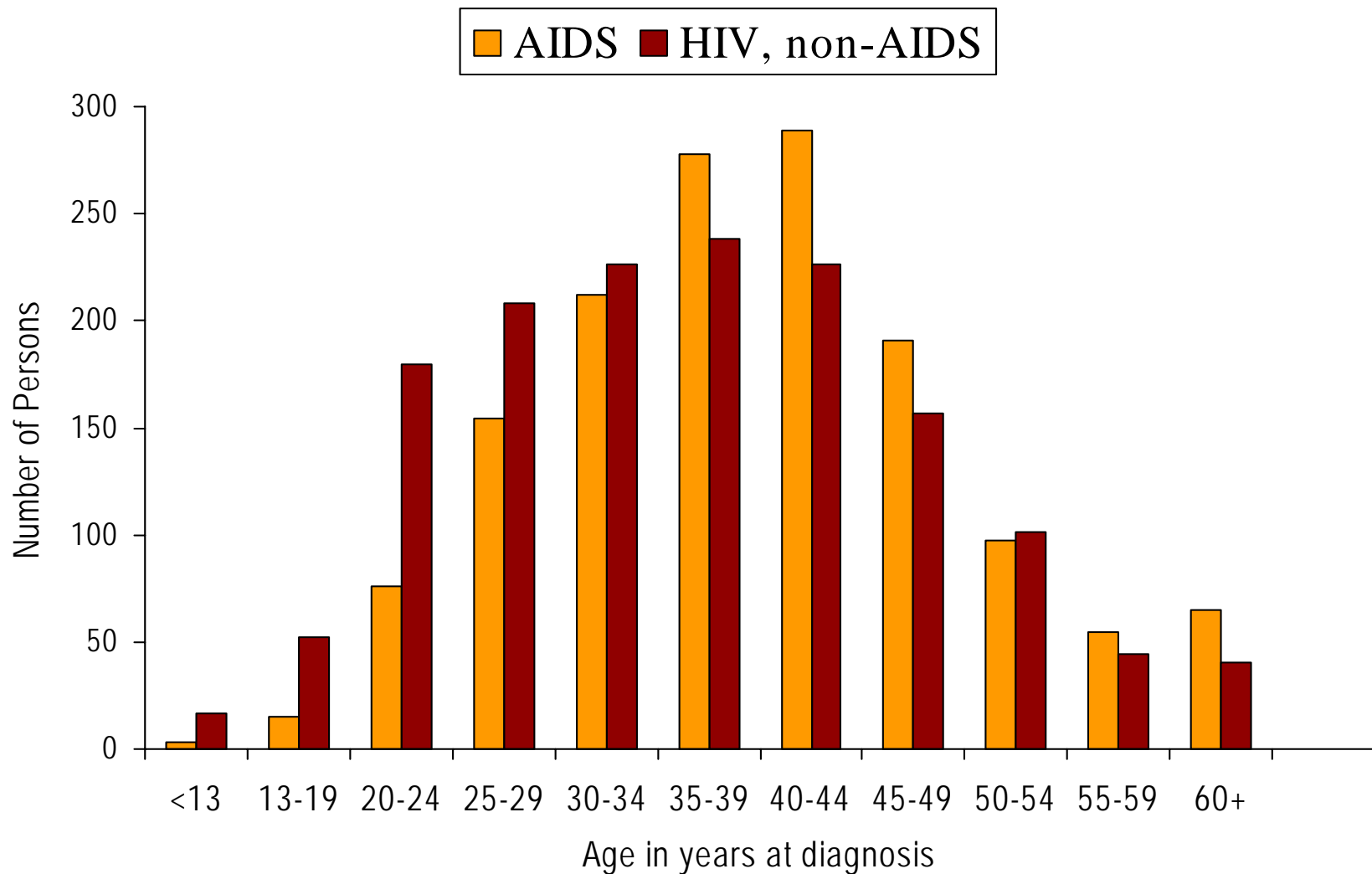
(N=1,489)



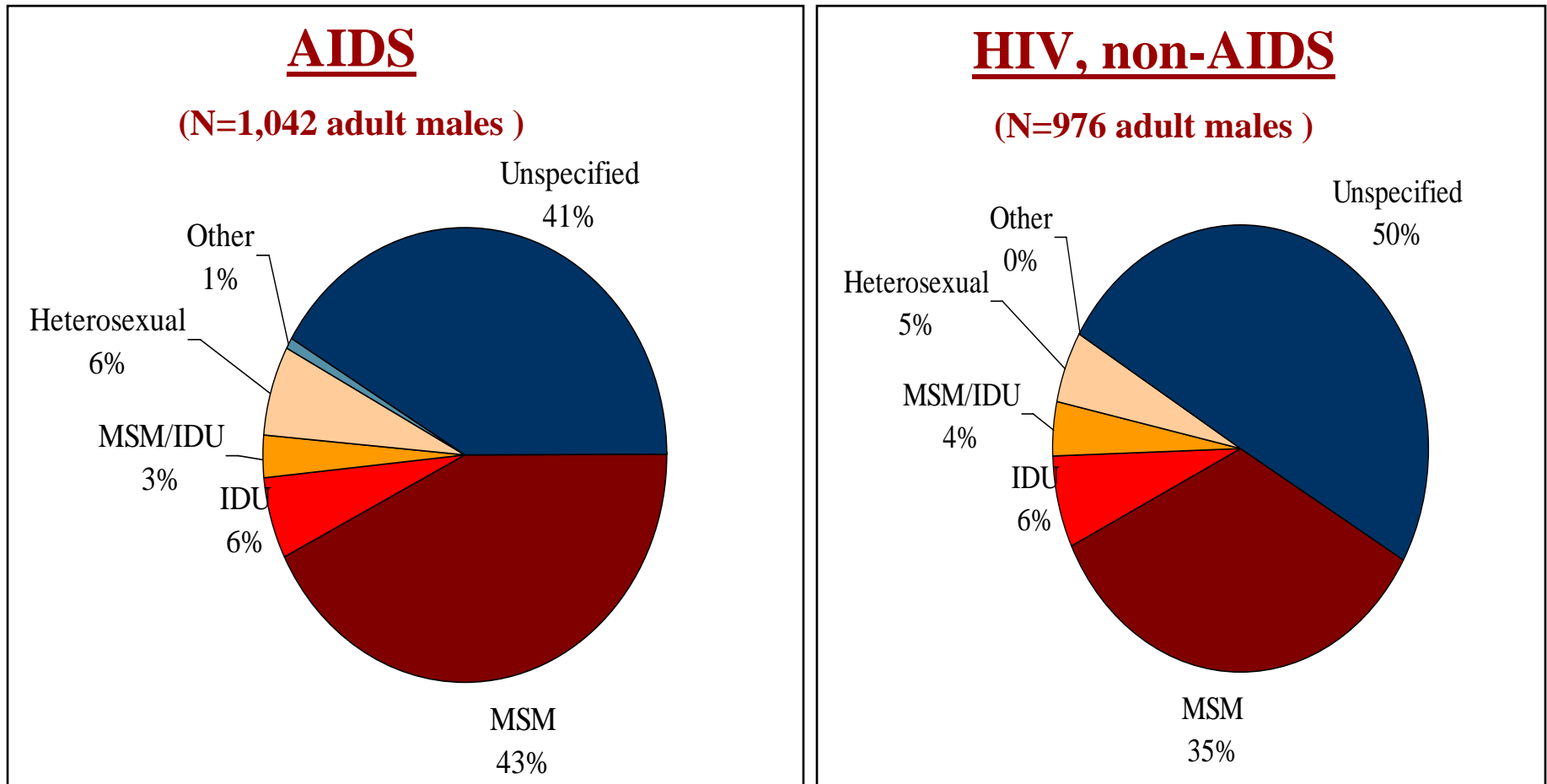
# New HIV/AIDS Diagnoses in Georgia by Gender and Race/Ethnicity, 2004



# Persons Newly Diagnosed with HIV/AIDS in Georgia by Age Group, 2005

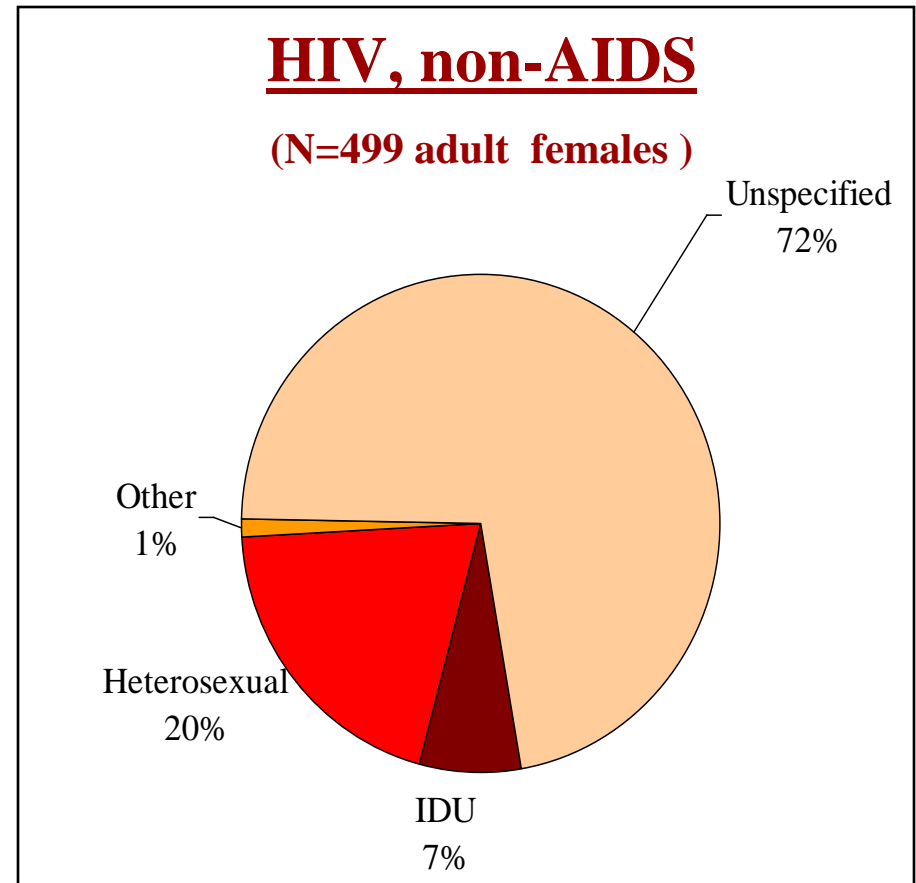
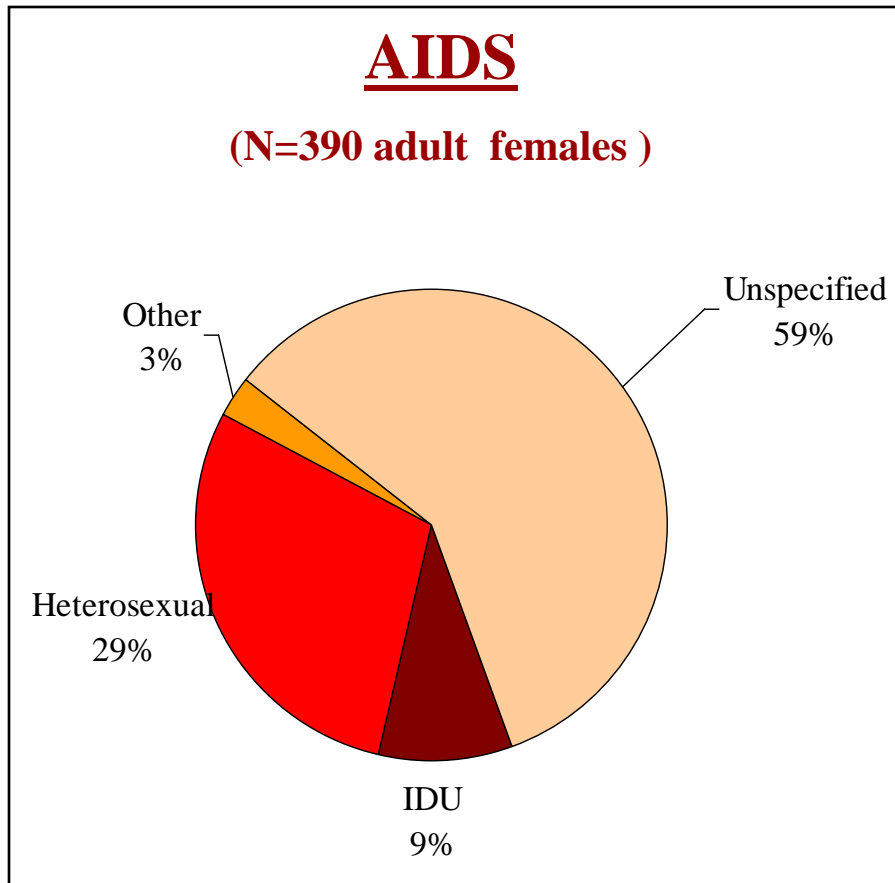


# Adult & Adolescent Males Newly Diagnosed with HIV/AIDS by Mode of Exposure, 2004

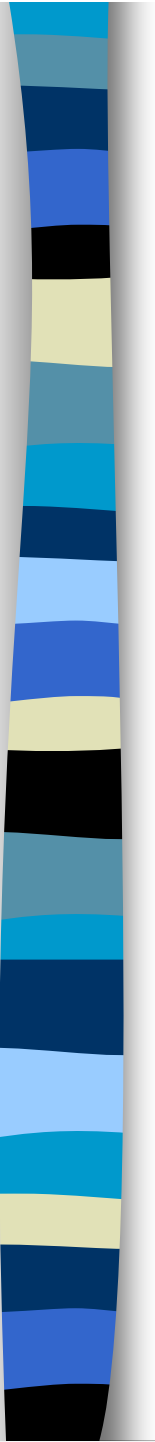


Other category includes hemophilia, blood transfusion, transplant, and perinatal risk

# Adult & Adolescent Females Newly Diagnosed with HIV/AIDS by Mode of Exposure, 2004



Other category includes hemophilia, blood transfusion, transplant, and perinatal risk



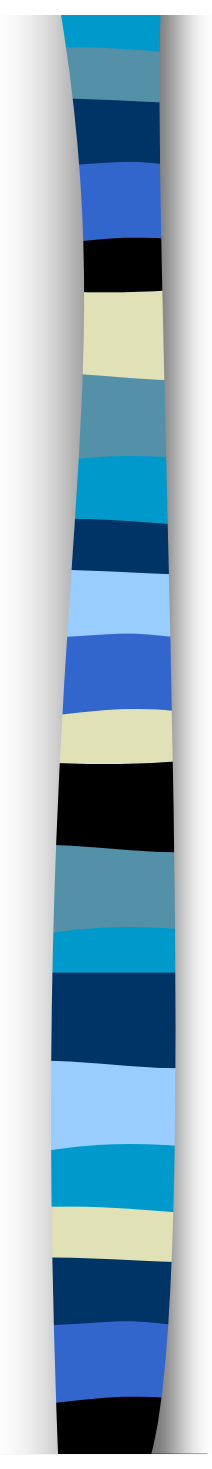
Survival among Persons Newly  
Diagnosed with AIDS in  
Georgia, 2000



## Survival in months among persons diagnosed with AIDS in 2000

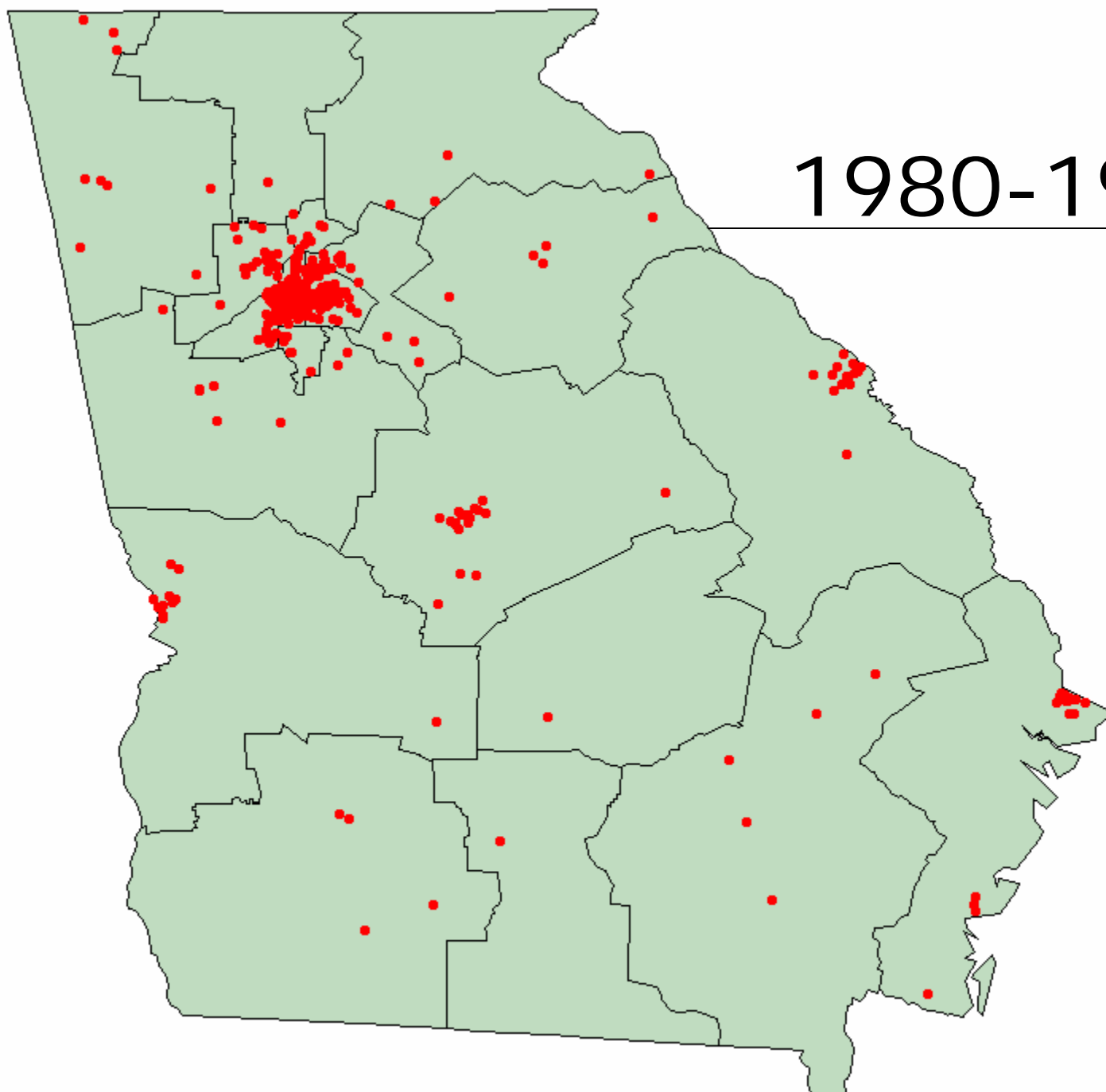
Number of persons diagnosed in 2000*	Number and percent of those who survived after...			
	> 12 months	> 24 months	> 36 months	> 60 months
1299	1154 (89%)	1091 (84%)	1042 (80%)	981 (76%)

*\*Excludes persons with missing death information and persons who were diagnosed and died in same calendar month (n=68).*

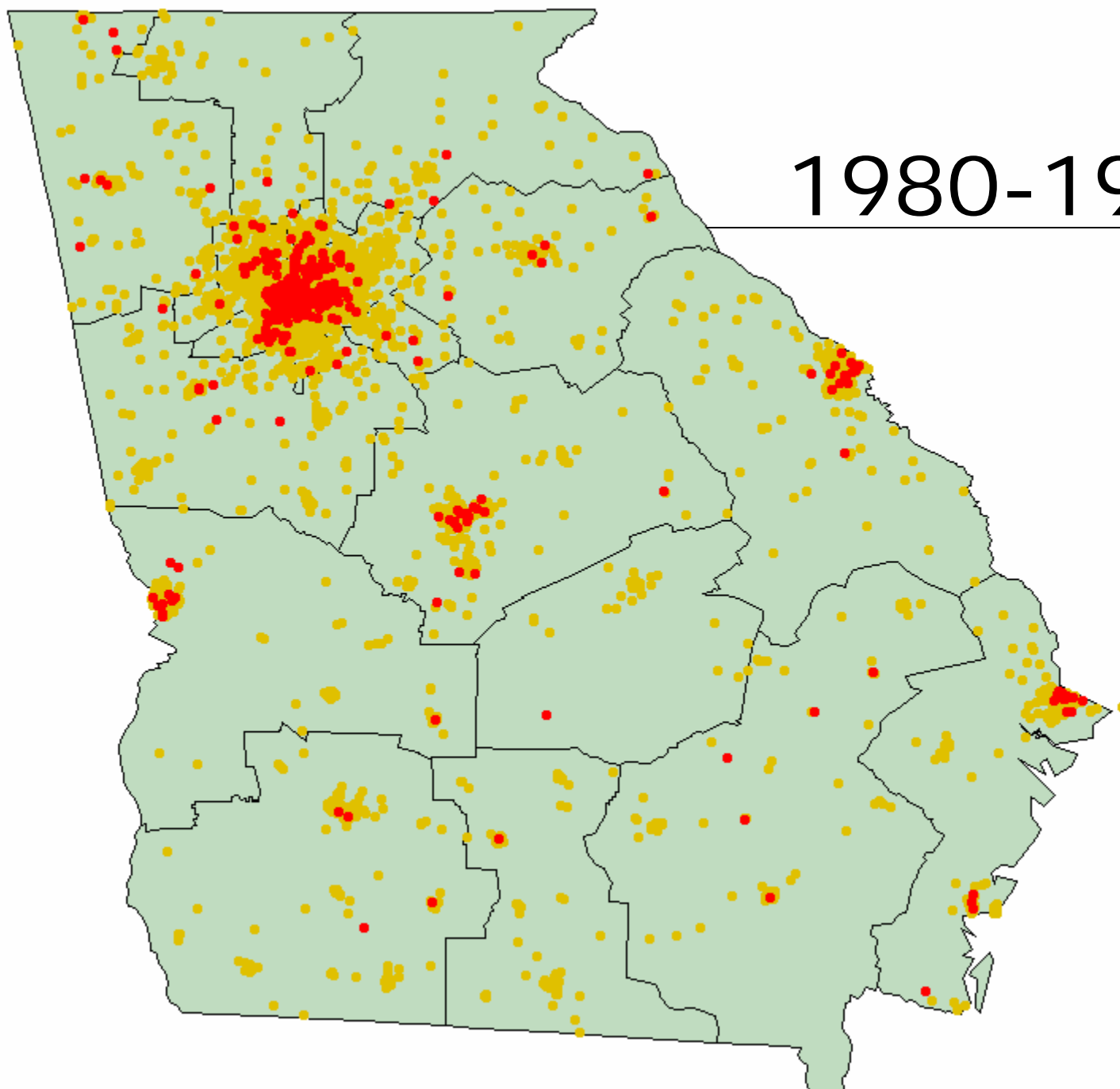


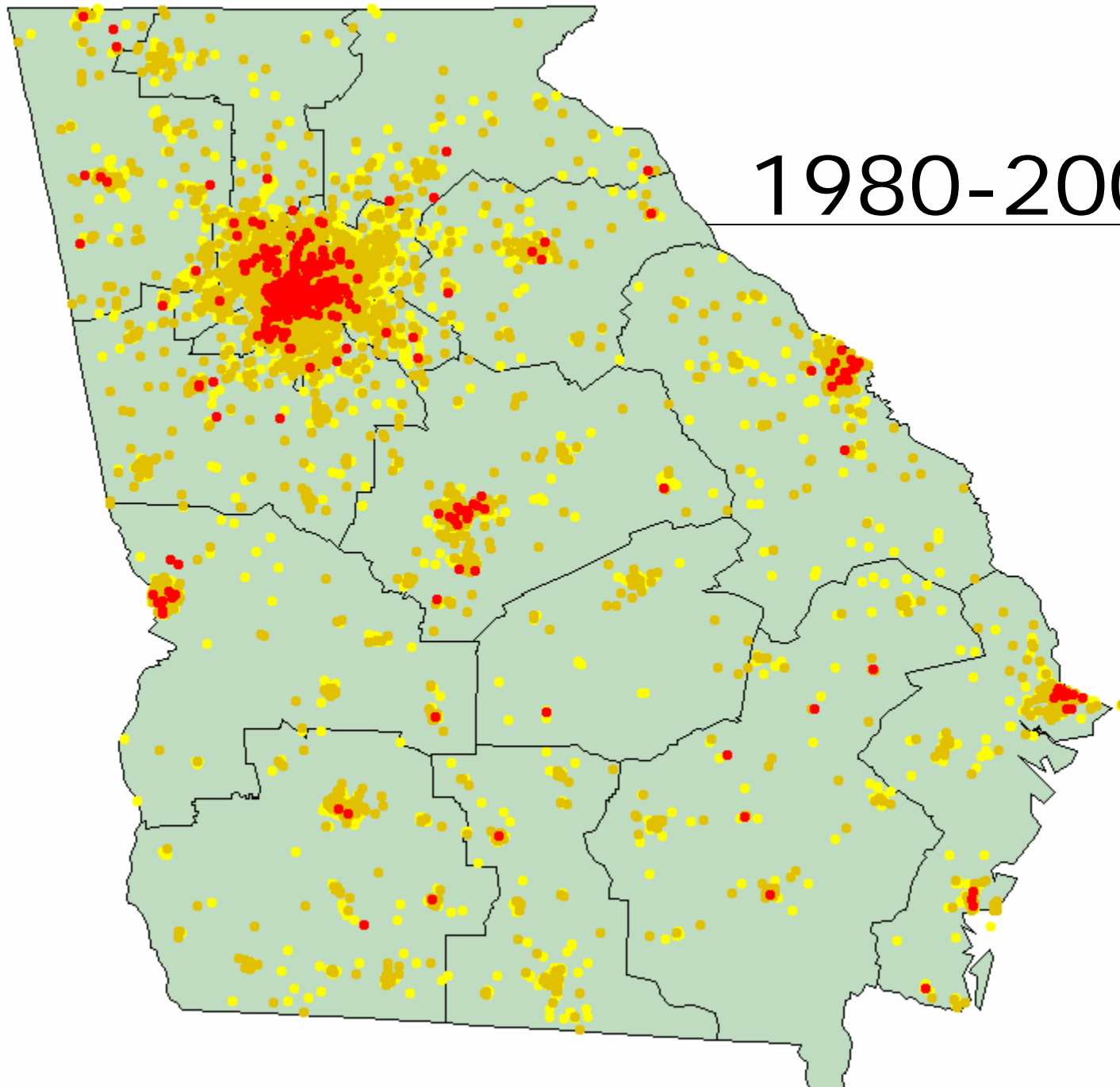
# Persons Living with AIDS in Georgia, 2005

1980-1989



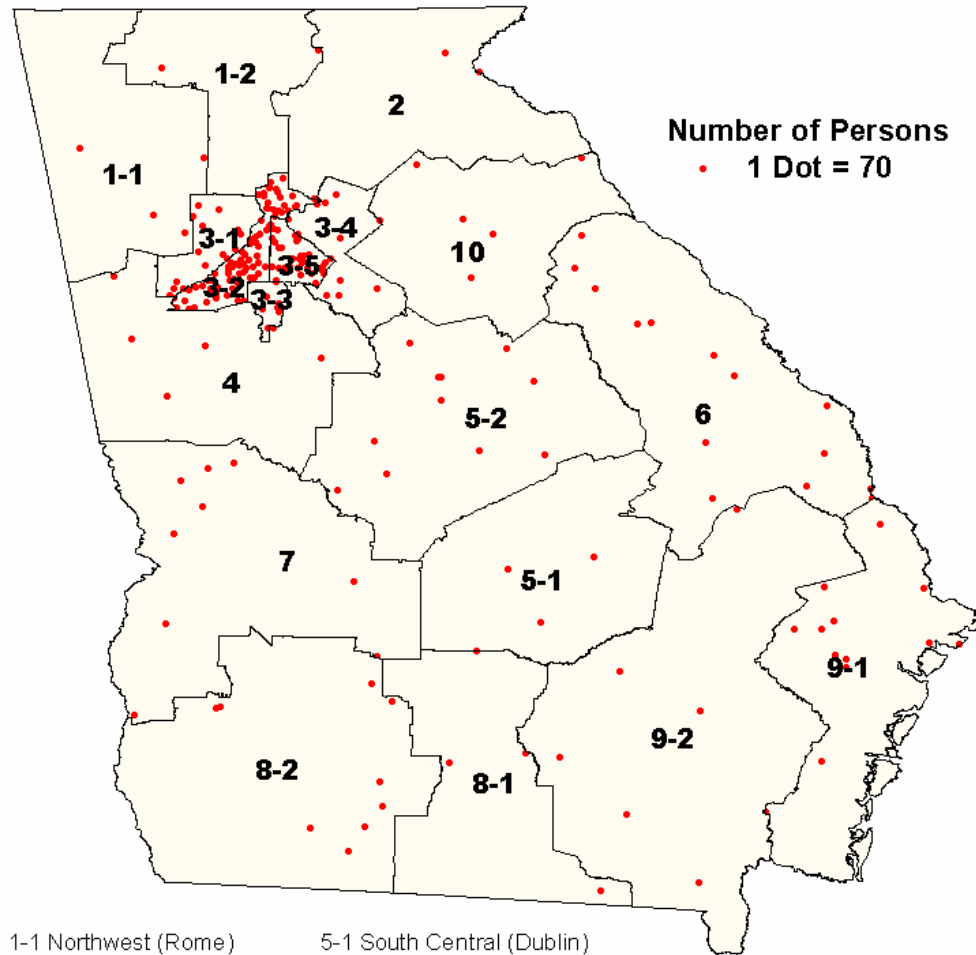
1980-1999





1980-2005

# Persons Living with AIDS by District



- |                               |                                  |
|-------------------------------|----------------------------------|
| 1-1 Northwest (Rome)          | 5-1 South Central (Dublin)       |
| 1-2 North Georgia (Dalton)    | 5-2 North Central (Macon)        |
| 2 North (Gainesville)         | 6 East Central (Augusta)         |
| 3-1 Cobb-Douglas              | 7 West Central (Columbus)        |
| 3-2 Fulton                    | 8-1 South (Valdosta)             |
| 3-3 Clayton (Morrow)          | 8-2 Southwest (Albany)           |
| 3-4 East Metro (Larenceville) | 9-1 Coastal (Savannah/Brunswick) |
| 3-5 DeKalb                    | 9-2 Southeast (Waycross)         |
| 4 LaGrange                    | 10 Northeast (Athens)            |

# Reported Prevalence of HIV & AIDS in Georgia, 2005

- 17,344 persons living with AIDS
- 7,479 persons living with HIV, non-AIDS



# Persons living with HIV (non-AIDS) Georgia, 2005

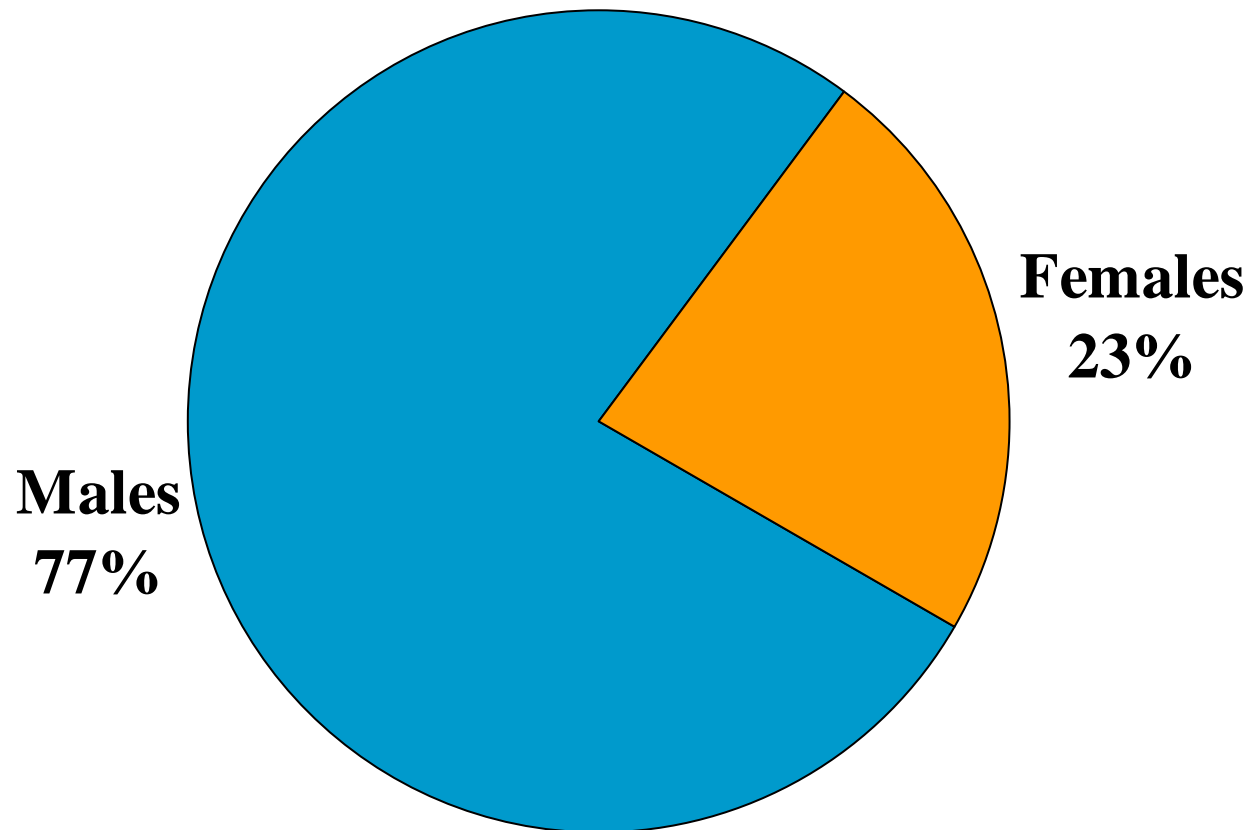
## ■ Estimated number

- Minimum: 15,088
- **Midpoint: 21,620**
- Maximum: 28,152

## ■ Surveillance number

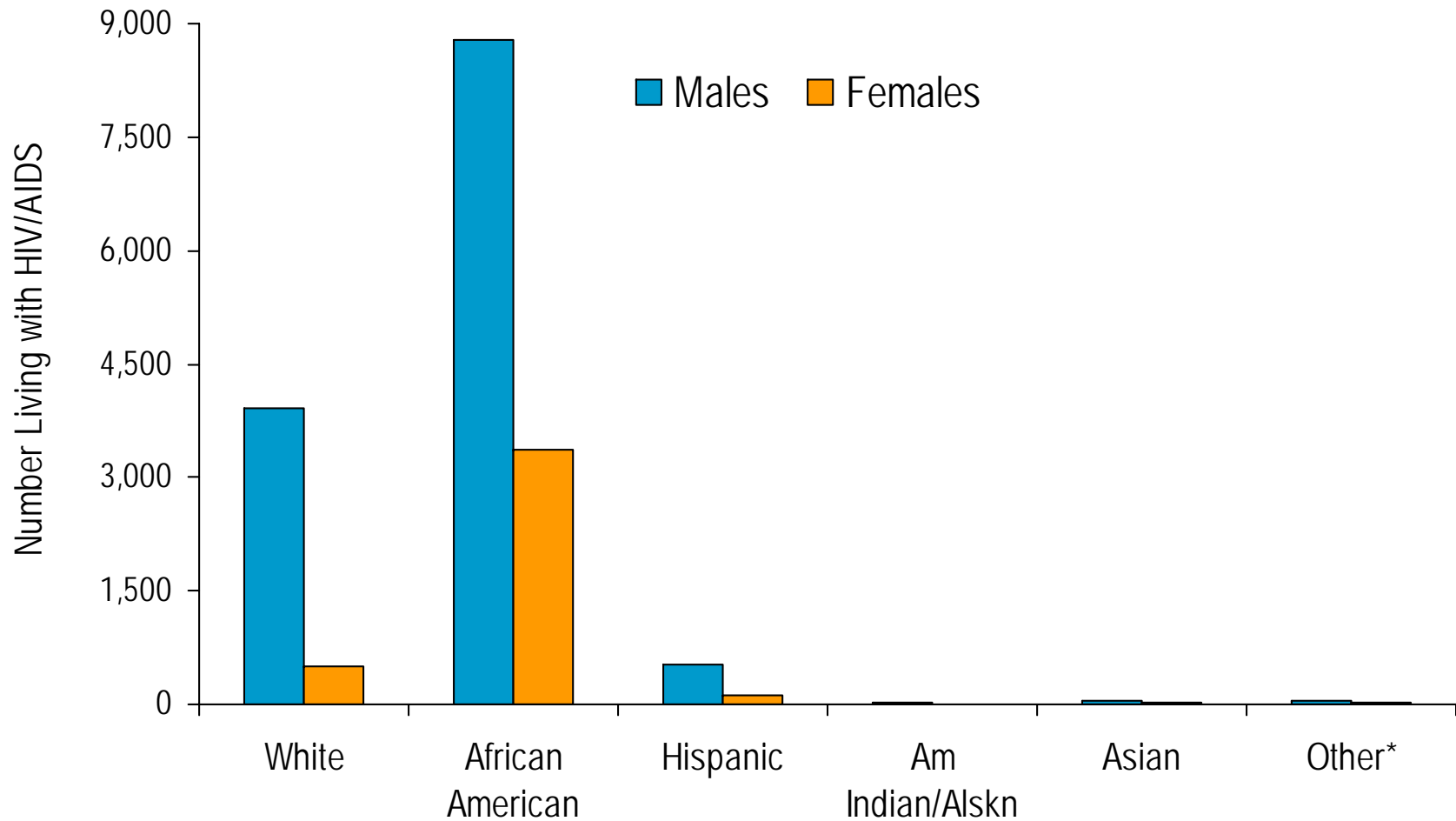
- One-third of estimated number
- Approximately 9,000 incomplete lab reports

# Persons Living with AIDS in Georgia by Gender, 2005



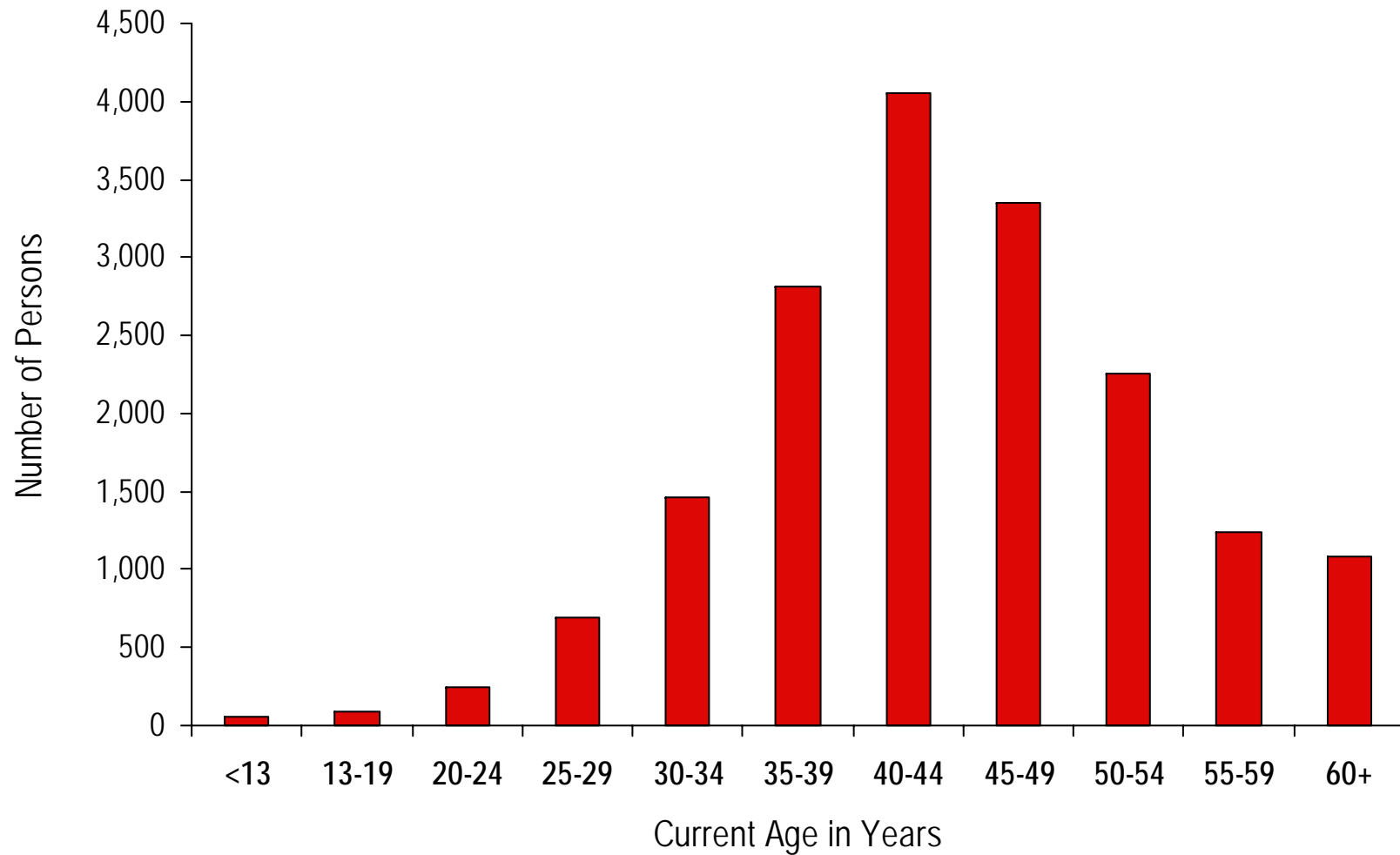
**Total of 17,344 PLWA in Georgia**

# Persons Living with AIDS in Georgia by Gender and Race/Ethnicity, 2005



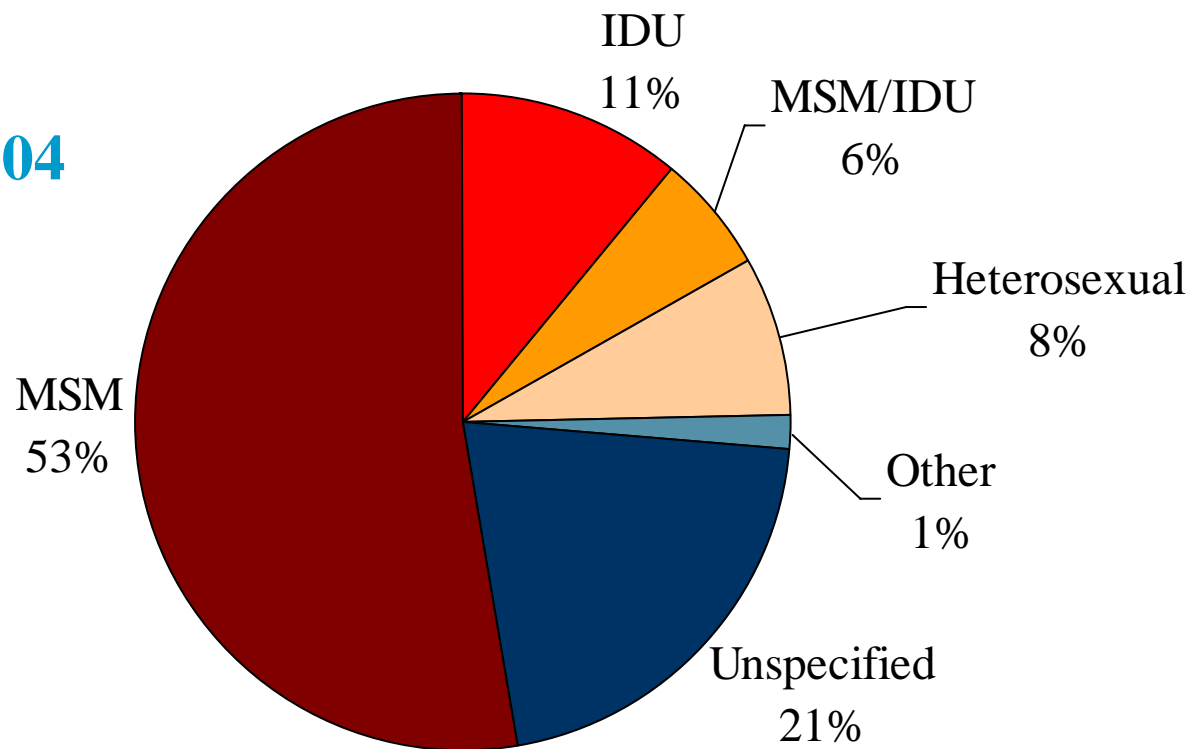
Other includes persons with unknown or multiple races

# Persons Living with AIDS in Georgia by Age Group, 2005



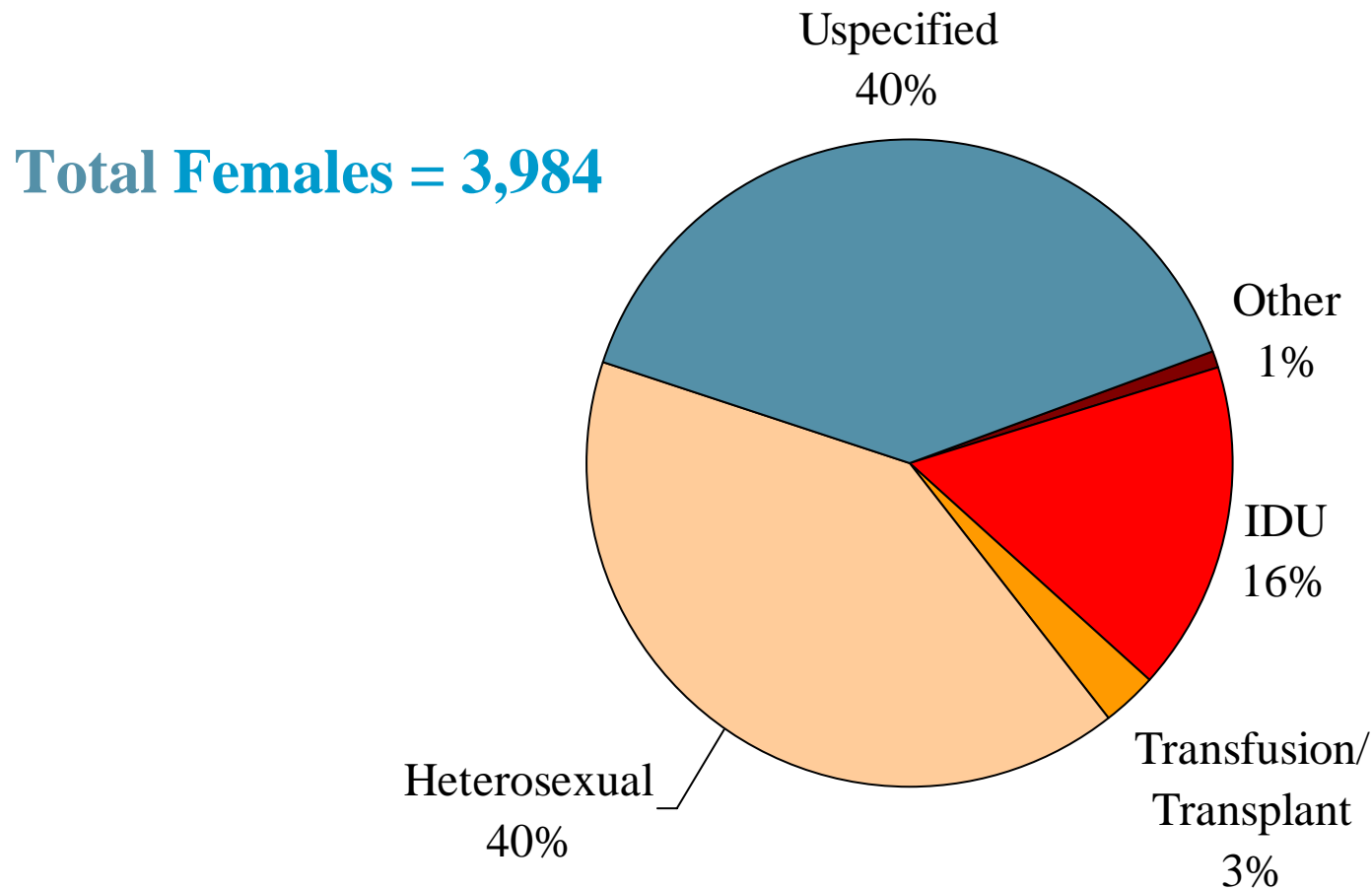
# Adult & Adolescent Males Living with AIDS by Mode of Exposure, 2005

Total Males = 13,304



Other category includes hemophilia, blood transfusion, transplant, perinatal, and pediatric risk

# Adult & Adolescent Females Living with AIDS by Mode of Exposure, 2005



Other includes mother with HIV or HIV risk and pediatric other/undetermined risk



# Summary



# Summary: Trends

- Overall increase in new AIDS diagnoses
  - 19% increase between 2000-2003
  - Continue to monitor 2004-2005
- Increase in new AIDS diagnoses among:
  - Males, Females
  - African Americans, Hispanics
  - 40-49 year olds, 50+ year olds
  - MSM
- Decrease in new AIDS diagnoses among:
  - <13 year olds
  - IDU



# Summary: New Diagnoses

- Approximately 1,400 new AIDS diagnoses per year
- Approximately 1,400 new HIV, non-AIDS diagnoses per year



# Summary: New HIV Diagnoses

- Compared with new AIDS diagnoses:
  - More females
  - Younger age groups
  - Similar distribution of cases by race/ethnicity and mode of exposure



# Summary: HIV/AIDS Prevalence

- 17,344 persons living with AIDS in GA
- 7,479 persons living with HIV, non-AIDS
- Majority reside in metro area, but entire state impacted



# Summary: AIDS Prevalence

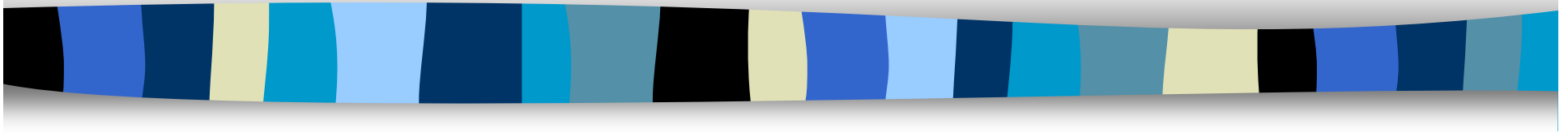
- Majority of PLWA  $\geq$  40 years of age
  - 40-49 years old (42%)
  - 30-39 years old (24%)
  - 50-59 years old (20%)
- Male-to-male sexual contact is the most commonly reported risk (40%)
  - Heterosexual risk (15%)
  - IV drug use (12%)
  - Unspecified risk (25%)



# Uses of Data

- Funding
- HIV/AIDS Prevention & Care
- Community Based Organizations
- Education of public

# Questions & Contact Information



## HIV/AIDS Surveillance

Epidemiology Branch, Division of Public Health

**Phone: 404-657-2588**

**Email: [hivepi@dhr.state.ga.us](mailto:hivepi@dhr.state.ga.us)**