

2007 Georgia Program Summary:

Georgia Behavioral Risk Factor Surveillance System (BRFSS)



The Behavioral Risk Factor Surveillance System (BRFSS) is a system of telephone surveys that gathers information about chronic conditions, risk behaviors and preventive practices. BRFSS is the largest telephone-based surveillance system in the world. Georgia has collected this data since 1984.

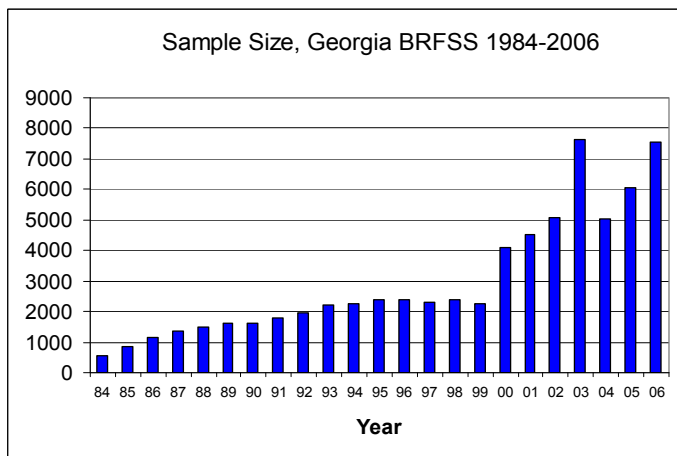
QUESTIONNAIRE TOPICS*

Chronic Conditions	Risk Factors	Preventive Practices
<ul style="list-style-type: none">ObesityDiabetesHigh blood pressureDisabilityAsthmaHeart diseaseArthritis	<ul style="list-style-type: none">Cigarette smokingBinge drinkingNo physical activityEating too few fruits and vegetablesFrequent mental distressNo health insuranceLoaded, unlocked firearms in the home	<ul style="list-style-type: none">MammogramPap testFlu and pneumonia shotsProstate cancer screeningColorectal cancer screeningHIV testingCholesterol screening

* list is not exhaustive

BRFSS GROWTH

- 1984 completed interviews = 560
- 2006 completed interviews = 7,560



WHY IS BRFSS IMPORTANT?

- Provides behavioral data for state and district health program planning
- Highlights differences/disparities between demographic groups
- Displays the size of a health problem
- Allows comparisons to other states and to national health objectives
- Identifies emerging health problems

RECENT UPDATES TO THE SYSTEM

- Pre-notification letters are sent to potential respondents before interview attempt
- Sub-state BRFSS results are available for the first time on the web <http://167.193.156.131:7168/oasis/brfss/qryBRFSS.aspx>
- Collaborations with partners continue such as Epilepsy Foundation, Prevent Blindness Georgia
- Public health district stratification began in 2000 to produce more localized estimates



THE STATE OF GEORGIA'S HEALTH 2006

- Mammogram, Within Past Two Years (Women, Ages ≥ 40 years) : **79%** ☹️
 - **Target : ≥ 70% Healthy People 2010 Objective**
- Sigmoidoscopy, Ever Had (Ages ≥ 50 years) : **57%** ☹️
 - **Target : ≥ 50% Healthy People 2010 Objective**
- Adults ages 65+ receiving influenza immunization:
 - **Ranked 43 out of 53***
- Adults ages 65+ receiving pneumonia vaccination:
 - **Ranked 42 out of 53***
- Obese adults:
 - **Ranked 12 out of 53***
- Men 40+ who have had a prostate cancer test (Prostate-Specific Antigen or PSA) within the past 2 years (2004):
 - **Ranked 7 out of 53*** ☹️

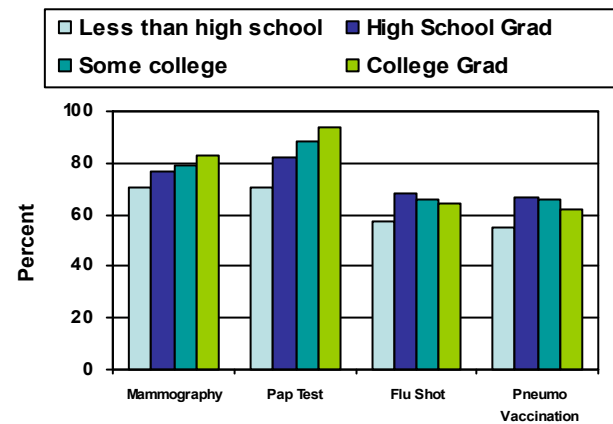
*50 States + District of Columbia + territories = 53; where 1=best and 53=worst

SAMPLE PUBLICATIONS USING GEORGIA BRSS

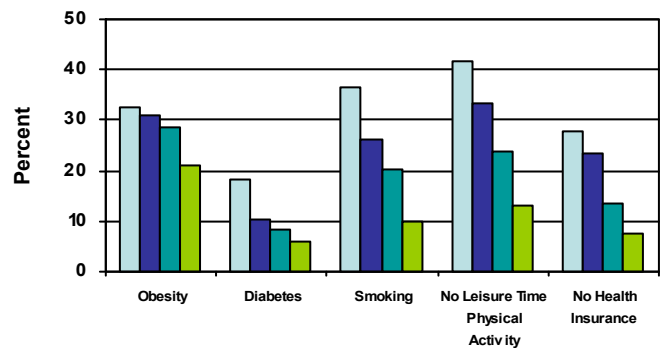
- Places to Walk: Convenience and Regular Physical Activity. *American Journal of Public Health*, 2003 Sep;93(9): 1519-21.
- Prevalence of epilepsy and health status of adults with epilepsy in Georgia and Tennessee: Behavioral Risk Factor Surveillance System, 2002. *Epilepsy & Behavior*. 2004 Jun;5(3):358-366.
- Validity and Reliability of Self-Reported Arthritis: Georgia Senior Centers, 2000-2001. *American Journal of Preventive Medicine* 2005 Apr;28(3):251-258.
- Overweight and Obese Adults in Georgia: Prevalence, Weight Control Practices, and Advice from Health Professionals. *Journal of the Medical Association of Georgia* 2001 Oct:26-29.

USING DATA TO HIGHLIGHT DIFFERENCES

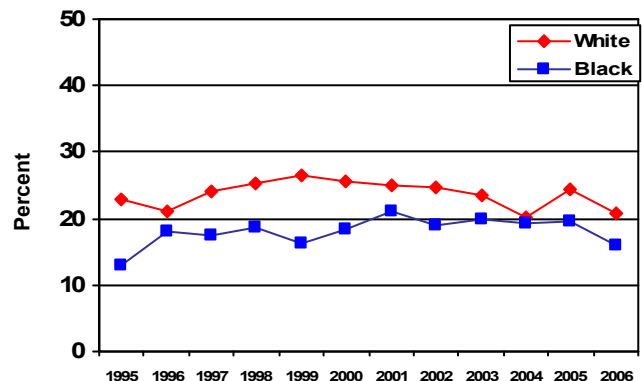
Prevalence of Selected Positive Behavioral Factors by Education Level, Georgia, 2006



Prevalence of Selected Negative Behavioral Risk Factors by Education Level, Georgia, 2006



Prevalence of Cigarette Smoking by Race, Georgia 1995 - 2006



“Surveillance is the collection of data for public health action”
 - Principles and Practice of Public Health Surveillance

Date created: July 2007

Publication Number: DPH07/113HW

Visit: <http://www.health.state.ga.us/epi/brfss/publications.asp> or

<http://www.health.state.ga.us/publications/reports.asp> to view annual Georgia BRSS reports.